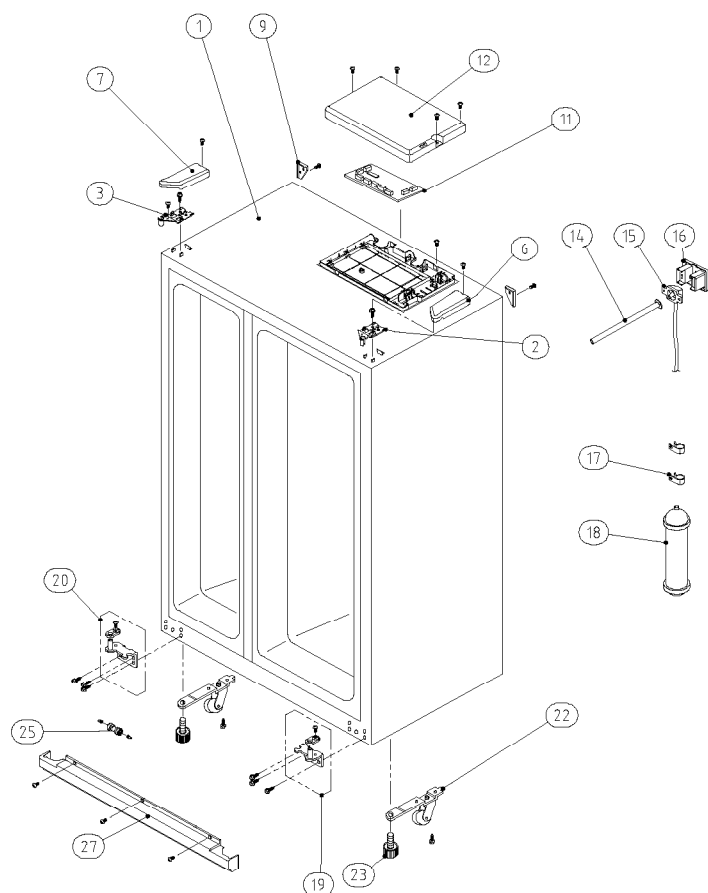


Cabinet

FRS-U20.. : R-134a Models

FRN-U20.. : R-600a Models

FRN-U20..I : R-600a + Inveter compressor Models



NO	PART-CODE	PART NAME	SPEC.	Q'ty		
				FRS-U20..	FRN-U20..	FRN-U20..I
1		ASSY CAB URT		1	1	1
2	3012924400	HINGE *T *R AS	PO T3.0+PAINT	1	1	1
3	3012924300	HINGE *T *L AS	PO T3.0+PAINT	1	1	1
6	3011446200	COVER *T HI *R	PP	1	1	x
	3011446220		PP(BLACK)	x	x	1
7	3011446100	COVER *T HI *L	PP	1	1	x
	3011446120		PP(BLACK)	x	x	1
9	3010968400	CAP CAB COVER	PP	2	2	2
11	30143H3100	PCB MAIN AS	FRU-54A,C,D,K,M---C (R134A)	1	x	x
	30143H3110		FRU-54A,C,D,K,M---N (R600A)	x	1	x
	30143G3060		FRN-U20DFVI (INVERTER)	x	x	1
12	3011446001	COVER MAIN PCB BOX	PP(V-235)	1	1	x
	3011446060		PP(V-235,BLACK)	x	x	1
14	3013224800	HOSE I/MAKER TUBE AS	FRU-541D	1	1	1
15	3012530210	GUIDE CAB W/TUBE A AS	FRU-541D	1	1	1
16	3011444100	COVER GUIDE CAB W/T A	HIPS	1	1	1
17	3011202000	CLAMP WATER TUBE A	PA-66, 5N	2	2	2
18	3019974800	S/PAER FILTER WATER AS	FR-S660CW	1	1	1
19	3012924003	HINGE *U *R AS	P/O T5.0 + PAINT	1	1	1
20	3012923902	HINGE *U *L AS	P/O T5.0 + PAINT	1	1	1
22	3010657201	BRACKET ADJ FOOT	SPCC T3.0	2	2	2
23	3012105100	FOOT ADJ AS	PP	2	2	2
25	3013064200	HOLDER TUBE A	ACETAL	1	1	1
27	3011447200	COVER CAB BRKT	PP	1	1	1

- Some parts can be chaged for improving their perfomance without notice.

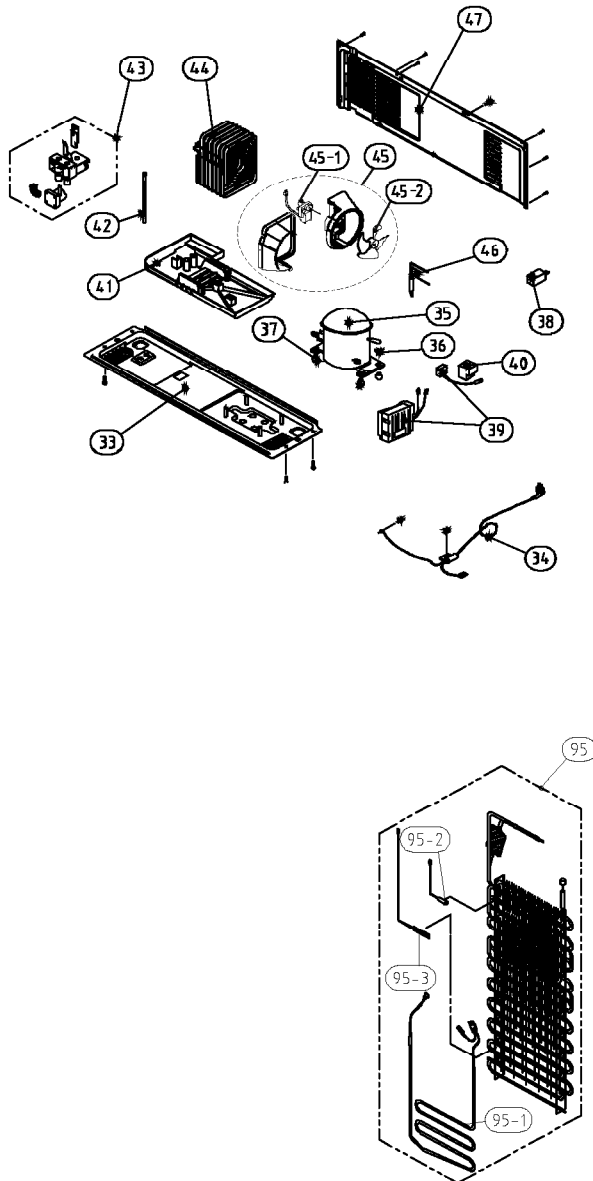
Date	Amdement Note

Machine Room / Eva Part

FRS-U20.. : R-134a Models

FRN-U20.. : R-600a Models

FRN-U20..I : R-600a + Inverter compressor Models



Machine Room

NO	PART-CODE	PART NAME	SPEC.	Q'ty		
				FRS-U20..	FRN-U20..	FRN-U20..I
29	3010340400	BASE COMP AS	FRU-571I	1	1	1
31	3011346701	CORD POWER AS	AC 250V 16A(VDE)	1	1	1
35	3956183D50	COMPRESSOR	MK183Q-L2U 220-240V-50HZ	1	x	x
	3956112250		DG125E11RAW5 220/240V 50HZ	x	1	x
	3956111M50		VEGZ11C 220-240V 50-60HZ	x	x	1
36	3016002500	SPECIAL WASHER	SK-5, T0.8	3	3	3
37	3010101600	ABSORBER COMP	NBR	4	x	4
	3010101480	ABSORBER COMP AS	SPRING	x	4	x
38	3016401170	CAPACITOR RUN	350VAC 5UF(EUROPEAN)	1	x	x
	3016401160		350VAC 4UF(EUROPEAN)	x	1	x
39	3018129600	SWITCH P RELAY AS	265RHB S330	1	x	x
	3018129650		232NFB,330M	x	1	x
	3010566500	BOX INVERTER AS	FRN-U20FAV1	x	x	1
40	3811402100	COVER RELAY	DS3-3NORYL S/S	1	x	x
	3001410010		DG125E11RAW5(A/S)	x	1	x
41	3011181300	CASE VAPORI AS	PP	1	1	1
42	3013201710	HOSE DRN B	PE FRB-5350NT	1	1	1
43	3015402300	VALVE WATER AS	220~240V 50,60Hz	1	1	1
44	3014461510	PIPE WICON AS	TSW OD4.76XT0.7	1	1	1
45	3018500510	M/BELL AS	FRU-571I PP(NATURAL)	1	1	1
45-1	3015916100	MOTOR C FAN	D4612AAA22	1	1	1
45-2	3011834710	FAN	PP OD3.17XD150	1	1	1
46	3016808100	DRYER AS	C1220T	1	1	1
47	3011497000	COVER MACH ROOM AS	SBHG T0.35	1	1	1

Eva Part

NO	PART-CODE	PART NAME	SPEC.	Q'ty		
				FRS-U20..	FRN-U20..	FRN-U20..I
95	3017053500	EVA AS	FRU-571I	1	1	1
95-1	3012818310	HEATER SHEATH AS	AC220V/ 192W	1	1	1
95-2	3014806900	SENSOR D AS	PBN-43	1	1	1
95-3	3017202010	FUSE TEMP AS	AC250V 10A 77C	1	1	1

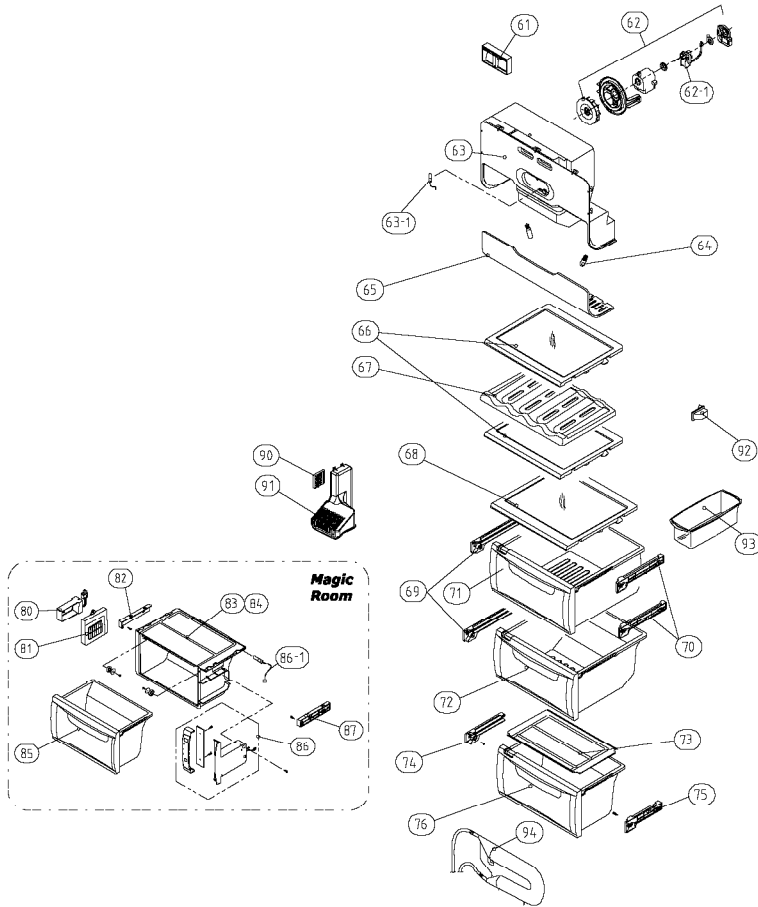
- Some parts can be changed for improving their performance without notice.

Date	A mendment Note

Fresh Food Compartment

U20D../U20F.. : None Magic Cool Zone Models

U20E../U20G.. : With Magic Cool Zone Models



NO	PART-CODE	PART NAME	SPEC.	Q'ty			
				FRS-U20D(F)	FRN-U20D(F)	FRS-U20E(G)	FRN-U20E(G)
61	3012214100	FRAME CHECK VALVE AS	FRU-571I	1	1	1	1
62	3012024200	FIXTURE MOTR AS		1	1	1	1
62-1	3015916000	MOTOR R FAN	D4612AAA20	1	1	1	1
63	3001415400	COVER DAMP AS	FRU-54AD	1	1	1	1
63-1	3014807100	SENSOR R AS	PBN-43B	1	1	1	1
64	3013602500	LAMP F/R	AC 240V 25W(S)	2	2	2	2
65	3015510800	WINDOW R LAMP	MIPS	1	1	1	1
66	3017842820	SHELF INMOLDING R A AS	FRAME+PRINTED GLASS	2	2	2	2
67	3017842510	SHELF WINE	GPPS(MILKY)	Option			
68	3017842920	SHELF INMOLDING R B AS	FRAME+PRINTED GLASS	1	1	1	1
69	3012514511	GUIDE CASE A *L AS	HIPS	2	2	2	2
70	3012514611	GUDIE CASE A *R AS	HIPS	2	2	2	2
71	3011109260	CASE VEGETB A AS	FRU-54AD	1	1	1	1
72	3011114680	CASE VEGETB B AS	FRU-54AD	1	1	1	1
73	3011446700	COVER V/CASE B	GPPS	1	1	x	x
74	3012529711	GUIDE CASE C *L AS	HIPS	1	1	x	x
75	3012529811	GUIDE CASE C *R AS	HIPS	1	1	x	x
76	3011114780	CASE VEGETB C AS	FRU-54AD	1	1	x	x
80	3016767100	DAMPER AS	DU24-013	x	x	1	1
81	3011450901	COVER DUCT CHANGE RM AS	FRU-541E	x	x	1	1
82	3012529500	GUIDE CHANGE RM *L	ABS SCRAP	x	x	1	1
83	3011446800	COVER CHANGE RM	GPPS	x	x	1	1
84	3010548200	BOX CHANGE RM	HIPS	x	x	1	1
85	3011115050	CASE CHANGE RM AS	FRU-54AE	x	x	1	1
86	3010551000	BOX CONTL CHANGE RM AS	FRU-541E/G	x	x	1	1
86-1	3014806800	SENSOR M AS	PBN-43B	x	x	1	1
87	3012529600	GUIDE CHANGE RM *R	ABS SCRAP	x	x	1	1
90	3018701800	DEO ANTI AS		1	1	1	1
91	3011445900	COVER RETURN DUCT	PP	1	1	1	1
92	3018124000	SWITCH DR	SP201R-7DR(R-134a)	1	x	1	x
	3018128500		SPF101B-2D(R-600a)	x	1	x	1
93	3011171310	CASE EGG AS	CASE+VINYL	1	1	1	1
94	3018201000	TANK WATER AS	FRU-541D	1	1	1	1

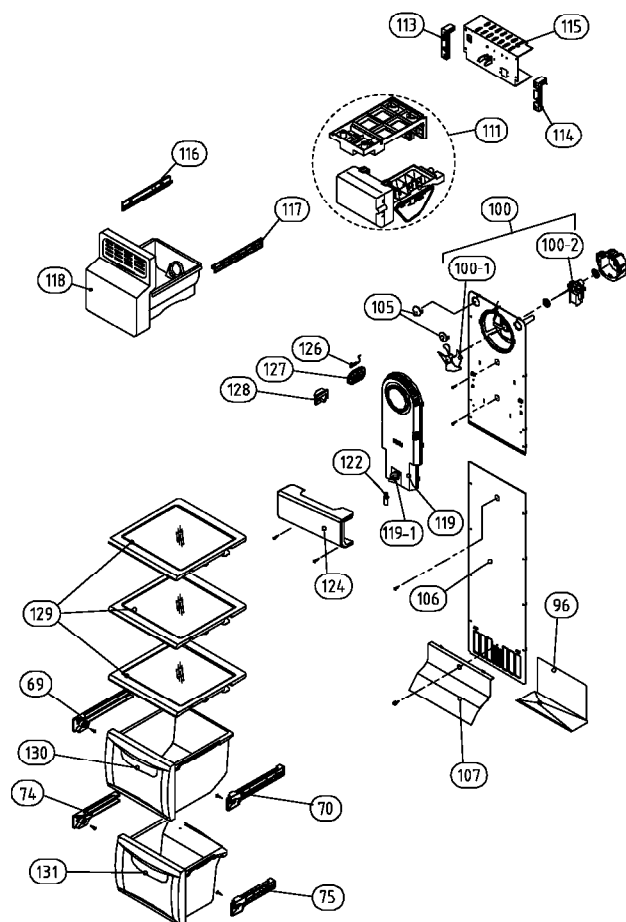
- Some parts can be chaged for improving their perfomance without notice.

Date	Amendment Note

Freezer Compartment

FRS-U20.. : R-134a Models

FRN-U20.. : R-600a Models



NO	PART-CODE	PART NAME	SPEC.	Q'ty	
				FRS-U20..	FRN-U20..
69	3012514511	GUIDE CASE A *L AS	HIPS	1	1
70	3012514611	GUIDIE CASE A *R AS	HIPS	1	1
74	3012529711	GUIDE CASE C *L AS	HIPS	1	1
75	3012529811	GUIDE CASE C *R AS	HIPS	1	1
96	3012529000	GUIDE DRN	GA	1	1
100	3018921710	LOUVER F A AS	FRU-571I	1	1
100-1	3011834520	FAN	PP OD130	1	1
100-2	3015915900	MOTOR F FAN	D4612AAA21	1	1
105	3010968600	CAP F LOUVER B	HIPS	2	2
106	3018921501	LOUVER F B AS	HIPS	1	1
107	3011443200	COVER F RETURN	HIPS	1	1
111	3012205810	FRAME ICE MAKER AS	FRU-541D(R-134a)	1	x
	3012205820		FRU-541D(R-600a)	x	1
113	3012517800	GUIDE G/MOTR BRKT *L	ABS	1	1
114	3012517900	GUIDE G/MOTR BRKT *R	ABS	1	1
115	3010658110	BRACKET GEARED MOTR AS	(MOLD/DY) 220~240V/50Hz	1	1
116	3012520510	GUIDE ICE CRUSHER *L	ABS	1	1
117	3012517710	GUIDE ICE CRUSHER *R	ABS	1	1
118	3011115202	CASE I/CRUSHER AS	FRU-541D	1	1
119	3001401760	COVER F FAN AS	FRU-541/547/549/54B	1	1
119-1	3017906610	SOCKET F LAMP AS	FR-5570FRB	1	1
122	3013602500	LAMP F	AC 240V 25W(S)	1	1
124	3015510700	WINDOW F LAMP	MIPS	1	1
126	3014807000	SENSOR F AS	PT-38	1	1
127	3011442600	COVER F SENS	ABS	1	1
128	3018124010	SWITCH DR	SP201R-7DR (R-134a)	1	x
			SPF101B-1D (R-600a)	x	1
129	3017842600	SHELF F AS	PRINTED GLASS	3	3
130	3011114880	CASE F A AS	FRU-54AD	1	1
131	3011114980	CASE F B AS	FRU-54AD	1	1

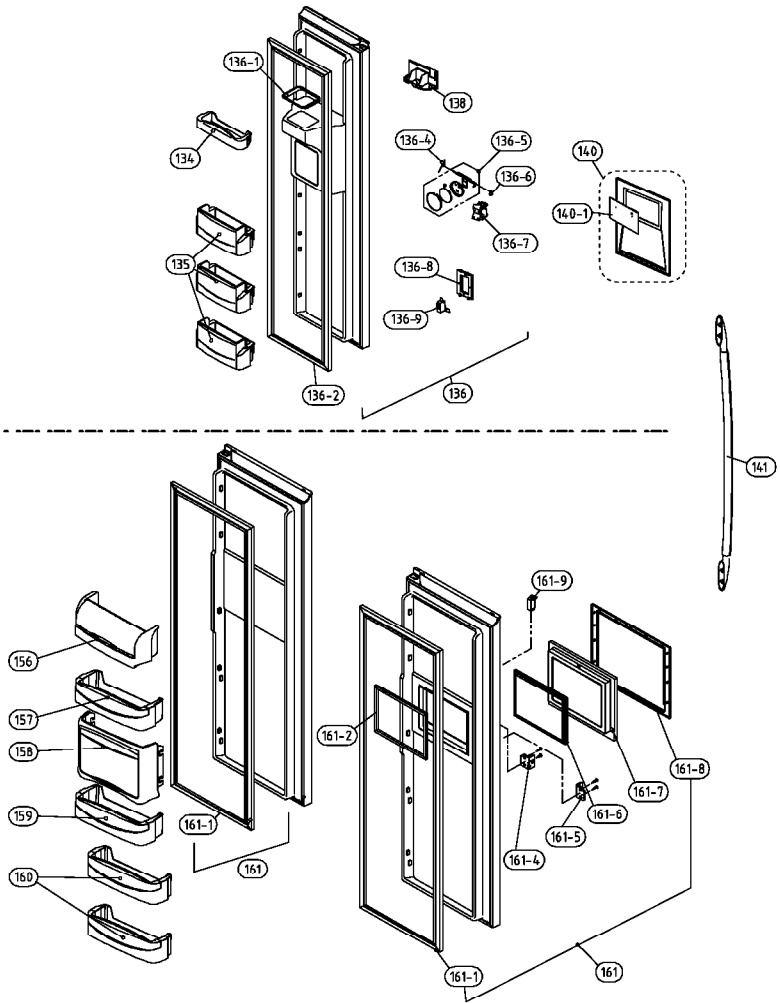
- Some parts can be changed for improving their performance without notice.

Date	Amendment Note

Arc Handle Type Door Part (1/2)

U20D(E)D.. : None H/Bar Models

U20F(G)D.. : With H/Bar Models



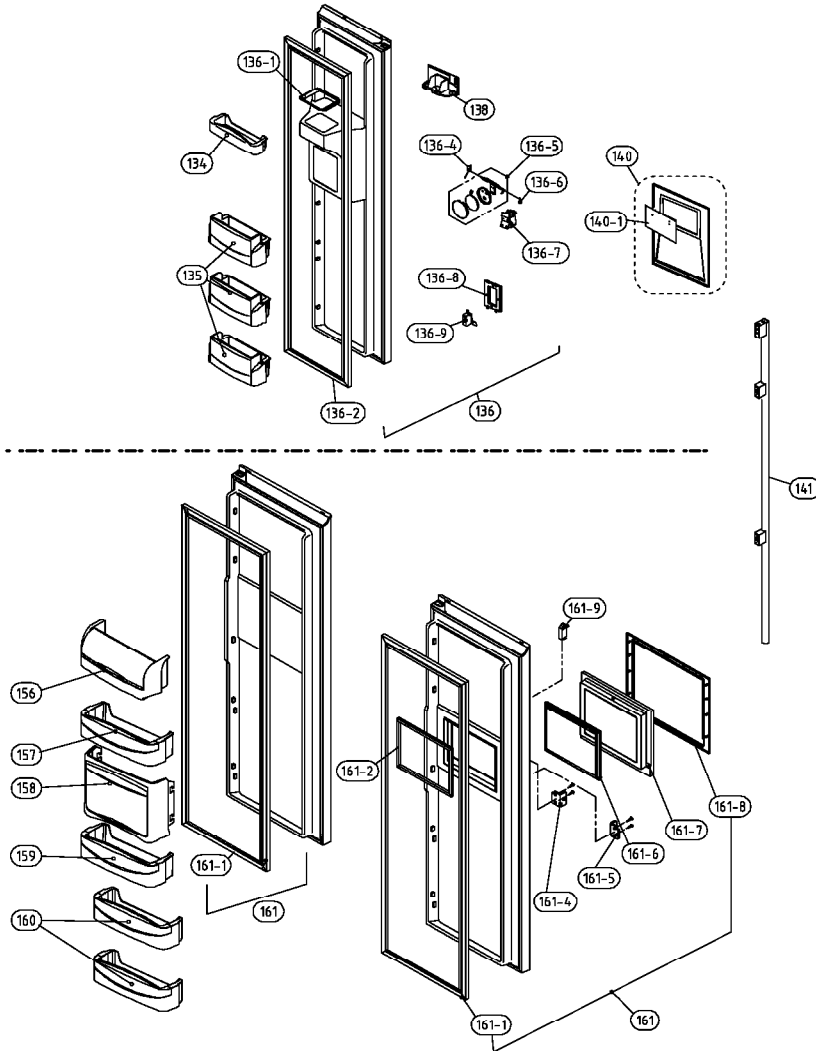
NO	PART-CODE	PART NAME	SPEC.	Q'ty	
				U20D(E)D..	U20F(G)D..
134	3019026700	POCKET F *T	HIPS	1	1
135	3019027450	POCKET F AS	FRU-54AD	3	3
136	3000079130	ASSY F DR	FRU-54AF (SUS430)	1	
	3000095310		FRU-54AF (TITANIUM PCM)		
	3000079700		FRU-54AF (03 SIVER)		
	3000079750		FRU-54AF (TITANIUM VCM)		
	3000079120		FRU-54AF (BLACK)		
136-1	3010964601	CAP ICE PATH FRAME	PP(FRS-551F)	x	1
136-2	3012318810	GASKET F DR AS	PVC+MAGNET	1	x
	3012318820	GASKET F DR AS	PVC+MAGNET(BK)	x	1
136-4	3015102200	SPRING ICE D LEVR	SUS	1	1
136-5	3011495300	COVER I/FLAP AS	FRU-541D	1	1
136-6	3012019700	FIXTURE I/SHUT LUVR	FR-S650CD	1	1
136-7	3015403000	VALVE SOL DISP	220~240V/50Hz	1	1
136-8	3016306500	BUTTON DISPNS AS	FRU-54AD	1	1
136-9	3018125800	SWITCH MICRO	VP333A-2D	1	1
138	3010563100	BOX DISPNS I/SHUT	ABS FRU-54AF	1	1
140	3001413800	COVER DISPNS BOX AS	FRU-54AD	1	x
	3001413810		FRU-54AF	x	1
140-1	30143G2160	PCB FRONT AS	FRU-54AD (FR-1 180X98.5-1.6T)	1	1
141	3012648701	HANDLE AS	ARC HANDLE(SANDING)	2	2
156	3019027530	POCKET DAIRY AS	FRU-54AD	1	1
157	3019027230	POCKET R *M AS	FRU-54AD	2	1
158	3019027720	POCKET R H/BAR AS	FRU-54AF	x	1
159	3011187020	CASE H/BAR AS	FRU-54AF	x	1
160	3019027330	POCKET R *S AS	FRU-54AD	2	2
161	3000079910	ASSY R DR	FRU-54AD/54MD (SUS 430)	1	x
	3000095410		FRU-54AD (TITANIUM PCM)		
	3000095420		FRU-54AF (TITANIUM PCM)		
	3000079870		FRU-54AF/KF/MF (BLACK)		
	3000079860		FRU-54AF (TITANIUM VCM)		
	3000079880		FRU-54AF (SUS430)		
161-1	3012318910	GASKET R DR AS	PVC+MAGNET	1	
	3012318910		PVC+MAGNET(BK)		
161-2	3012321400	GASKET H/BAR B AS	PVC	x	1
161-4	3015204500	STOPPER H/BAR DR *R	PO T4.0	x	1
161-5	3015204400	STOPPER H/BAR DR *L	PO T4.0	x	1
161-6	3012321300	GASKET R H/BAR A AS	PPV	x	1
	3012321310		PPV (BLACK)		
161-7	3011785800	DOOR H/BAR AS	FRU-54AF	x	1
161-8	3001411400	COVER H/BAR FRAME SAS	ABS+SPRAY	x	1
161-9	3018125400	SWITCH H/BAR DR AS	SP101B-2D1	x	1

- Some parts can be chaged for improving their performace without notice.

Long Handle Type Door Part (2/2)

U20D(E)F.. : None H/Bar Models

U20F(G)F.. : With H/Bar Models



NO	PART-CODE	PART NAME	SPEC.	Q'ty	
				U20D(E)F..	U20F(G)F..
134	3019026700	POCKET F *T	HIPS	1	1
135	3019027450	POCKET F AS	FRU-54AD	3	3
136	3000079710	ASSY F DR	FRU-54C (TITANIUM VCM)	1	
	3000079740		FRU-54C (BLACK)		
	3000079780		FRU-54C (TITANIUM PCM)		
	30000797A0		FRU-54C (SUS430)		
136-1	3010964601	CAP ICE PATH FRAME	PP(FRS-551F)	x	1
136-2	3012318810	GASKET F DR AS	PVC+MAGNET	1	x
	3012318820	GASKET F DR AS	PVC+MAGNET(BK)	x	1
136-4	3015102200	SPRING ICE D LEVR	SUS	1	1
136-5	3011495300	COVER I/FLAP AS	FRU-541D	1	1
136-6	3012019700	FIXTURE I/SHUT LUVR	FR-S650CD	1	1
136-7	3015403000	VALVE SOL DISP	220~240V/50Hz	1	1
136-8	3016306500	BUTTON DISPNS AS	FRU-54AD	1	1
136-9	3018125800	SWITCH MICRO	VP333A-2D	1	1
138	3010563100	BOX DISPNS I/SHUT	ABS FRU-54AF	1	1
140	3001413800	COVER DISPNS BOX AS	FRU-54AD	1	x
	3001413810		FRU-54AF	x	1
140-1	30143G2160	PCB FRONT AS	FRU-54AD (FR-1 180X98.5-1.6T)	1	1
141	3012645300	HANDLE BAR AS	FRU-547F	2	2
156	3019027530	POCKET DAIRY AS	FRU-54AD	1	1
157	3019027230	POCKET R *M AS	FRU-54AD	2	1
158	3019027720	POCKET R H/BAR AS	FRU-54AF	x	1
159	3011187020	CASE H/BAR AS	FRU-54AF	x	1
160	3019027330	POCKET R *S AS	FRU-54AD	2	2
161	3000079850	ASSY R DR	FRU-54CD (BLACK)	x	1
	3000079810		FRU-54CF (TITANIUM VCM)		
	30000798C0		FRU-54CF (SUS430)		
	3000079840		FRU-54CF (BLACK)		
161-1	3012318910	GASKET R DR AS	PVC+MAGNET	1	
	3012318910		PVC+MAGNET(BK)		
161-2	3012321400	GASKET H/BAR B AS	PVC	x	1
161-4	3015204500	STOPPER H/BAR DR *R	PO T4.0	x	1
161-5	3015204400	STOPPER H/BAR DR *L	PO T4.0	x	1
161-6	3012321300	GASKET R H/BAR A AS	PPV	x	1
	3012321310		PPV (BLACK)		
161-7	3011785800	DOOR H/BAR AS	FRU-54AF	x	1
161-8	3001411400	COVER H/BAR FRAME SAS	ABS+SPRAY	x	1
161-9	3018125400	SWITCH H/BAR DR AS	SP101B-2D1	x	1

- Some parts can be chaged for improving their performance without notice.