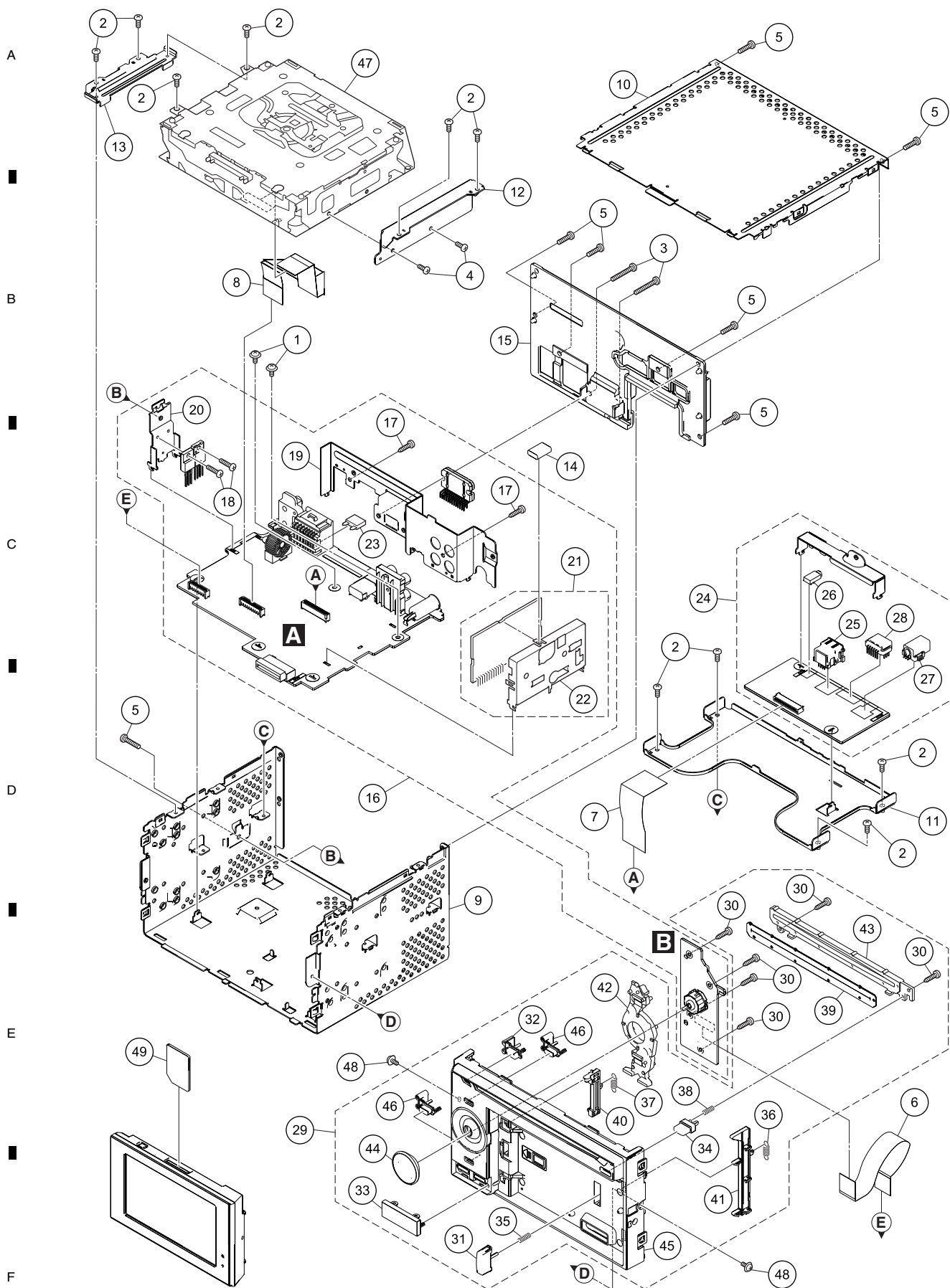
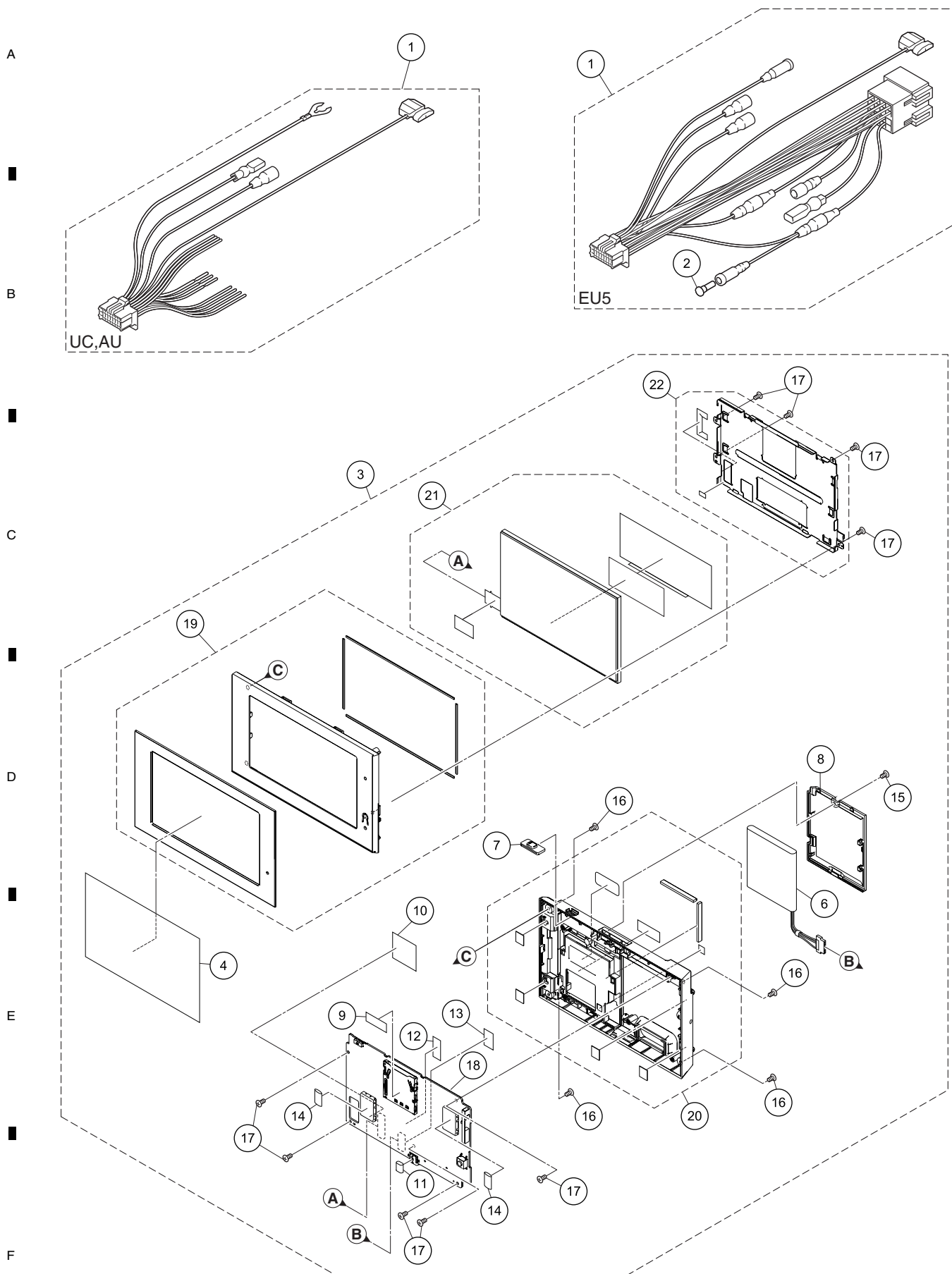


9.2 EXTERIOR(1)

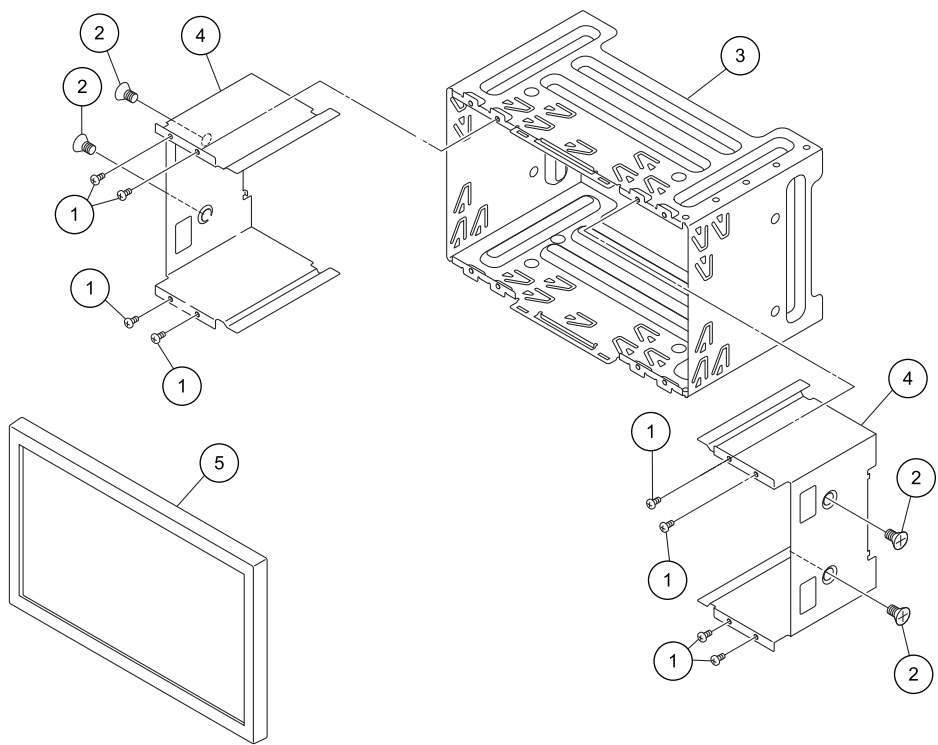


9.3 EXTERIOR(2)



5 6 7 8

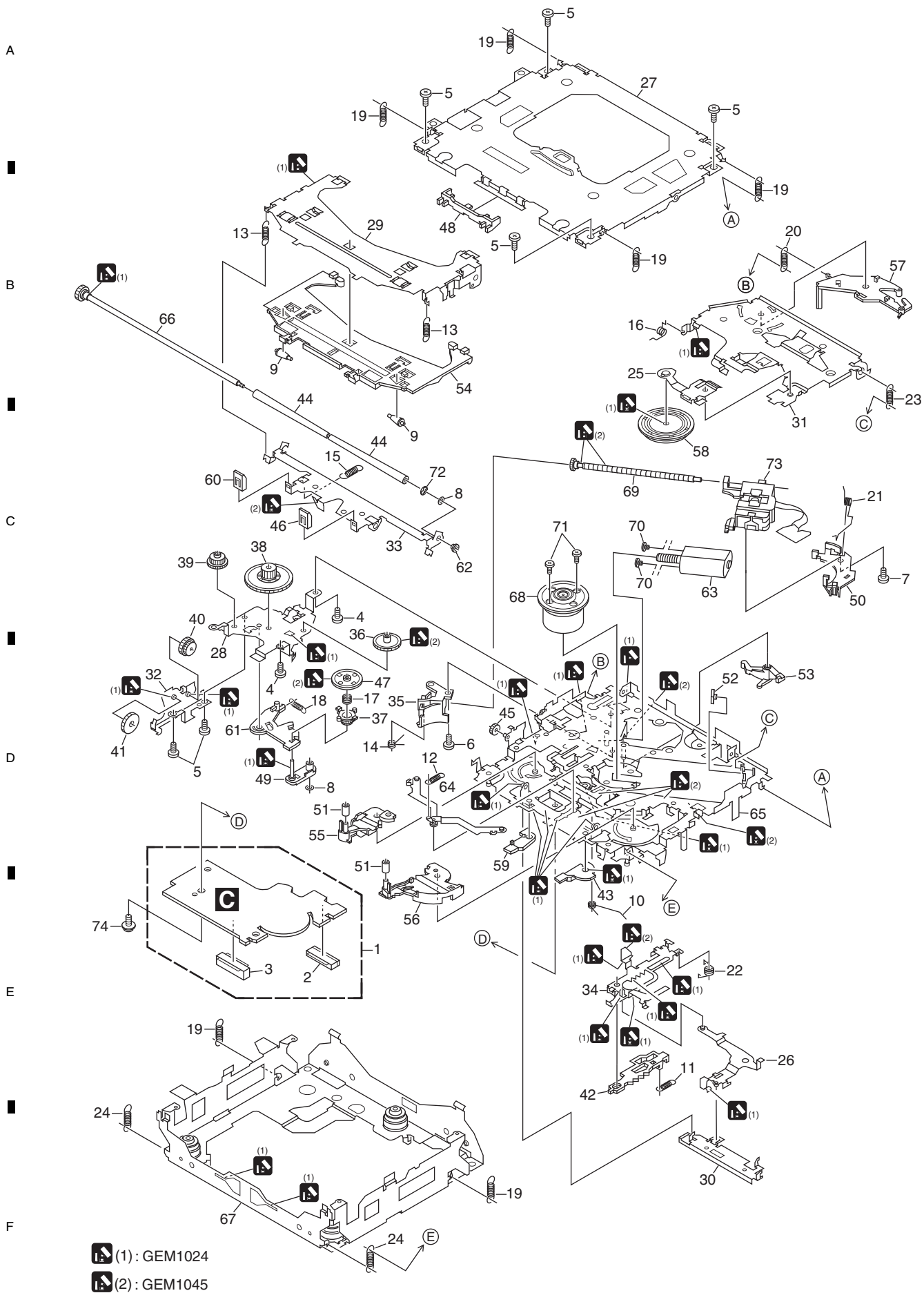
EXTERIOR(3)(AVIC-F320BT/XSEU5)



EXTERIOR(3)(AVIC-F320BT/XSEU5) SECTION PARTS LIST


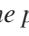
| <u>Mark</u> | <u>No.</u> | <u>Description</u> | <u>Part No.</u> |
|-------------|------------|--------------------|-----------------|
| | 1 | Screw | BMZ30P060FTC |
| | 2 | Screw | CMZ50P060FTC |
| | 3 | Holder | CND3430 |
| | 4 | Holder | CND3431 |
| | 5 | Panel | CNU1288 |

9.4 CD MECHANISM MODULE



9. EXPLODED VIEWS AND PARTS LIST

NOTES :

- Parts marked by " * " are generally unavailable because they are not in our Master Spare Parts List.
- The  mark found on some component parts indicates the importance of the safety factor of the part. Therefore, when replacing, be sure to use parts of identical designation.
- Screw adjacent to  mark on the product are used for disassembly.
- For the applying amount of lubricants or glue, follow the instructions in this manual.

(In the case of no amount instructions, apply as you think it appropriate.)

9.1 PACKING

