

5  
—  
4  
—  
3  
—  
2  
—  
1

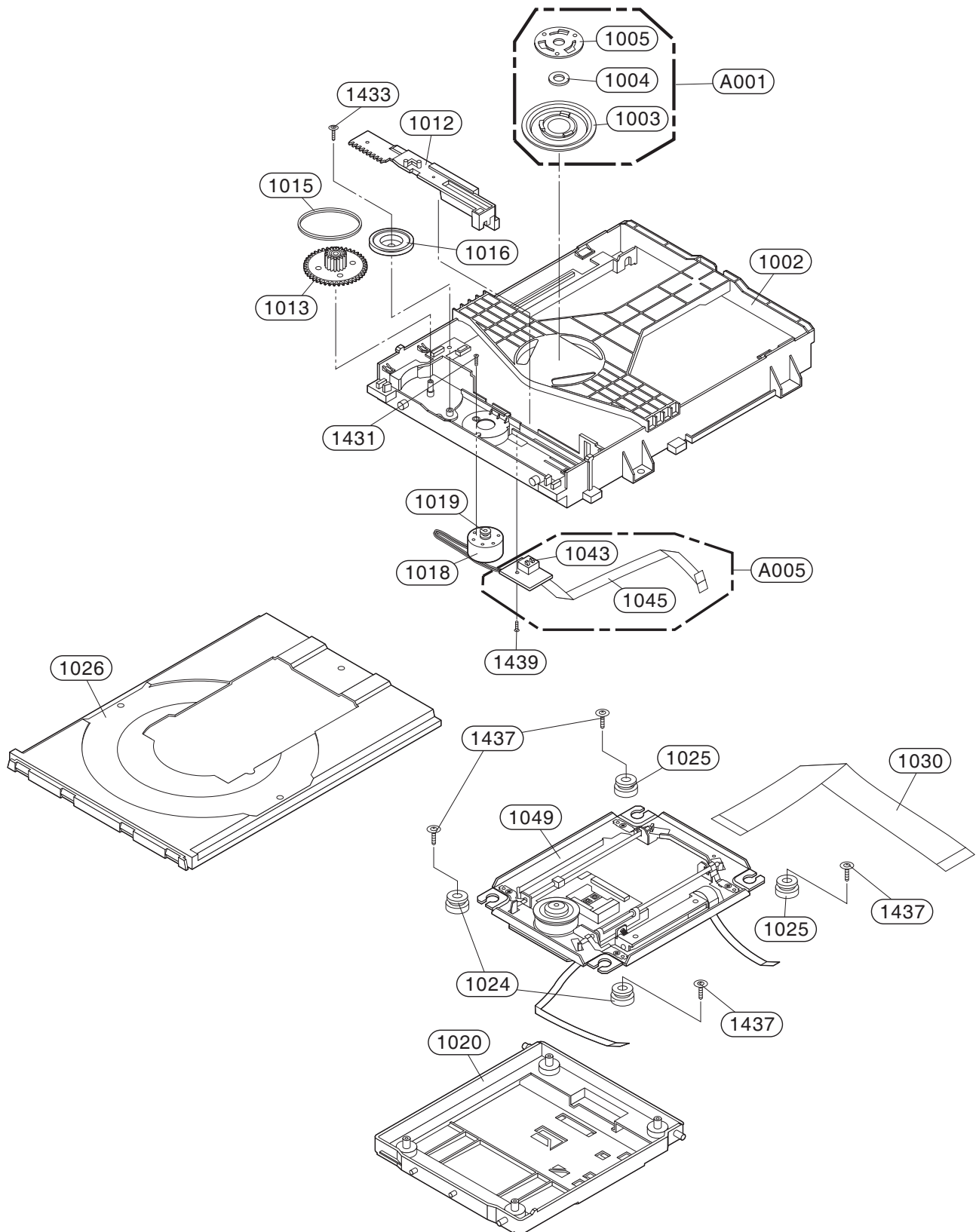
## 4

3



D

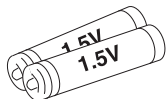
## 2. DECK MECHANISM SECTION, BM10A(LG06)



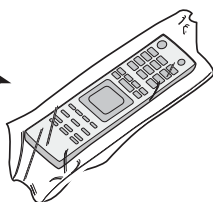
### 3. PACKING ACCESSORY SECTION

#### ★ OPTIONAL PARTS

(808) Battery



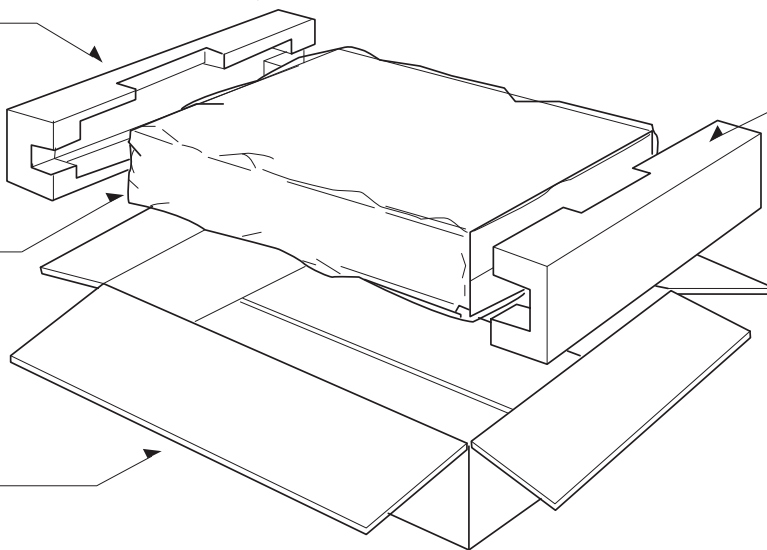
(900) Remote Control



(801) Instruction Ass'y



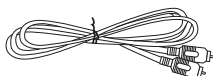
(803) Packing



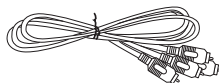
(804) Bag

(802) Box

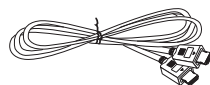
(811) Plug Ass'y 1way



(812) Plug Ass'y 2way



★ (823) HDMI Cable



★ (832) Disc



(803) Packing