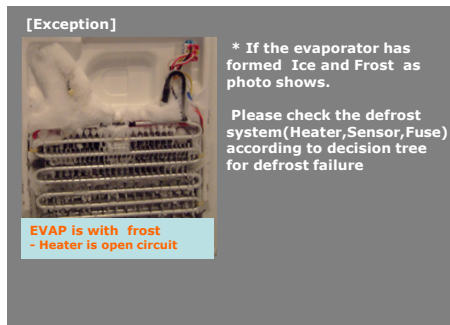
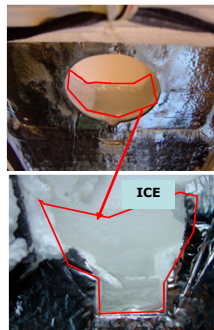
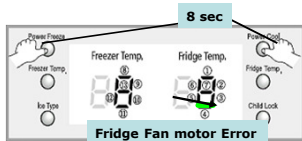


Product :	Refrigerator	Bulletin No. :	2007-Ref-07
Model :	RS21,23,55X,56X,60	Bulletin Date :	2007/02/28
Buyer :	All	ECN No. :	
SUBJECT : Drain hole of ASSY COVER EVAP REF improvement			

**Background (Symptom)**

- Noise from Fridge fan or not cooling
- Noise disappears when the customer opens the door.
- Defrost sensor, Heater, Fuse are OK but Big Ice clump forms in the drain hole of ASSY COVER EVAP REF

**Cause**

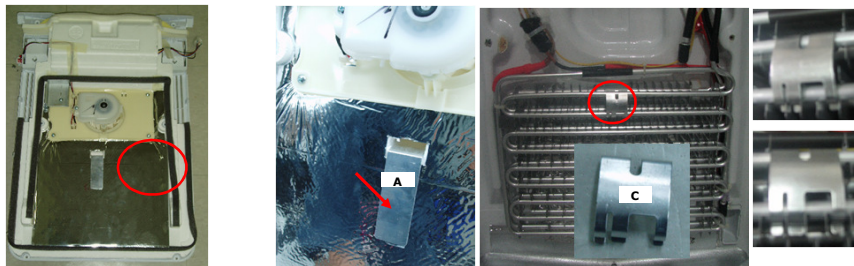
1. The heat from the defrost heater does not transfer to the drain hole of the ASSY COVER EVAP REF
2. Styrofoam around the fan absorbs moisture and frost forms.
3. During defrost, the ice partially melts and refreezes.
4. Ice formation increases until the ice interferes with Fan blade.
5. Weak cooling occurs.
6. Self diagnosis mode will display Fan motor error.

**Solution**

- Aluminum sections for better heat-transfer are added

Plate A connects with clip C to ensure that heat is transferred from the heater to the drain hole.

- This improvement is to be applied from March 2007 production.



- For the production before March 2007, replace ASSY COVER EVAP REF KIT if the drain hole's clogged with Ice

- Replacement method is

"Replacement method"

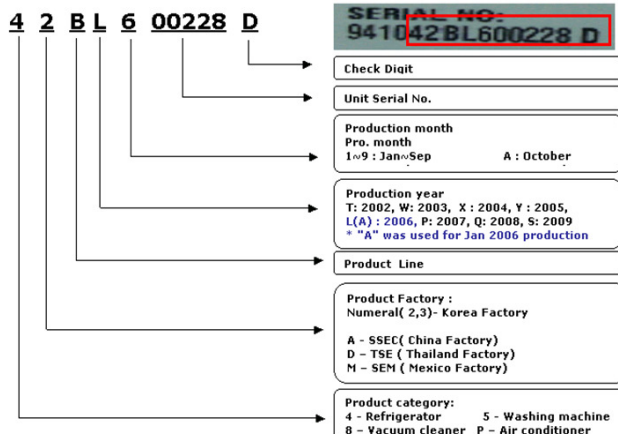
- Part code is as followings

To Make sure part code, please check this SVC bulletin in GSPN. It incl Model & Part list.

MODEL	PART NAME	PART CODE	REMARK
RS60K&J	ASSY-COVER EVAP REF KIT	DA97-05290B	With Coolselect Zone, 230V
RS60K&J	ASSY-COVER EVAP REF KIT	DA97-05290C	With Coolselect Zone, 220V
RS21,23(55X,56X)D&F&N&B	ASSY-COVER EVAP REF KIT	DA97-05290Q	Without Coolselect Zone, BLDC, Print
RS21,23(55X,56X)K&J	ASSY-COVER EVAP REF KIT	DA97-05290E	With Coolselect Zone
RS60D&F	ASSY-COVER EVAP REF KIT	DA97-05290F	Without Coolselect Zone, 220V
RS60D&F&N	ASSY-COVER EVAP REF KIT	DA97-05290H	Without Coolselect Zone, 230V
RS60N,B	ASSY-COVER EVAP REF KIT	DA97-05290J	Without Coolselect Zone, N-Option
SS20,22	ASSY-COVER EVAP REF KIT	DA97-05290L	Without Coolselect Zone, AC, 110V~127V
SS20,22	ASSY-COVER EVAP REF KIT	DA97-05290M	Without Coolselect Zone, AC, 220V~240V
SS20,22	ASSY-COVER EVAP REF KIT	DA97-05290N	Without Coolselect Zone, BLDC, Print

**2. Application date**

- Year digit for 2007 was planned to be "M" but has now changed to "P" from January 2007.



Application	Reference ( ), Only Defected sets ( O ), Whole sets ( )
Attachment	Schematic Diagram ( ), Component Lay-out ( ), Applied Model ( )
Production Month :	March, 2007
Published by :	N.Y.JEON
Checked by :	S.J SHIN
Serial No. (~ from)	43AP3*****(42BP3*****)
Approved by :	S.J SHIN