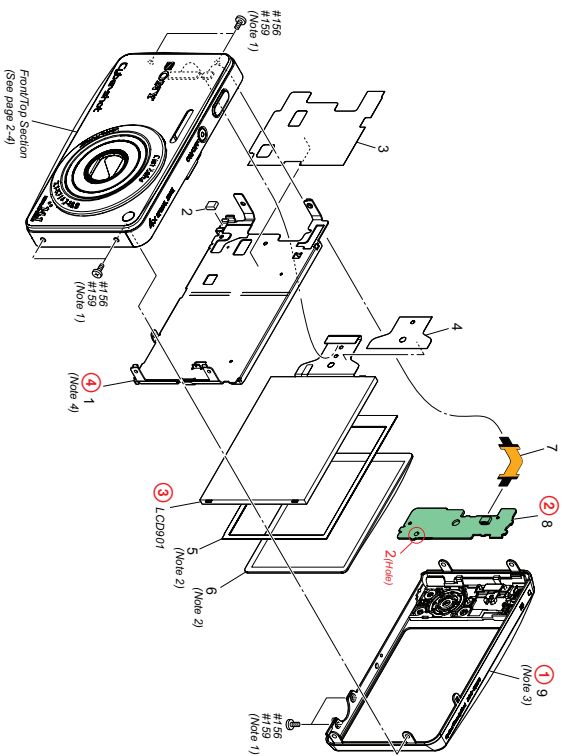


2-1. EXPLODED VIEWS

2-1-1. REAR SECTION



Ref.No.	Part No.	Description
* 1	4-167-575-01	FRAME (R60) (Main-4)
* 2	3-288-734-01	CASET (280)
* 3	4-167-576-01	SHEET (640) SYN INSULATING
4	4-188-188-01	SHEET (670) LCD INSULATING

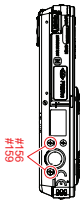
Ref.No.	Part No.	Description
6	4-188-182-01	WINDOW (670) LCD (Main-2)
7	1-480-028-11	PC CONTROL BOARD
8	A-1731-538-A	SV-582 BOARD COMPLETE
9	X-2581-645-1	CABINET REAR ASSY (640) (Main-3)

DISASSEMBLY

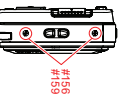
1. Remove to numerical order (①) to (④) in the left figure.

① #156 / #159 X 6

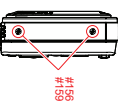
Bottom View



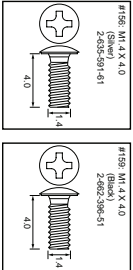
Left View



Right View



Screw



Note

Note 1
**THE COMBINATION OF CABINETS
COLOR AND SCREW**
The screw pointed (●) is different according to the cabinet's color.
For the combination of cabinet's color and screw, please refer to Table 2-1.



Table 2-1	
Screw's Ref.No. (Parts Color)	Cabinet's Color
#156 (Silver)	SILVER/PINK/GOLD
#159 (Black)	BLACK/BLUE

Note 2: Refer to "Assembly-6: Attaching Method of LCD cushion (670) and LCD window (670)".

Note 2: "Assembly-6: Attaching Method of LCD cushion (670) and LCD window (670)"を参照してください。

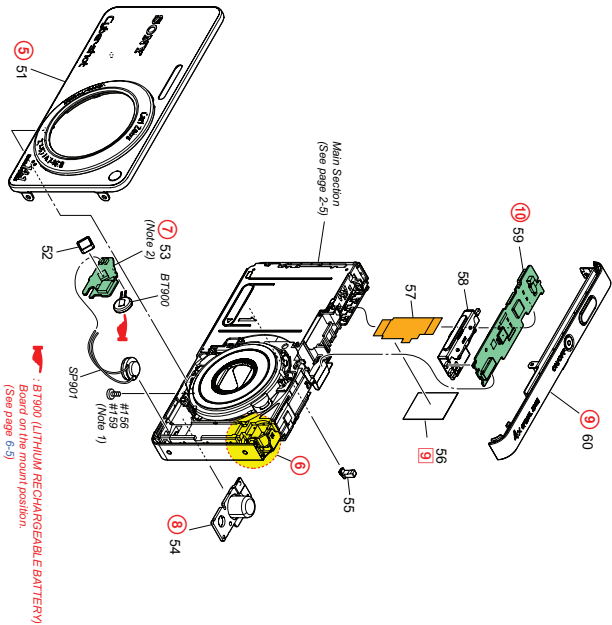
Note 3: Refer to "Assembly-5: Precaution During Cabinet (Rear) Assy Installation".

Note 3: "Assembly-5: Precaution During Cabinet (Rear) Assy Installation"を参照してください。

Note 4: Refer to "Assembly-4: Precaution During Main Frame Installation".

Note 4: "Assembly-4: Precaution During Main Frame Installation"を参照してください。

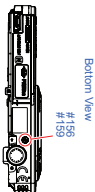
2-12. FRONT/ TOP SECTION



Ref.No.	Part No.	Description	Ref.No.	Part No.	Description
51	X-254-433-1	CABINET FRONT/ASSY (640) (SILVER)	* 56	4-163-150-1	TYPE (N)
51	X-254-433-1	CABINET FRONT/ASSY (640) (BLACK)	57	1-489-235-1	PC-016 FLEXIBLE BOARD
51	X-254-433-1	CABINET FRONT/ASSY (640) (PINK)	58	1-489-586-1	FLASH UNIT
51	X-254-433-1	CABINET FRONT/ASSY (640) (GOLD)	59	A-173-542-A	ST232 BOARD COMPLETE
51	X-254-433-1	CABINET FRONT/ASSY (640) (BLUE)	60	X-254-433-1	CABINET UPPER/ASSY (640) (SILVER)
62	4-411-391-01	HOLDER MICROPHONE	60	X-254-430-1	CABINET UPPER/ASSY (640) (BLACK)
63	A-173-544-A	SPQ02 BOARD COMPLETE (N/A) 2	60	X-254-434-1	CABINET UPPER/ASSY (640) (PINK)
64	4-163-150-1	SCREW (640) TYPE (N)	60	X-254-432-1	CABINET UPPER/ASSY (640) (GOLD)
65	4-163-150-1	LIGHT (640) NO GUIDE	60	X-254-433-1	CABINET UPPER/ASSY (640) (BLUE)

DISASSEMBLY

1. Remove to numerical order (8) to (9) in the left figure.



(8) #156 / #159 X 1

Bottom View

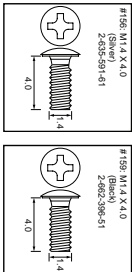
(9)

DISCHARGING OF THE CHARGING CAPACITOR

ストロホ用充電コンデンサの放電

(9) Tape (N5) (13)

Screw



Note 1

THE COMBINATION OF CABINETS
COLOR AND SCREW

The screw pointed (8) is different according to the cabinet's color.
For the combination of cabinet's color and screw, please refer to Table 2-1.



Table 2-1		
Screw's Ref. No.	Parts Color	Cabinet's Color
#156 (Silver)	SILVER/PINK/GOLD	
#159 (Black)	BLACK/BLUE	

Caution :
Danger of explosion if battery is incorrectly replaced.
Replace only with the same or equivalent type.
Dispose of used batteries according to the instructions.

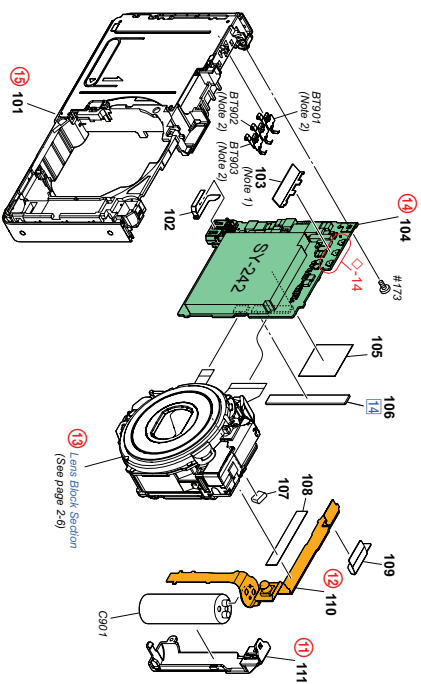
注意 :
電池の交換は、正しく行わないと爆発する恐れがあります。電池を交換する場合には必ず同じ型名の電池又は同等品を交換してください。
使用済み電池は、取扱指示に従って処分してください。

Note 2: Refer to "Assembly-3: Precaution During SP-Q02 Board Installation".

Note 2: "Assembly-3: Precaution During SP-Q02 Board Installation"を参照してください。

The changed portions from Ver. 1.0 are shown in blue.

2-1-3. MAIN SECTION



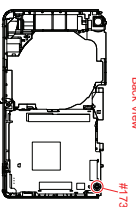
Ref. No.	Part No.	Description
101	X-254-62-5	CABINET ASSY (640), CENTER (SILVER)
101	X-254-62-6	CABINET ASSY (640), CENTER (BLACK)
101	X-254-62-7	CABINET ASSY (640), CENTER (PINK)
101	X-254-62-8	CABINET ASSY (640), CENTER (GOLD)
101	X-254-62-9	CABINET ASSY (640), CENTER (BLUE)
102	4-167-571-01	SHEET MULTI PRODUCTION
103	4-168-198-01	INSULATING SHEET (670) (No. 1)
104	A-732-37-4A	SV-322 BOARD (CATER SERVICE)

Ref. No.	Part No.	Description
* 106	4-172-609-01	SHEET LOD REINFORCEMENT
* 107	3-289-754-01	GASNET (280)
* 108	4-172-234-01	TYPE A-234, DOUBLE STICK
* 109	4-167-565-01	TYPE (A)
* 110	4-173-566-04	REINFOR FLEXIBLE BOARD COMPLETE
* 111	4-167-573-01	REINFOR (640) CAPACITOR
Δ-187101	1-7-80-553-11	TERMINAL BOARD BATTERY (Nob 2)

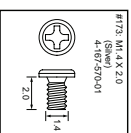
DISASSEMBLY

1. Remove to numerical order (11 to 15) in the left figure.
2. The meaning of the sign in left figure is as follows. Be careful when it removes.

⑭ #173X 1 → LCD REINFORCEMENT SHEET (⑭)



Screw

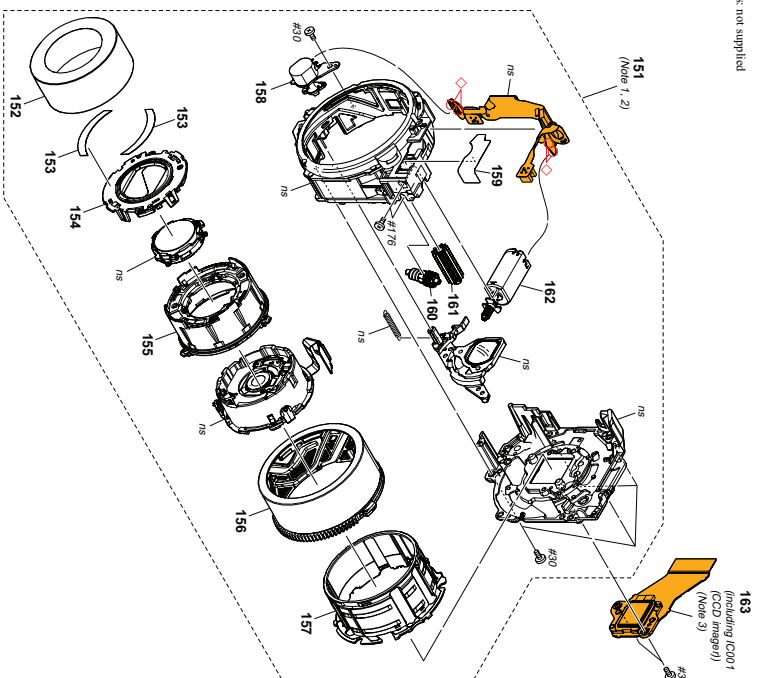


Note

Note 1: Refer to Assembly-2: Insulating Sheet (670) Putting Position.	Note 1: *Assembly-2: Insulating Sheet (670) Putting Positionを参照してください。
Note 2: Refer to *Assembly-1: Installation Method of Battery Terminal Board.	Note 2: *Assembly-1: Installation Method of Battery Terminal Boardを参照してください。

2-1-4. LENS BLOCK SECTION

ns: not supplied



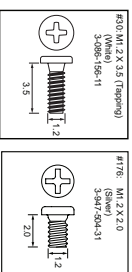
Ref. No.	Part No.	Description	Ref. No.	Part No.	Description
151	8-340-861-01	DEVICE, LENS (SV-1380A (Note 1, 2))	161	A-17473-14	NARUTO GEAR LUBRICATED ASSY
152	4-155-850-01	RING A (S), ORNAMENTAL	162	CD MOTOR W/BL ASSY	CD MOTOR W/BL ASSY
153	4-147-109-01	TAPER BARRIER	163	A-17315-74	CD-74 BOARD COMPLETE (including I/O001)
154	A-17457-14	BARRIER ASSY			(CD-74 megar) (Note 3)
155	4-147-091-01	FRAME 1 GROUP	#30	3-098-156-11	SCREW B12

M.No.	Part No.	Description
161	A-1743-73-1A	NAUTO GEAR LUBRICATED ASSY
162	A-1743-72-5A	DC MOTOR WORN A ASSY
163	A-1731-54-7A	CD 7010 BOARD COMPLETE (including I/O01 (CCD image)) (Note 3)

DISASSEMBLY

1. The meaning of the sign in left figure is as follows. Be careful when it removes \diamond : Solder

Screw

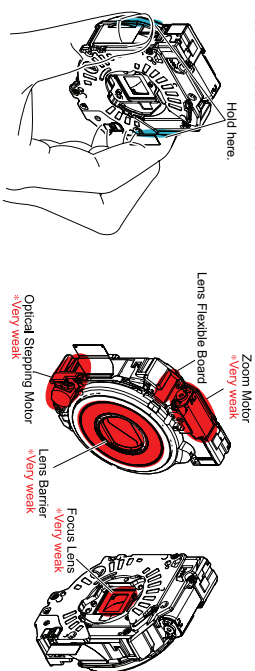


Note

Note 1

PRECAUTIONS WHEN HOLDING THE LENS BLOCK

- Hold the Lens Block at the center of both sides.
- Do not hold the following part.



Note 2: レンズブロックの各部品を交換する際は、下記の各項目を参照してください

- 1-6. ORNAMENTAL RING OR BARRIER ASSY REPLACING METHOD (page 1-7)
- 1-7. OPTICAL STEPPING MOTOR (F1380) REPLACING METHOD (page 1-7)
- 1-8. DC MOTOR WORM A ASSY REPLACING METHOD (page 1-8)
- 1-9. CAM TUBE BLOCK ASSY AND STRAIGHT TUBE LUBRICATED ASSY AND GROUP FRAME REPLACING METHOD (page 1-8)
- 1-10. FINAL INSPECTION (page 1-12)

Note 2: Refer to the following each item when you exchange parts of Lens Block

- 1-6. ORIENTAL RING OR BARRIER ASSY REPLACING METHOD (page 1-7)
- 1-7. OPTICAL STEPPING MOTOR (F1E380) REPLACING METHOD (page 1-7)
- 1-8. DC MOTOR WORM ASSY REPLACING METHOD (page 1-8)
- 1-9. CAM TUBE FRAME ASSY AND STRAIGHT TUBE LUBRICATED ASSY AND 1-GROUP FRAME REPLACING METHOD (page 1-8)
- 1-10. FINAL INSPECTION (page 1-12)

Note 3: イメージの交換時は6-1ページのイメージ交換時の注意を必ずご確認ください。

Checking supplied accessories.

Note: This item is supplied with the unit as an accessory but is not prepared as a service part.



Battery charger
(BC-CSN/BC-CSNB)

- Δ 1487-523-21 (US, CND)
Δ 1487-523-31 (CH)
Δ 1487-523-51 (J)
Δ 1487-523-61
(EXCEPT US, CND, J, CH)



Power cord (mains lead)

- (EXCEPT US, CHD, J, CH, BR)
 Δ 1-837-420-11 (AR)
 Δ 1-837-421-11 (UK, E (Saudi), HK)
 Δ 1-837-422-11 (JE)
 Δ 1-837-427-11 (AE, P, E (EXCEPT Saudi))
 Δ 1-837-428-11 (KR)
 Δ 1-837-429-11 (AUS)



2-050-981-01 (Gray) (SILVER, PINK, GOLD)



multi-use terminal
1-837-299-11

Rechargeable battery pack
(NP-BN1)
(Note)Conversion (ZP) Adaptor
 Δ 1-569-007-12 (JE)

Conversion (2P) Adaptor



Instruction Manual

(Only for destination Japanese model)
日本語、英語、韓国語、中国語のみ部品供給可能です。

- [illegible]



Cyber-shot Handbook (PDF)

- The printed matter is not supplied. If required, the CD-ROM supplied contains all of language version of the Instruction Manual in pdf (Cyber-shot Handbook.pdf) for printing.

- 日本国内については日本語のみが印刷での部品供給可能です

- [illegible]

2.2. ELECTRICAL PARTS LIST

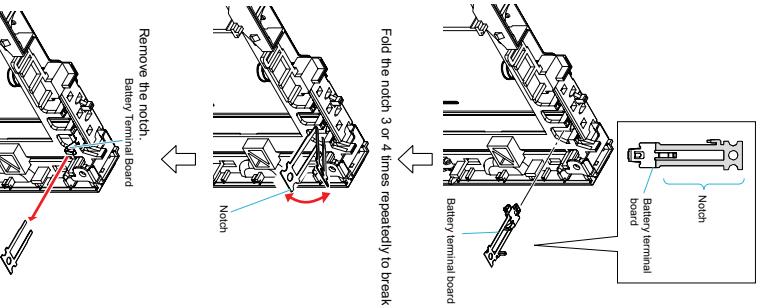
Ref.No.	PartNo.	Description	Ref.No.	PartNo.	Description	Ref.No.	PartNo.	Description
A-1731-5416A AF-125 FLEXIBLE BOARD, COMPLETE ***** (0202 is not supplied, but this is included in AF-125 flexible complete board.)			* I0001 6-715-975-01 IC BDQ215NU-E2 <IC> <COIL> INDUCTOR 22uH <TRANSISTOR> TRANSISTOR TIG06CEP-TL-H			Caution Danger of explosion if battery is incorrectly replaced. Replace only with the same or equivalent type. Dispose of used batteries according to the instructions. 注意 電池の交換は、正しく行わないと破裂する恐れがあります。 電池を交換する場合は必ず同じ型名の電池は同専品と交換してください。 電池は、取扱指示に従って処分してください。		
D202 (Not supplied) DIODE SC94M40T796 (0202 is supplied including in AF-125 board complete board.)			* L001 1-410-920-11 <RESISTOR> RESISTOR			Please refer to LEVEL 3 about the ELECTRICAL PARTS LIST of CD-774 and SY-242 board. CD-774またはSY-242基板のELECTRICAL PARTS LISTについては、LEVEL3を参照して下さい。		
1-480-206-11 FPC-016 FLEXIBLE BOARD *****			Δ R003 1-215-121-11 METAL CHIP 1M 5% 1/10W R004 1-215-862-11 METAL CHIP 1M 5% 1/16W R005 1-215-863-11 METAL CHIP 10 5% 1/16W R006 1-215-897-11 METAL CHIP 100K 5% 1/10W R007 1-215-948-11 METAL CHIP 380 5% 1/16W <SWITCH> * S001 1-786-196-21 TACTILE SWITCH * S002 1-786-914-31 SWITCH, TACTILE <TRANSFORMER> Δ * T001 1-445-774-11 D.C.-D.C.CONVERTER TRANSFORMER					
A-1731-5444 SP-052 BOARD COMPLETE ***** (BT900 LITHIUM BATTERY) is not included in SP-052 complete board.)			Δ R003 1-215-121-11 METAL CHIP 1M 5% 1/10W R004 1-215-862-11 METAL CHIP 1M 5% 1/16W R005 1-215-863-11 METAL CHIP 10 5% 1/16W R006 1-215-897-11 METAL CHIP 100K 5% 1/10W R007 1-215-948-11 METAL CHIP 380 5% 1/16W <SWITCH> * S001 1-786-196-21 TACTILE SWITCH * S002 1-786-914-31 SWITCH, TACTILE <TRANSFORMER> Δ * T001 1-445-774-11 D.C.-D.C.CONVERTER TRANSFORMER					
Δ BT900 1-756-710-12 LITHIUM RECHARGEABLE BATTERY <CAPACITOR> C001 1-125-777-11 CERAMIC CHIP 0.1uF 10% 10V <CONNECTOR> CN002 1-4916-654-61 FFC/FPC CONNECTOR (LIF) 8P <MICROPHONE> MIC001 1-542-796-21 MICROPHONE <RESISTOR> R003 1-218-946-11 METAL CHIP 220 5% 1/16W			A-1731-5334 SW-562 BOARD, COMPLETE ***** <CONNECTOR> * CN001 1-4321-467-51 CONNECTOR, FPC (LIF NON-ZIF) <RESISTOR> R002 1-218-957-11 METAL CHIP 2.2K 5% 1/16W <COMPOSITION CIRCUIT BLOCK> RB001 1-234-376-11 RES. NETWORK 2.2K (1005X) RB002 1-234-376-11 RES. NETWORK 2.2K (1005X) <SWITCH> * S001 1-786-914-31 SWITCH, TACTILE * S002 1-786-914-31 SWITCH, TACTILE * S003 1-786-914-31 SWITCH, TACTILE * S004 1-786-914-31 SWITCH, TACTILE * S005 1-786-914-31 SWITCH, TACTILE * S006 1-786-914-31 SWITCH, TACTILE * S007 1-786-914-31 SWITCH, TACTILE * S008 1-786-914-31 SWITCH, TACTILE * S009 1-786-914-31 SWITCH, TACTILE * S010 1-786-947-11 SIGNAL SELECTOR SWITCH * S011 1-786-914-31 SWITCH, TACTILE					
A-1731-5424 ST-225 BOARD, COMPLETE *****			* S001 1-786-914-31 SWITCH, TACTILE * S002 1-786-914-31 SWITCH, TACTILE * S003 1-786-914-31 SWITCH, TACTILE * S004 1-786-914-31 SWITCH, TACTILE * S005 1-786-914-31 SWITCH, TACTILE * S006 1-786-914-31 SWITCH, TACTILE * S007 1-786-914-31 SWITCH, TACTILE * S008 1-786-914-31 SWITCH, TACTILE * S009 1-786-914-31 SWITCH, TACTILE * S010 1-786-947-11 SIGNAL SELECTOR SWITCH * S011 1-786-914-31 SWITCH, TACTILE					
* C002 1-142-746-11 CERAMIC CHIP 4.7uF 10% 6.3V * C003 1-140-911-91 CERAMIC CHIP 22uF 20% 15V Δ * C004 1-140-911-91 CERAMIC CHIP 0.01uF 10% 50V Δ * C006 1-144-950-11 CERAMIC CHIP 100uF 0.5uF 50V Δ C008 1-100-761-21 CERAMIC CHIP 0.01uF 10% 250V <CONNECTOR> CN001 1-4171-828-81 CONNECTOR, FPC (2P, 2P) * CN003 1-422-914-11 CONNECTOR, FPC (LIF (NON-ZIF))								
<DIODE>								

3. ASSEMBLY

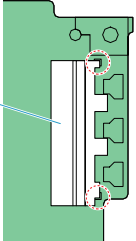
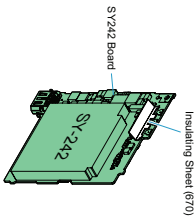
Assembly-1: Installation Method of Battery Terminal Board

Remove the battery terminal board by bending the claw of rock portion.
When assembling the battery terminal board, replace it with new one because battery terminal board will be bent.

Insert the battery terminal board into a slit in B1 holder to install.
Battery terminal board is attached with notch for installation.

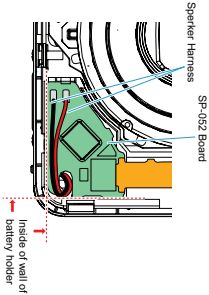


Assembly-2: Insulating Sheet (670) Putting Position

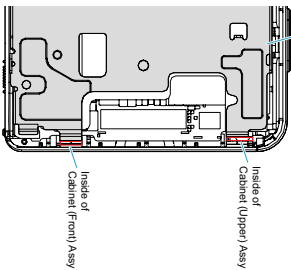
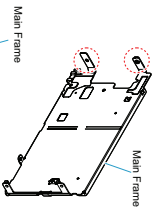


Assembly-3: Precaution During SP-052 Board Installation.

Route the speaker harness as shown below.

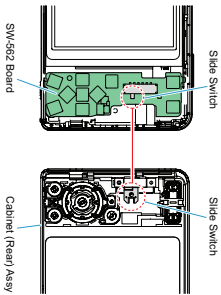


Assembly-4: Precaution During Main Frame Installation.



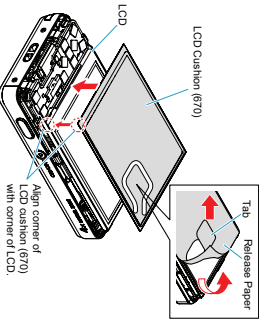
Assembly-5: Precaution During Cabinet (Rear) Assy Installation.

Align the slide switch of Cabinet (Rear) Assy with the slide switch of SW-562 Board.

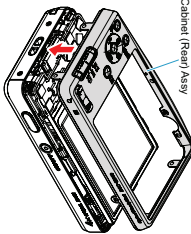


Assembly-6: Attaching Method of LCD Cushion (670), LCD Window (670)

Apply LCD cushion (670).
And have the tab of the Release Paper and peel it off.



Attach Cabinet (Rear) Assy to set.



Fit LCD Window (670) into the frame of Cabinet (Rear) Assy and attach it on LCD Cushion (670).

