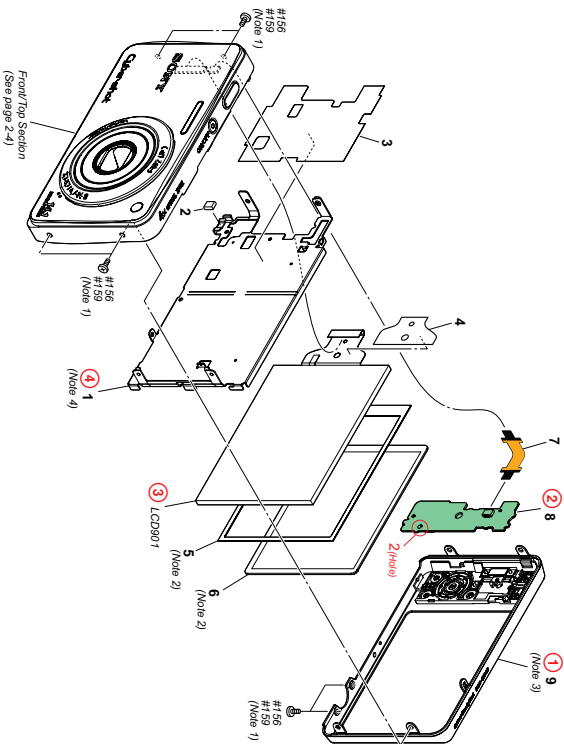


2-1. EXPLODED VIEWS

2-1-1. REAR SECTION



Ref. No.	Part No.	Description
* 1	4-167-590-01	FRAME (R90) MAIN (Note 4)
* 2	3-588-794-01	GASKET (280)
* 3	4-167-596-01	SHEET (R90), SYN INSULATING
4	4-168-192-01	SHEET (R90), LCD INSULATING

Ref. No.	Part No.	Description
6	4-167-598-01	WINDOW (R90), LCD (Note 2)
7	1-489-208-11	PPC-019 FLEXIBLE BOARD
8	A-1731-533-A	SW-56280CARD, COMPLETE
9	X-2541-644-1	CABINET (REAR) ASSY (R500) (Note 3)

DISASSEMBLY

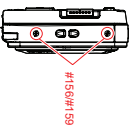
1. Remove to numerical order (1) to (4) in the left figure.

① #156#159 X 6

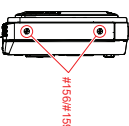
Bottom View



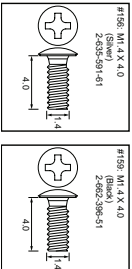
Left View



Right View



Screw



Note

Note 1

THE COMBINATION OF CABINET'S COLOR AND SCREW

The screw pointed (1) is different according to the cabinet's color. For the combination of cabinet's color and screw, please refer to Table 2-1.



Table 2-1

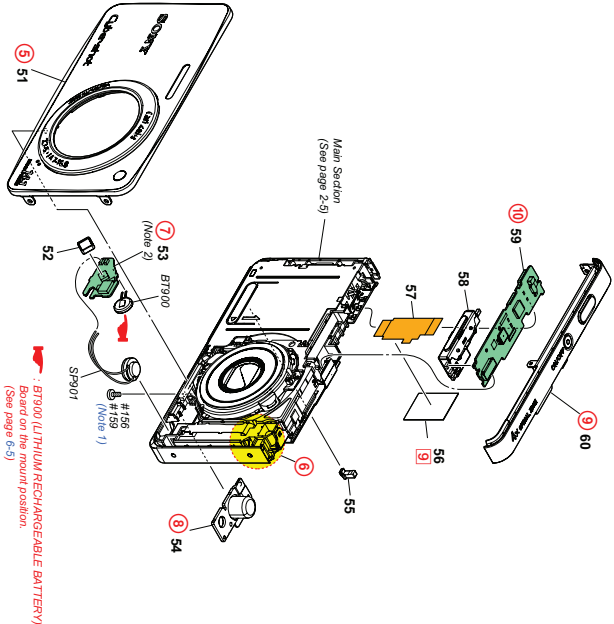
Screw's Ref. No. (Part's Color)	Cabinet's Color
#156 (Silver)	SILVER
#159 (Black)	BLACK

Note 2: Refer to "Assembly-6: Attaching Method of LCD cabinet (R90) and LCD window (R90)".

Note 3: Refer to "Assembly-5: Precaution During Cabinet (Rear) Assy Installation".

Note 4: Refer to "Assembly-4: Precaution During Main Frame Installation".

2-12. FRONT/ TOP SECTION



Ref.No.	PartNo.	Description	Ref.No.	PartNo.	Description
51	X-254-430-1	CABINET (FRONT) ASSY (650C) (SILVER)	56	4-168-315-01	TAPE (NS)
51	X-254-431-1	CABINET (FRONT) ASSY (650D) (BLACK)	57	1-489-206-11	FLASH UNIT
52	4-111-391-01	HOLDER, MICROPHONE	58	1-489-586-11	SPQ52 BOARD COMPLETE
53	4-173-544-4	SPQ52 BOARD COMPLETE (Note 2)	59	A-1131-542-A	BT900 BOARD COMPLETE
54	4-167-574-01	SCREEN (640), (MP50)	60	X-254-431-1	CABINET (UPPER) ASSY (650C) (SILVER)
55	4-167-594-01	LIGHT (640), (MS GUIDE)	60	X-254-433-1	CABINET (UPPER) ASSY (650D) (BLACK)

DISASSEMBLY

1. Remove to numerical order (8) to (9) in the left figure.

(8) #156 / #159 X 6

Bottom View

#156/#159

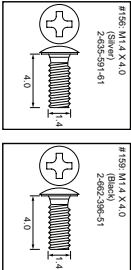


(9)

DISCHARGING OF THE CHARGING CAPACITOR

(9) Tape (N5) (13)

Screw



Note

Note 1

THE COMBINATION OF CABINET'S COLOR AND SCREW

The screw pointed (8) is different according to the cabinet's color. For the combination of cabinet's color and screw, please refer to table 2-1.

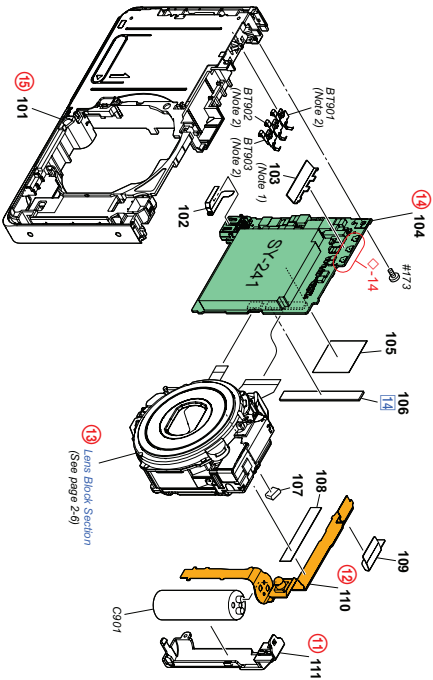


Table 2-1		
Screw's Ref. No. (Part's Color)	Cabinet's Color	
#156 (Silver)	SILVER	
#159 (Black)	BLACK	

Caution :
Danger of explosion if battery is incorrectly replaced.
Replace only with the same or equivalent type.
Dispose of used batteries according to the instructions.

Note 2: Refer to "Assembly-A Precaution During SPQ52 Board Installation".

2-1-3. MAIN SECTION



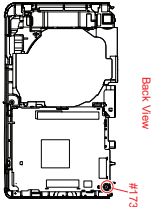
Ref. No.	Part No.	Description
101	X-234-42-1	CABINET ASSY (690C), CENTER (SILVER)
101	X-234-42-1	CABINET ASSY (690D), CENTER (BLACK)
102	4-167-570-01	SHEET METAL PROTECTION (MAIN 1)
103	4-1752-37-2A	SY241 BOARD, COMPLETE (SERVICE)
104	4-1752-37-2A	SY241 BOARD, COMPLETE (SERVICE)
105	4-167-589-01	SHEET METAL REINFORCEMENT
106	4-172-899-01	SHEET METAL REINFORCEMENT

Ref. No.	Part No.	Description
111	4-167-570-01	RETAINER (640), CAPACITOR
111	4-167-570-01	RETAINER (640), CAPACITOR
111	4-167-570-01	RETAINER (640), CAPACITOR
111	4-167-570-01	RETAINER (640), CAPACITOR
111	4-167-570-01	RETAINER (640), CAPACITOR
111	4-167-570-01	RETAINER (640), CAPACITOR
111	4-167-570-01	RETAINER (640), CAPACITOR
111	4-167-570-01	RETAINER (640), CAPACITOR
111	4-167-570-01	RETAINER (640), CAPACITOR
111	4-167-570-01	RETAINER (640), CAPACITOR

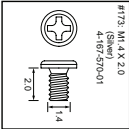
DISASSEMBLY

1. Remove to numerical order (1) to (9) in the left figure.
2. The meaning of the sign in left figure is as follows. Be careful when it removes.
◇-X: Solder

19 #73 X 1 → LCD REINFORCEMENT SHEET (14)



Screw



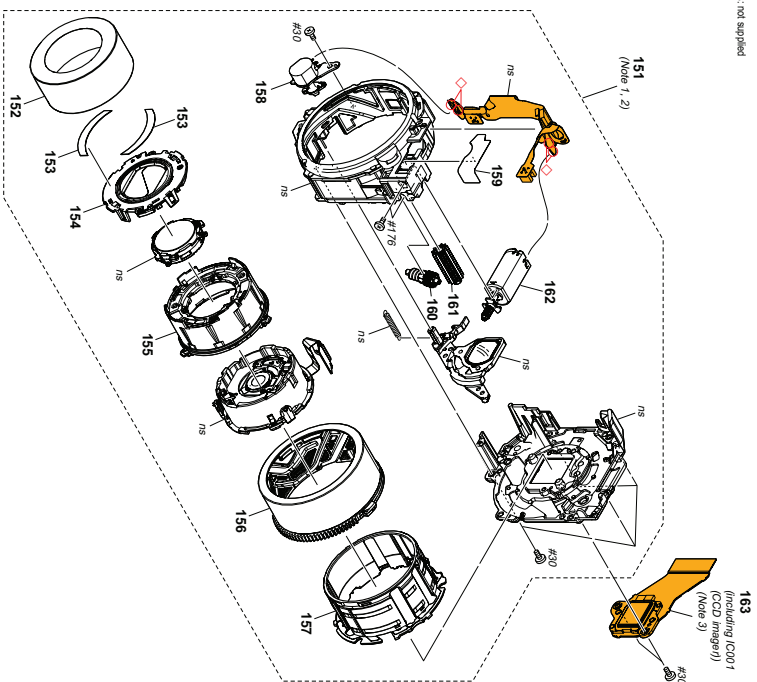
Note

Note 1: Refer to "Assembly-2: Insulating Sheet (670) Putting Position".

Note 2: Refer to "Assembly-1: Installation Method of Battery Terminal Board".

2-1-4. LENS BLOCK SECTION

ns: not supplied



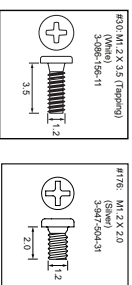
Ref. No.	Part No.	Description	Ref. No.	Part No.	Description
151	8-446-861-01	DEVICE LENS,51X180A (Note 1, 2)	161	A-1743-75-14	NAUTIG GEAR LUBRICATED ASSY
152	4-155-550-01	RINS A/S, 100MM L	162	A-1743-75-24	DO MOTOR WORK ASSY
153	4-47-109-01	BAR BARIER	163	A-173-547-14	CD-74 BOARD COMPLETE including I0001 (CCD image) (Note 3)
154	A-1743-71-14	BARBER ASSY			
155	4-147-091-01	FRONT 1 GROUP	#20	3-046-156-11	SCREW B1,2
156	A-1743-72-14	CAM TUBE BLOCK ASSY	#176	3-647-204-31	SCREW M1,2
157	A-1743-72-74	STRAIGHT TUBE LUBRICATED ASSY			

Ref. No.	Part No.	Description
161	A-1743-131-A	NARUTO GEAR LUBRICATED ASSY
162	A-1743-725-A	DC MOTOR W/ORA ASSY
163	A-1731-501-A	CD-774 BOARD COMPLETE (including IC0071 (COD image)) (Note 3)
#20	3-006-156-11	SCREW B12
#176	3-947-504-31	SCREW (M12)

DISASSEMBLY

1. The meaning of the sign in left figure is as follows. Be careful when it removes \diamond : Solder

Screw

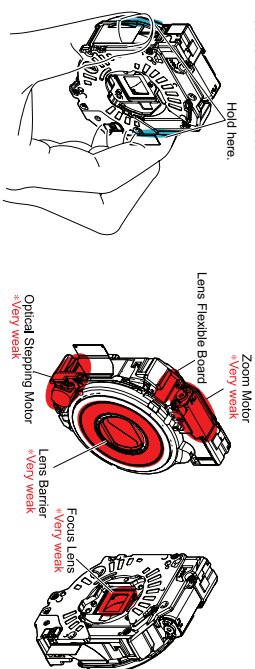


Note

Note 1

PRECAUTIONS WHEN HOLDING THE LENS BLOCK

- Hold the Lens Block at the center of both sides.
- Do not hold the following part.



Note 2: Refer to the following each item when you exchange parts of Lens Block.

- 1-6. ORNAMENTAL RING A OR BARRIER ASSY REPLACING METHOD (page 1-4)
- 1-7. OPTICAL STEPPING MOTOR (P1380) REPLACING METHOD (page 1-4)
- 1-8. DC MOTOR WORM ASSY REPLACING METHOD (page 1-5)
- 1-9. CAM TUBE FRAME ASSY AND STRAIGHT TUBE LUBRICATED ASSY AND 1 GROUP FRAME REPLACING METHOD (page 1-5)
- 1-10. FINAL INSPECTION (page 1-9)

Note 3: Be sure to read "Precautions for Replacement of Imager" on page 6-1 when changing the imager.

Checking supplied accessories.

Note: This item is supplied with the unit as an accessory,
but is not prepared as a service part.



Battery charger
(BC-CSM18C-CSM18)
△ 1-837-232-81 (CAN)
△ 1-837-232-81
(EXCEPT CND)



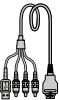
Rechargeable battery pack
(NP-SN1)
(Nad)



Power cord (main line)
△ 1-837-232-81 (UK, E (Small), HK)
△ 1-837-232-11 (AEP, E (EXCEPT Spain))
△ 1-837-232-81 (KR)
△ 1-837-232-11 (KOS)



Conversion (2) Adapter
△ 1-837-232-11
(E (Latin America))



USB A/V cable for
digital camcorder
1-837-238-11



- Instruction Manual
- 4-H6515-31 (ENGLISH, FRENCH)
 - 4-H6515-41 (ENGLISH, RUSSIAN, UKRAINIAN)
 - 4-H6515-51 (ENGLISH, POLISH, HUNGARIAN, ROMANIAN)
 - 4-H6515-51 PORTUGUESE, GERMAN, DUTCH, TURKISH, GREEK, POLISH, CZECH, HUNGARIAN, SLOVAK, SWEDISH, FINNISH, NORWEGIAN, DANISH, CROATIAN, ROMANIAN)
 - 4-H6515-61 SIMPLIFIED CHINESE, MALAY, INDO-NESEAN, THAI, ARABIC, PERSIAN)
 - 4-H6515-71 (ENGLISH, SPANISH, PORTUGUESE)
 - 4-H6515-81 (ENGLISH, SPANISH, PORTUGUESE, SIMPLIFIED CHINESE, INDO-NESEAN, ARABIC, PERSIAN)
 - 4-H6515-91 (ENGLISH, PORTUGUESE, SIMPLIFIED CHINESE, INDO-NESEAN, ARABIC, PERSIAN)
 - 4-H6515-11 (ENGLISH, ARABIC, PERSIAN)
 - 4-H6515-21 (ENGLISH, ARABIC, PERSIAN)



Wide strap
2-059-381-01 (Gray) (SLIVER)
2-059-381-11 (Black) (BLACK)



CD-ROM
(Operation application software /
Operation handbook /
Operation step-up Guide)
4-H62-396-01



Operation handbook (PDF)

The CD-ROM supplied contains all of language versions of
the operation handbook (operation handbook) for printing.
• The printed matter is not supplied. (If required,
please order it with the part number below.

- 4-H62-397-11 (JAPANESE)
- 4-H62-397-21 (FRENCH)
- 4-H62-397-31 (ITALIAN)
- 4-H62-397-41 (GERMAN)
- 4-H62-397-51 (PORTUGUESE)
- 4-H62-397-61 (GERMAN)
- 4-H62-397-71 (DUTCH)
- 4-H62-397-81 (SPANISH, CHINESE)
- 4-H62-397-91 (SIMPLIFIED CHINESE)
- 4-H62-398-01 (PERSIAN)
- 4-H62-398-11 (GREEK)
- 4-H62-398-21 (INDONESIAN)
- 4-H62-398-31 (TURKISH)
- 4-H62-398-41 (ARABIC)
- 4-H62-398-51 (RUSSIAN)
- 4-H62-398-61 (UKRAINIAN)
- 4-H62-398-71 (POLISH)
- 4-H62-398-81 (SLOVAK)
- 4-H62-398-91 (SWEDISH)
- 4-H62-399-01 (NORWEGIAN)
- 4-H62-399-11 (DANISH)
- 4-H62-399-21 (FINNISH)
- 4-H62-399-31 (CROATIAN)
- 4-H62-399-41 (ROMANIAN)
- 4-H62-399-51 (MALAY)
- 4-H62-399-61 (THAI)
- 4-H62-399-71 (SIMPLIFIED CHINESE)
- 4-H62-399-81 (INDONESIAN)
- 4-H62-399-91 (ARABIC)
- 4-H62-399-11 (PERSIAN)
- 4-H62-399-21 (GREEK)

2.2. ELECTRICAL PARTS LIST

Ref.No.	PartNo.	Description
	A-1731-5416-A	AF-125 FLEXIBLE BOARD, COMPLETE
	*****	*****
(0202 is not supplied, but this is included in AF-125 flexible complete board.)		
		< DIODE >

D202 (Not supplied) DIODE SC54HJ07B6
(0202 is supplied including in AF-125 flexible complete board.)

1-480-206-11 FPC-016 FLEXIBLE BOARD

1-480-206-11 FPC-019 FLEXIBLE BOARD

A-1731-5414-A SP-052 BOARD, COMPLETE

(BT900 LITHIUM BATTERY) is not included in SP-052 complete board.)

< BATTERY >

△ BT900 1-756-710-12 LITHIUM RECHARGEABLE BATTERY

< CAPACITOR >

C001 1-125-777-11 CERAMIC CHIP 0.1uF 10%

< CONNECTOR >

CN002 1-616-654-61 FPC/FPC CONNECTOR (LIF) 6P

< MICROPHONE >

MC001 1-542-776-21 MICROPHONE

< RESISTOR >

R003 1-218-945-11 METAL CHIP 220 5%

A-1731-5412-A ST-225 BOARD, COMPLETE

< CAPACITOR >

C002 1-142-146-11 CERAMIC CHIP 1.1uF 10%

C003 1-142-146-51 CERAMIC CHIP 22uF 20%

△ C005 1-116-456-11 CERAMIC CHIP 0.007uF 10%

△ C006 1-164-450-11 CERAMIC CHIP 100uF 0.5uF

△ C008 1-100-761-21 CERAMIC CHIP 0.01uF 10%

< CONNECTOR >

* CN001 1-617-628-81 CONNECTOR FPC (ZIF) 26P

* CN006 1-622-914-11 CONNECTOR FPC (LIF) (NON-ZIF)

Ref.No. PartNo. Description

Caution
Danger of explosion if battery is incorrectly replaced.
Replace only with the same type and capacity.
Dispose of used batteries according to the instructions.

Please refer to LEVEL 3 about the ELECTRICAL PARTS LIST of
CD-774 and SY-241.

△ * 0002 6-552-459-01 TR T61602EEB-TL-H
< TRANSISTOR >

< RESISTOR >

△ R003 1-218-121-11 METAL CHIP 1M 5%

R004 1-218-826-11 METAL CHIP 1M 5%

R005 1-218-826-11 METAL CHIP 10 5%

R006 1-218-697-11 METAL CHIP 100K 5%

R007 1-218-948-11 METAL CHIP 380 5%

< SWITCH >

* S001 1-786-136-21 TACTILE SWITCH

* S002 1-786-914-31 SWITCH, TACTILE

< TRANSFORMER >

△ * T001 1-445-774-11 D.C.-D.C. CONVERTER TRANSFORMER

A-1731-5316-A SW-562 BOARD, COMPLETE

< CONNECTOR >

* CN001 1-621-867-51 CONNECTOR FPC (LIF) (NON-ZIF)

< RESISTOR >

R002 1-218-957-11 METAL CHIP 2.2K 5%

< COMPOSITION CIRCUIT BLOCK >

RES. NETWORK 2.2K (1005XA)

RES. NETWORK 2.2K (1005XA)

< SWITCH >

* S001 1-786-914-31 SWITCH, TACTILE

* S002 1-786-914-31 SWITCH, TACTILE

* S003 1-786-914-31 SWITCH, TACTILE

* S004 1-786-914-31 SWITCH, TACTILE

* S005 1-786-914-31 SWITCH, TACTILE

* S006 1-786-914-31 SWITCH, TACTILE

* S007 1-786-914-31 SWITCH, TACTILE

* S008 1-786-914-31 SWITCH, TACTILE

* S009 1-786-914-31 SWITCH, TACTILE

* S010 1-786-947-11 SIGNAL SELECTOR SWITCH

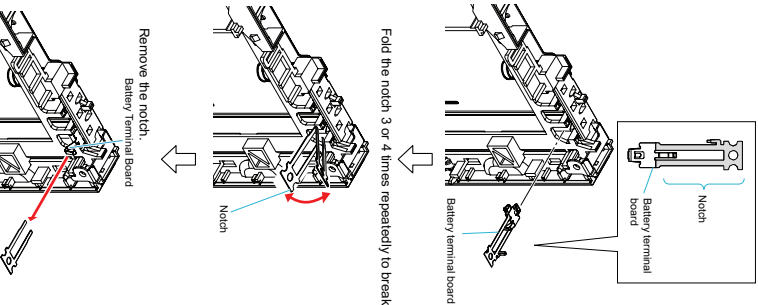
* S011 1-786-914-31 SWITCH, TACTILE

3. ASSEMBLY

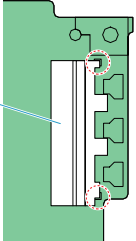
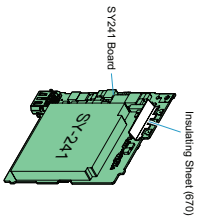
Assembly-1: Installation Method of Battery Terminal Board

Remove the battery terminal board by bending the claw of rock portion.
When assembling the battery terminal board, replace it with new one because battery terminal board will be bent.

Insert the battery terminal board into a slit in B1 holder to install.
Battery terminal board is attached with notch for installation.

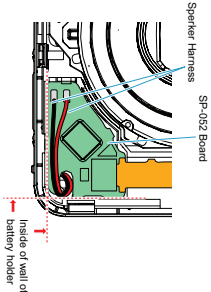


Assembly-2: Insulating Sheet (670) Putting Position

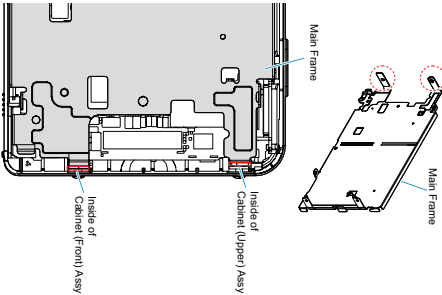


Assembly-3: Precaution During SP-052 Board Installation.

Route the speaker harness as shown below.

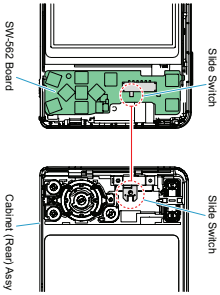


Assembly-4: Precaution During Main Frame Installation.



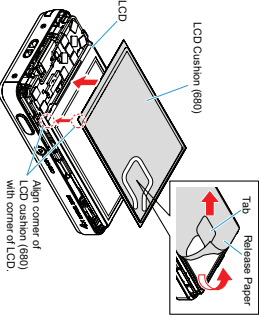
Assembly-5: Precaution During Cabinet (Rear) Assy Installation.

Align the slide switch of Cabinet (Rear) Assy with the slide switch of SW-562 Board.

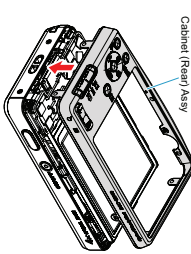


Assembly-6: Attaching Method of LCD Cushion (680), LCD Window (680)

Apply LCD cushion (680).
And have the tab of the Release Paper and peel it off.



Attach Cabinet (Rear) Assy to set.



Fit LCD Window (680) into the frame of Cabinet (Rear) Assy and attach it on LCD Cushion (680).

