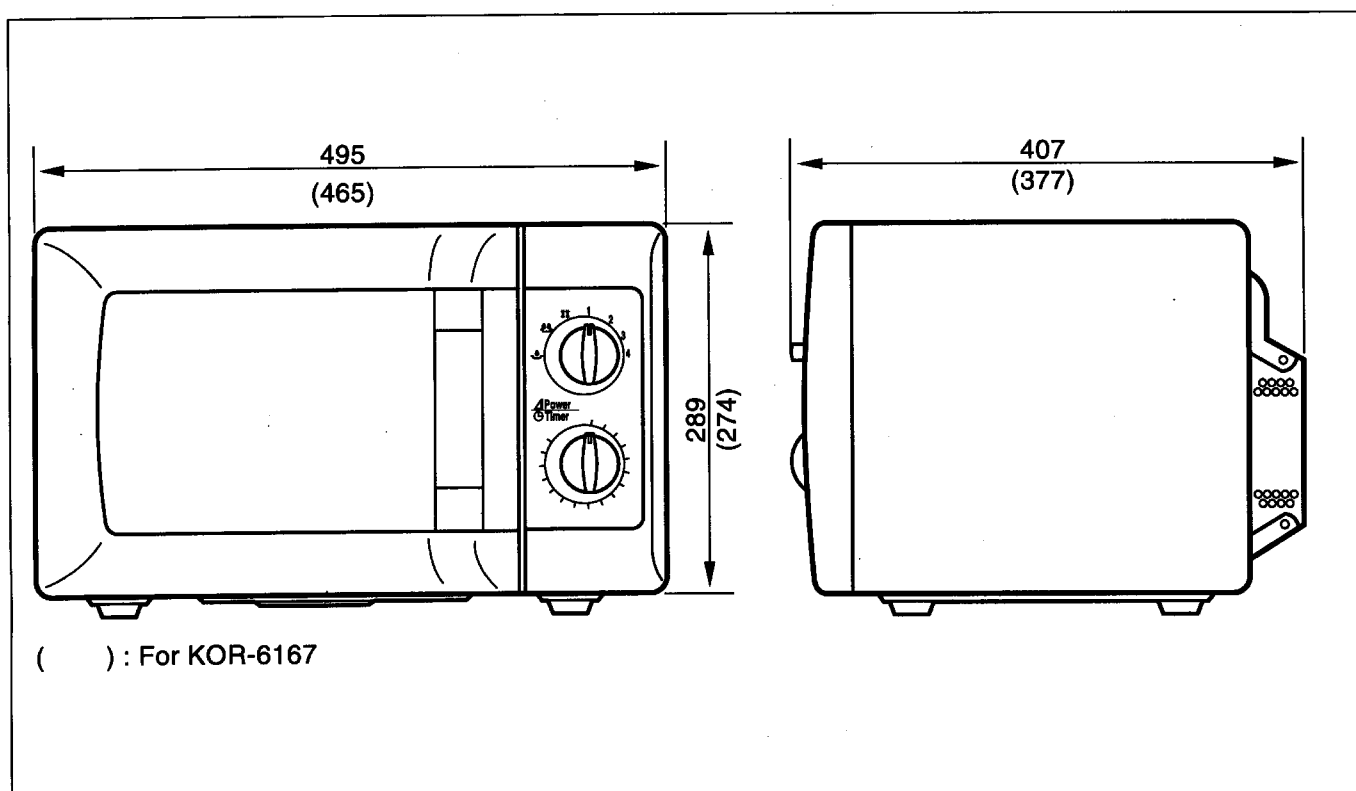


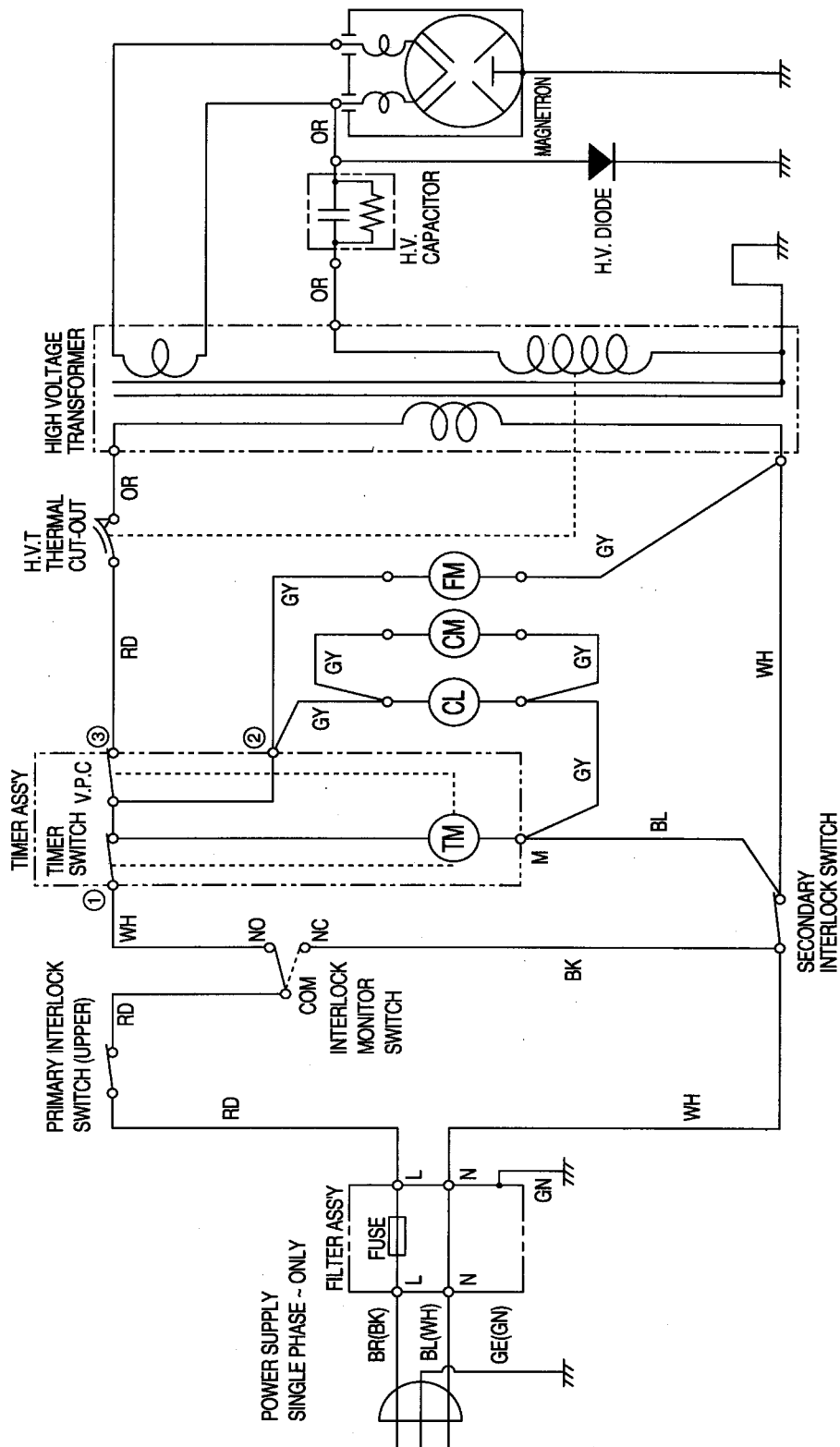
SPECIFICATIONS

Model		KOR-8167	KOR-6167
Power Supply		230V ~ 50Hz, SINGLE PHASE WITH EARTHING	
MICROWAVE	POWER CONSUMPTION	1350 W	1200W
	OUTPUT POWER(IEC 705)	900 W	800W
	FREQUENCY	2450 MHz	
OUTSIDE DIMENSIONS (W x H x D)		495 x 289 x 407 mm	465 x 274 x 377 mm
CAVITY DIMENSIONS (W x H x D)		320x 225 x 330 mm	290x 200 x 290 mm
NET WEIGHT		APROX. 15.0Kg	APROX. 13.5Kg
TIMER		35 min. DUAL SPEED	
POWER SELECTIONS		7 LEVELS	
CAVITY VOLUME		0.84 Cu.Ft.	0.61 Cu.Ft.

* Specifications subject to change without notice.



WIRING DIAGRAM



NOTE; RD : RED
WH : WHITE
BK : BLACK
GN : GREEN
BR : BROW

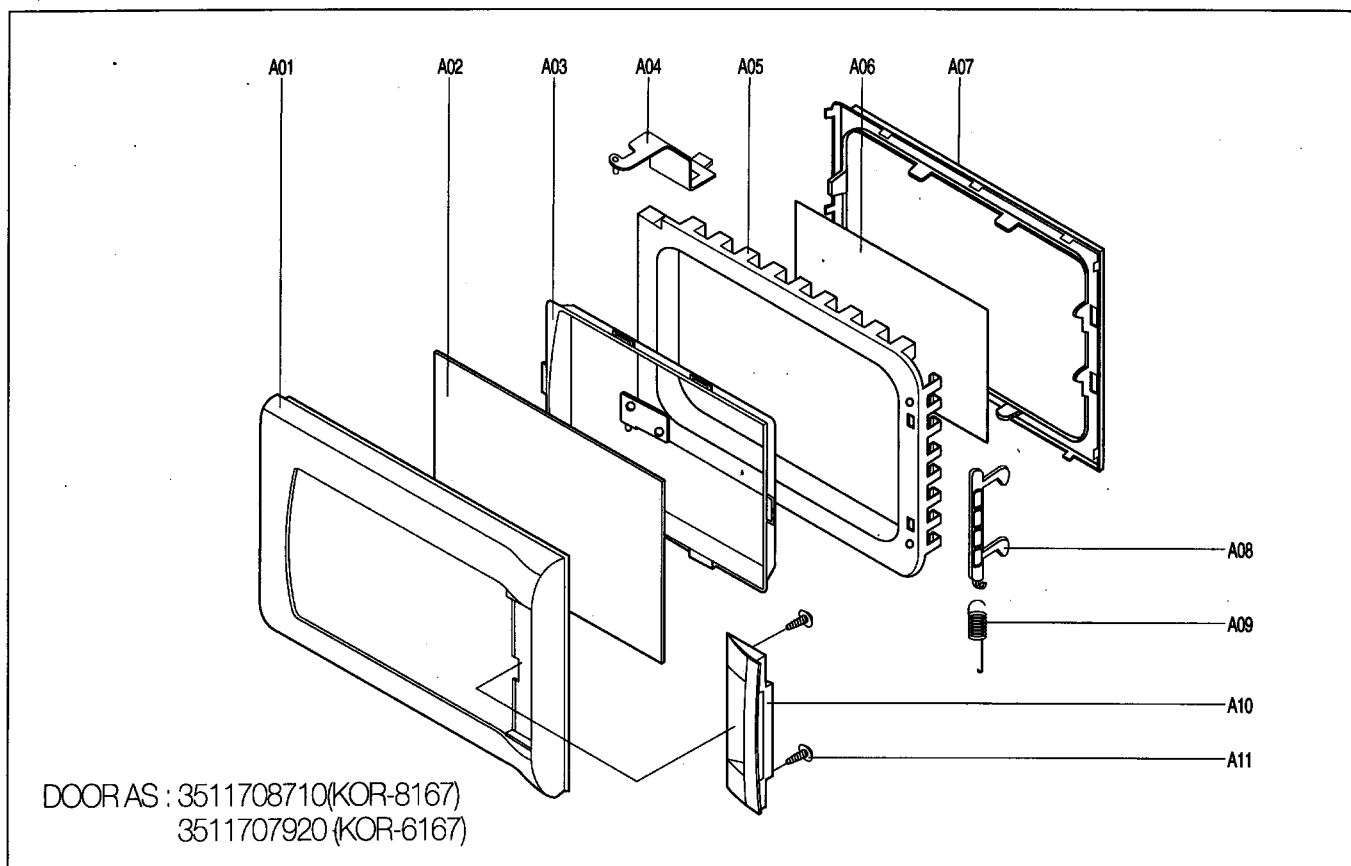
OR : ORANGE
BL : BLUE
GY : GRAY
GE : GREEN/YELLOW

CL : CAVITY LAMP
FM : FAN(BLOWER) MOTOR
GM : GEARED MOTOR
TM : TIMER MOTOR
V.P.C. : VARIABLE POWER CONTROLLER

(CONDITION)
DOOR : CLOSED
TIMER : ON
V.P.C. : HIGH

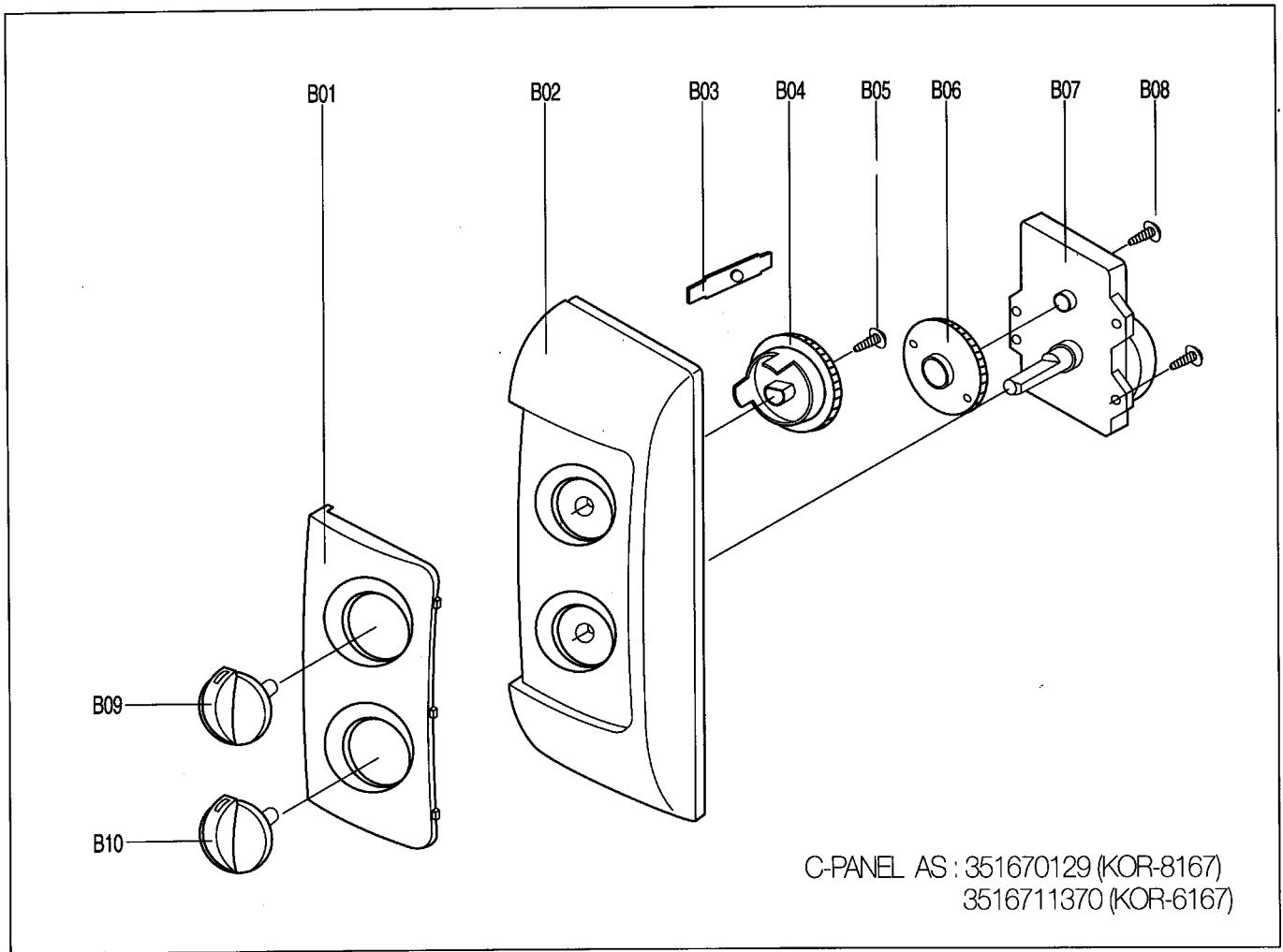
EXPLODED AND PARTS LIST

1. Door Assembly



REF NO.	PART NAME	PART CODE	DESCRIPTION	Q'TY	REMARK
A01	FRAME DOOR	3512202220	ABS	1	KOR-8167
		3512202020			KOR-6167
A02	BARRIER-SCREEN * O	3517003140	ACRYLE 1.5T	1	KOR-8167
		3517003040			KOR-6167
A03	SUPPORTER BARRI-S * O	3515304400	ABS	1	KOR-8167
		3515704600			KOR-6167
A04	STOPPER HINGE * T AS	3515201500	KOR-61150S	1	
A05	DOOR PAINTING AS	3511706500	KOR-81150S	1	KOR-8167
		3511706100	KOR-61150S		KOR-6167
A06	BARRIER-SCREEN * I	3517002900	PE 0.1T	1	KOR-8167
		3517002800			KOR-6167
A07	GASKET DOOR	3512300400	PP	1	KOR-8167
		3512300200			KOR-6167
A08	HOOK	3513100710	POM	1	
A09	SPRING HOOK	3515101500	PW1	1	
A10	HANDLE DOOR	3512601200	ABS	1	KOR-8167
		3512601300			KOR-6167
A11	SCREW TAPPING	7S341W40B1	T2S PAN 4x12 PW MFZN	2	

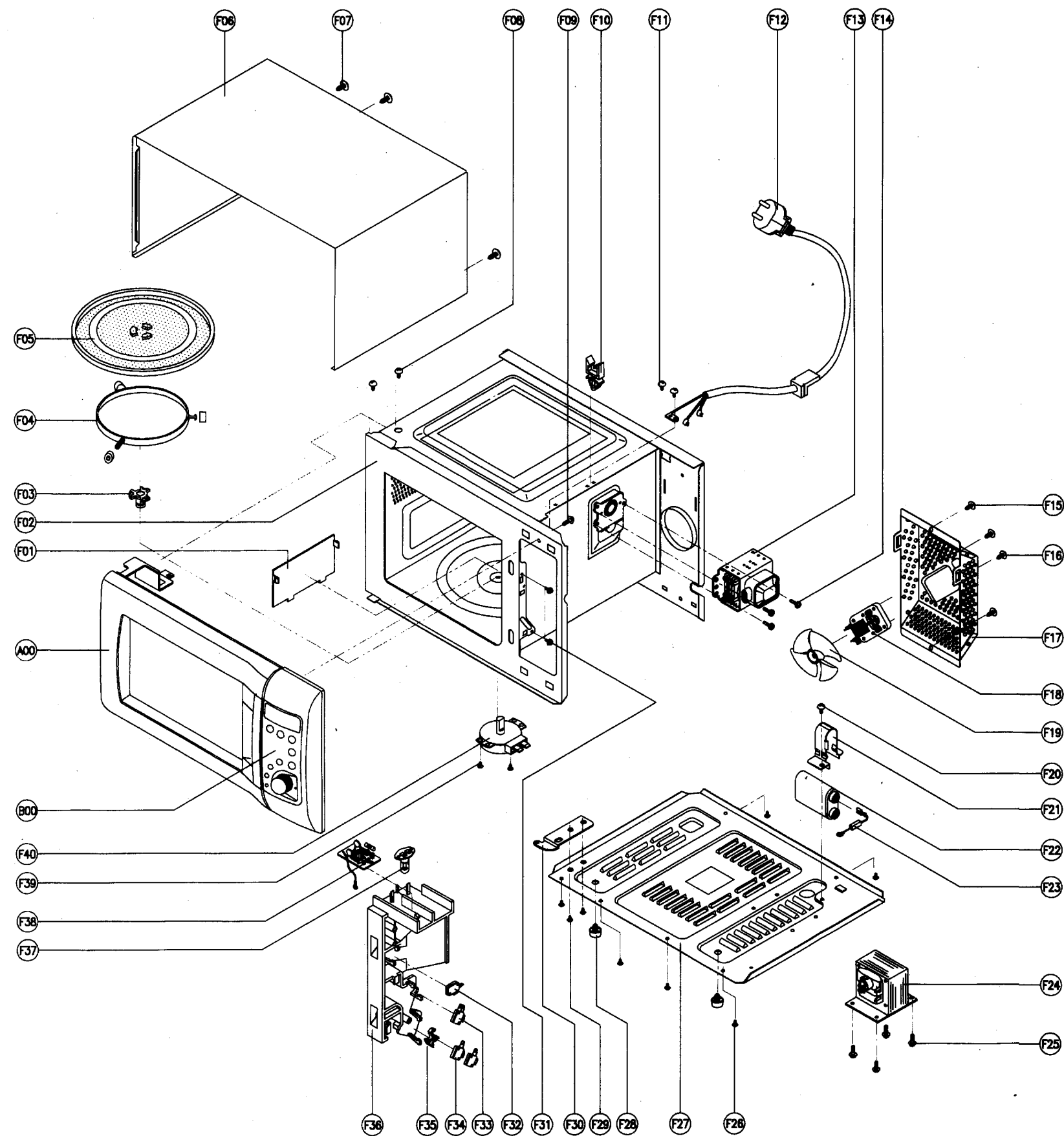
2. Control Panel Ass'Y



REF NO.	PART NAME	PART CODE	DESCRIPTION	Q'TY	REMARK
B01	DECORATOR C-PANEL	3511602110	ABS	1	KOR-8167
		3511602310			KOR-6167
B02	C-PANEL	3516710120	ABS	1	KOR-8167
		3516709830			KOR-6167
B03	SPRING FLAT	3515101600	SUS301 T0.5	1	
B04	COUPLER VPC KNOB	3517400510	POM	1	
B05	SCREW TAPPING	7S341W4OB1	T2S PAN 4x12 PW MFZN	1	
B06	COUPLER TIMER	3517400400	POM	1	
B07	TIMER	3518203800	KN35MKD	1	
B08	SCREW TAPPING	7S341W4OB1	T2S PAN 4x12 PW MFZN	2	
B09	KNOB VPC	3513402650	ABS	1	
B10	KNOB	3513402550	ABS	1	

✓ **Caution:** In this Service Manual, some parts can be changed for improving, their performance without notice in the parts list. So, if you need the latest parts information, please refer to PPL(Parts Price List) in Service information Center(<http://svc.dwe.co.kr>)

3. Main unit



REF NO	PART NAME	PART CODE	DESCRIPTION	Q'TY	REMARK
F01	COVER WAVE GUIDE	3511403200	PP	1	
F02	CAVITY AS	3516105600	KOR-81150S	1	KOR-8167
		3516104800	KOR-61150S	1	KOR-6167
F03	COUPLER	3517400600	PPS	1	
F04	GUID ROLLER AS	3512510600	KOR-61150S	1	
F05	TRAY	3517203500	GLASS	1	KOR-8167
		3517203600			KOR-6167
F06	CABINET	3510801400	PCM T0.6	1	KOR-8167
		3510801300			KOR-6167
F07	SCREW SPECIAL	7S312X40A1	T1 TRS 4X10 SE MFZN	3	
F08	SCREW SPECIAL	7S427W40A1	TT2 HEX FG 4X10 SE MFZN	2	
F09	SCREW SPECIAL	7S341W40B1	T2S PAN FG 4X12 PW SE MFZN	1	
F10	CLAMP POWER AS	4413A90012	NYLON 66	1	
F11	SCREW SPECIAL	7S422X4081	TT2 TRS 4X8 SE MFZN	3	
F12	CORD POWER AS	35113AAQ95	3X0.75 60X60 120-RTML	1	
F13	MAGNETRON	3518002200	2M218H(MF) I	1	
F14	SCREW SPECIAL	7S327U40A1	T2 FG 4X10 PW SE MFZN	3	
F15	SCREW SPECIAL	7S312X40A1	T1 TRS 4X10 PW SE MFZN	2	
F16	SCREW MACHINE	7S101W4081	PAN FLANGE 4X10 MFZN	2	
F17	COVER * B	3511402500	SBHG T0.8	1	
F18	MOTOR SHADED POLE	3963512100	MW10CA-R01	1	
F19	FAN	3511800300	PP + 30% GLASS	1	
F20	SCREW SPECIAL	7S422X4081	TT2 TRS 4X8 SE MFZN	1	
F21	HOLDER HV CAPACITOR	3513001900	SECC T0.8	1	
F22	CAPACITOR HV	4415T66300	2100VAC, 0.98μF	1	KOR-8167
		441U667020	2100VAC, 0.95μF		KOR-6167
F23	DIODE HV	4416V24000	HVR-1X-32B	1	
F24	TRANS HV	3518106520	DW-N90S0-81T	1	KOR-8167
		3518106210	JY-N80S0-61T		KOR-6167
F25	SCREW SPECIAL	7S427W40A1	TT2 HEX FG 4X10 SE MFZN	4	
F26	SCREW SPECIAL	7S312X40A1	T1 TRS 4X10 SE MFZN	6	
F27	BASE	3510308900	SBHG T0.8	1	KOR-8167
		3510308700			KOR-6167
F28	FOOT	3512100900	PP DASF -130	2	
F29	SCREW SPECIAL	7S422X4081	TT2 TRS 4X8 SE MFZN	2	
F30	STOPPER HINGE * U	3515201100	SCP-1 T2.5	1	
F31	SCREW SPECIAL	7S341W40B1	T2S PAN 4X12 SE MFZN	2	
F32	SW MICRO	4415A17352	VP-533A-OF	1	
F33	SW MICRO	4415A66910	VP-531A-OF	1	
F34	SW MICRO	4415A17352	VP-533A-OF	1	
F35	LEVER LOCK	3513701300	POM	1	
F36	LOCK	3513805710	POM	1	
F37	LAMP	3513601600	BL 240V 25W T25	1	
F38	NOISE-FILTER	3518603500	DWLF-I	1	
F39	SCREW TAPPING	7121400811	T2S PAN 4X8 MFZN	2	
F40	MOTOR SYNCRO	3966310100	GM-16-24FD12	1	
B00	CONTROL-PANEL AS	3516710120	KOR-81670S	1	KOR-8167
		3516711370	KOR-61670S		KOR-6167
A00	DOOR AS	3511708710	KOR-816T0S	1	KOR-8167
		3511707920	KOR-616T0S		KOR-6167

✓ **Caution:** In this Service Manual, some parts can be changed for improving, their performance without notice in the parts list. So, if you need the latest parts information, please refer to PPL(Parts Price List) in Service information Center(<http://svc.dwe.co.kr>)