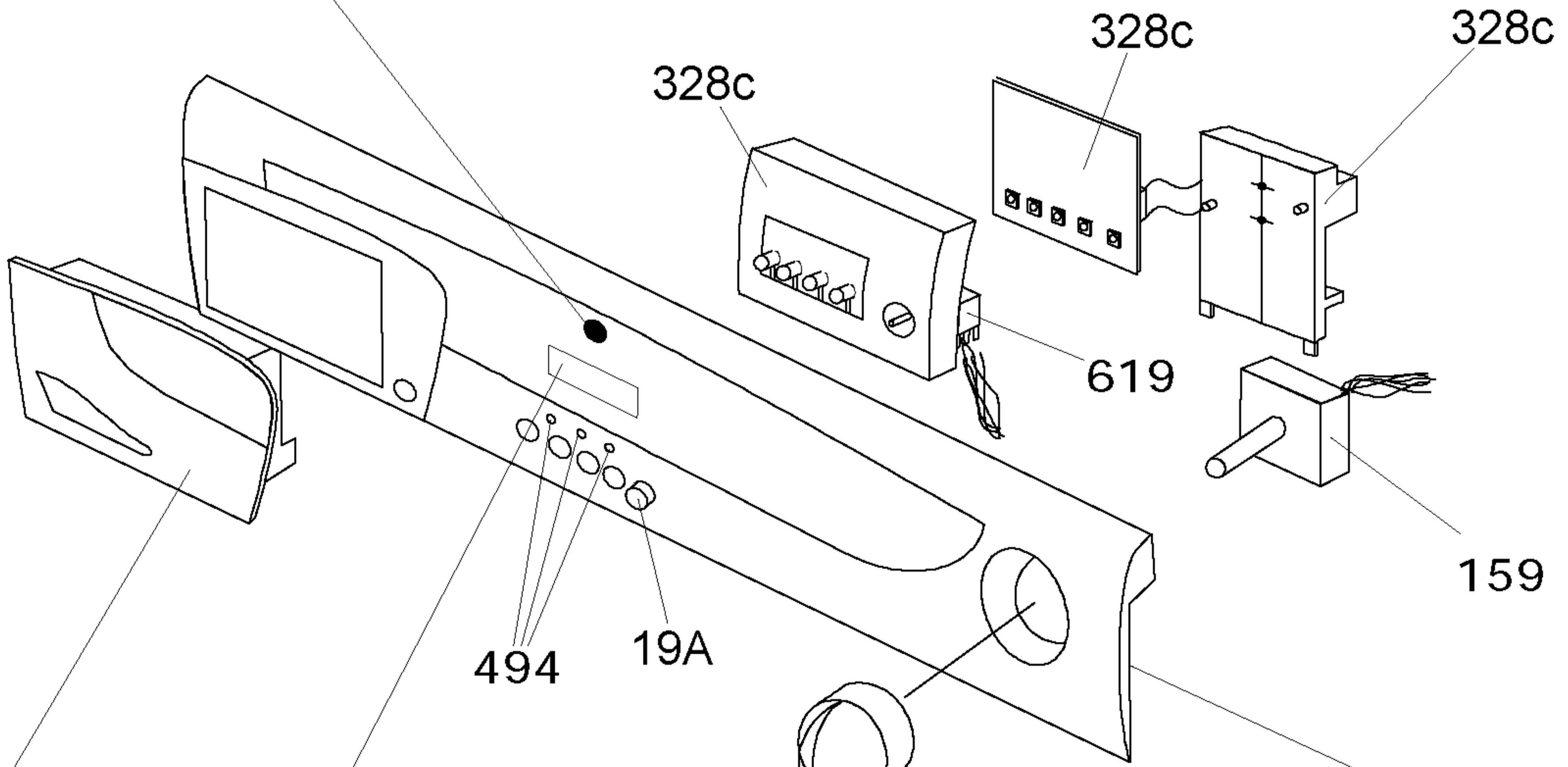


49G / 825A  
/ 1068

766



32

25

494

19A

328c

328c

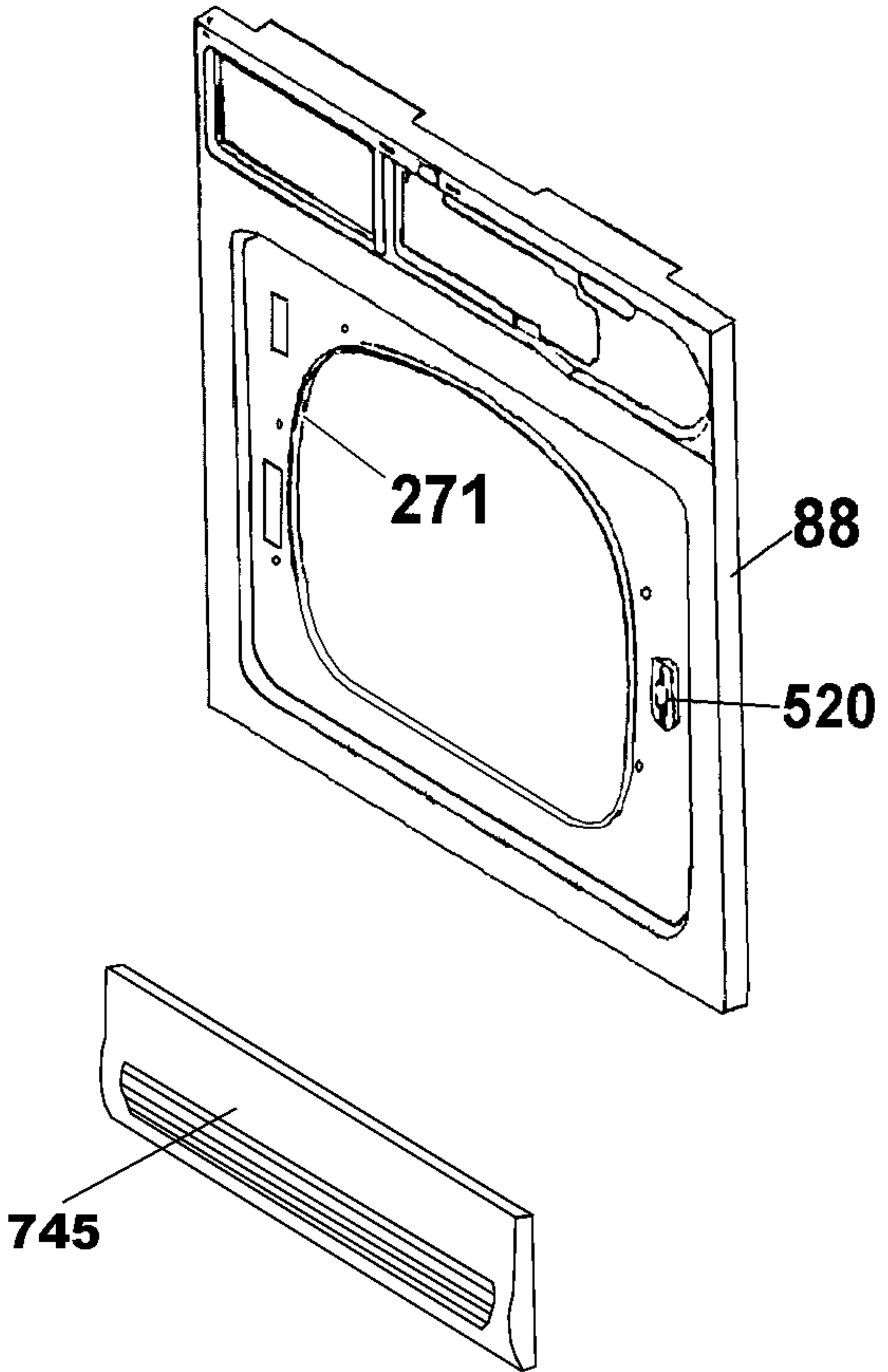
328c

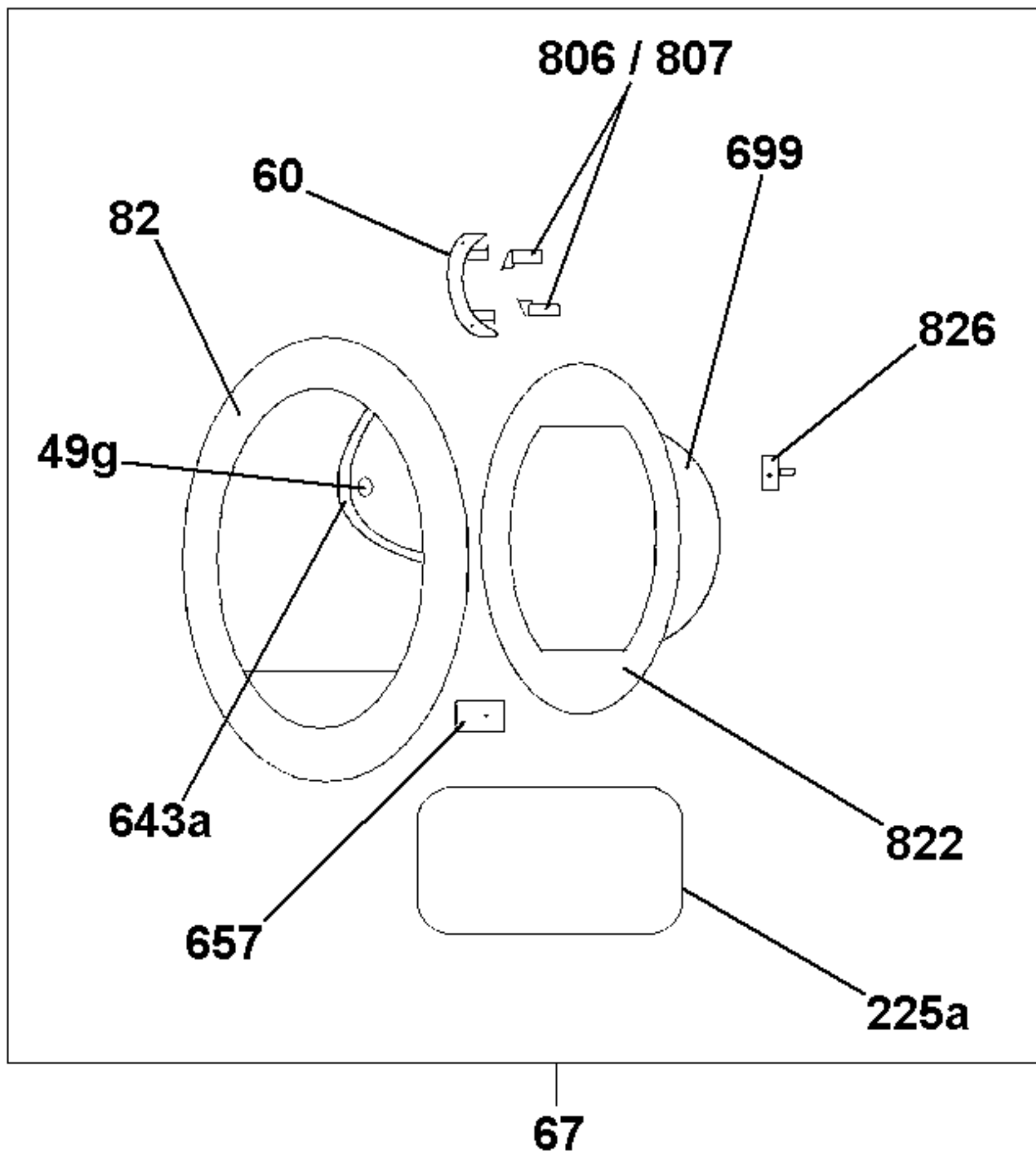
619

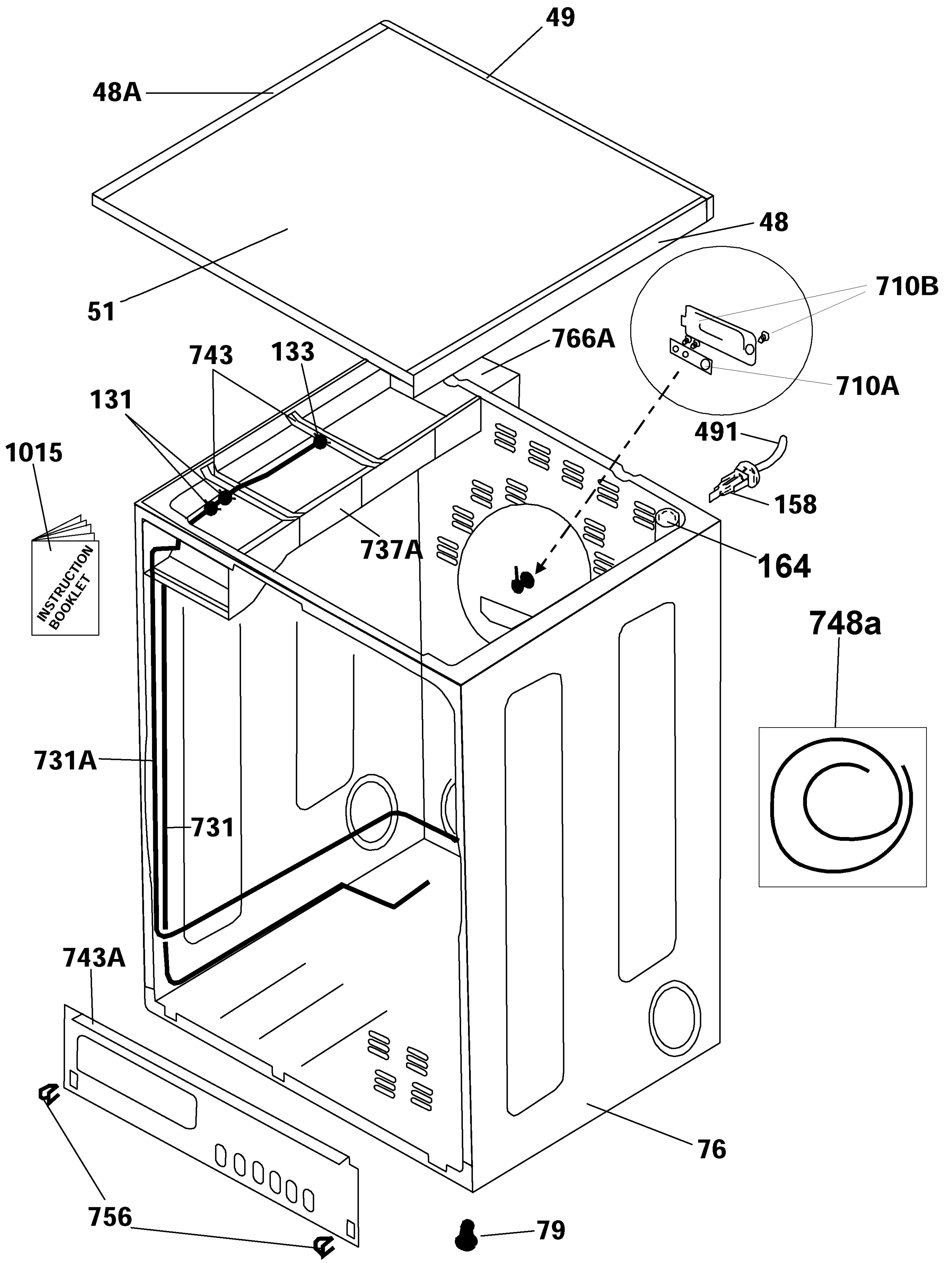
159

31

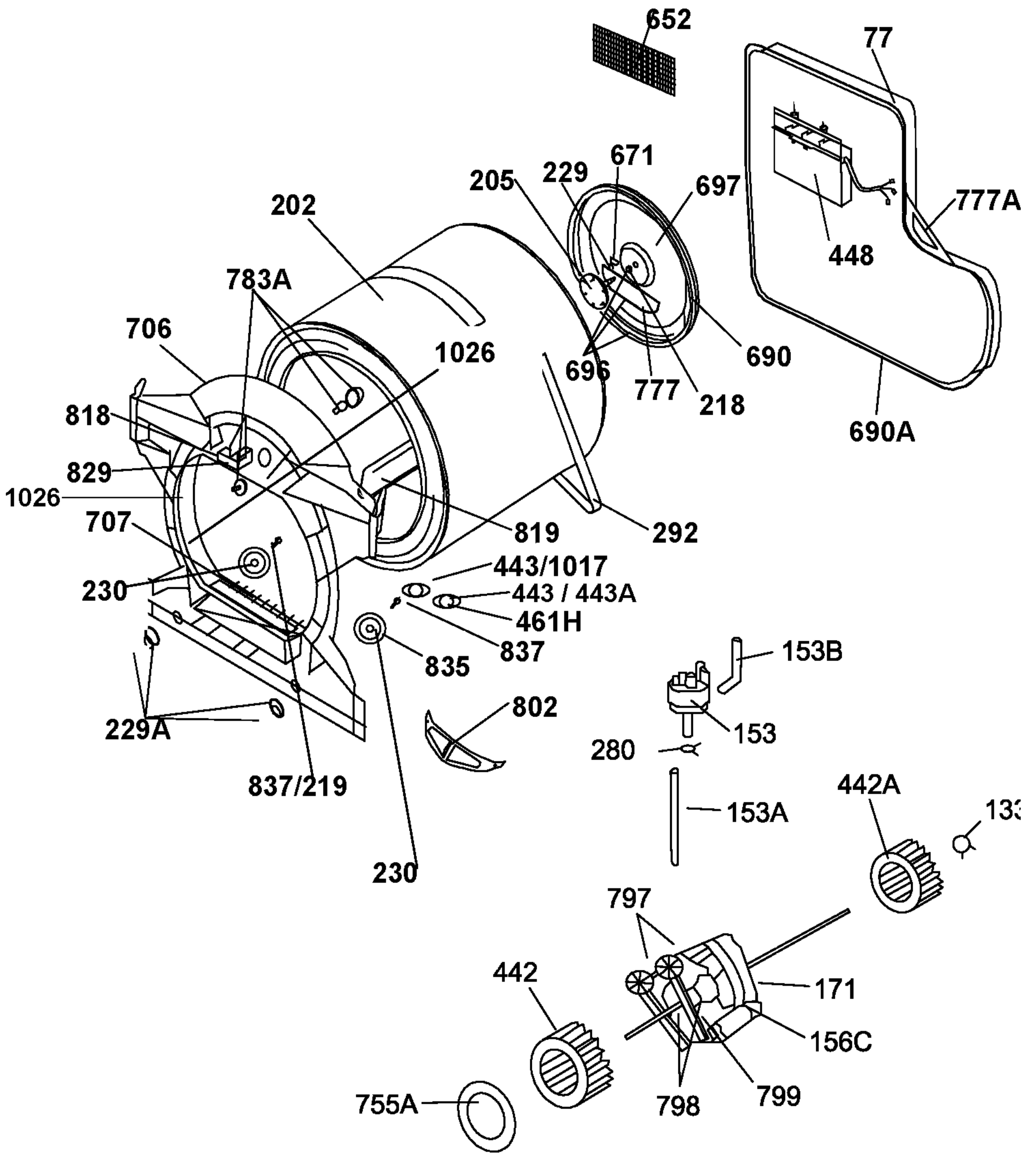
14A





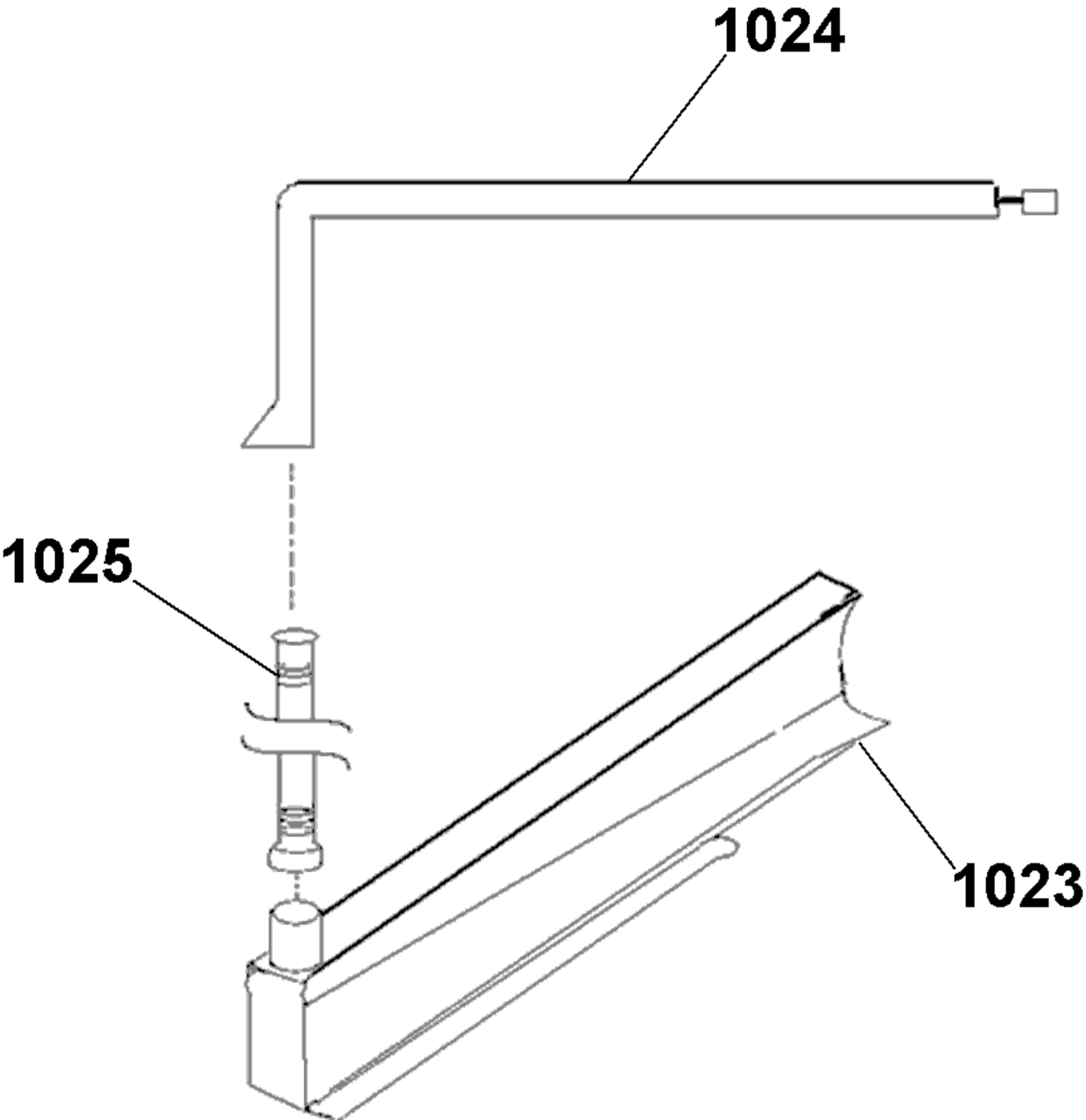


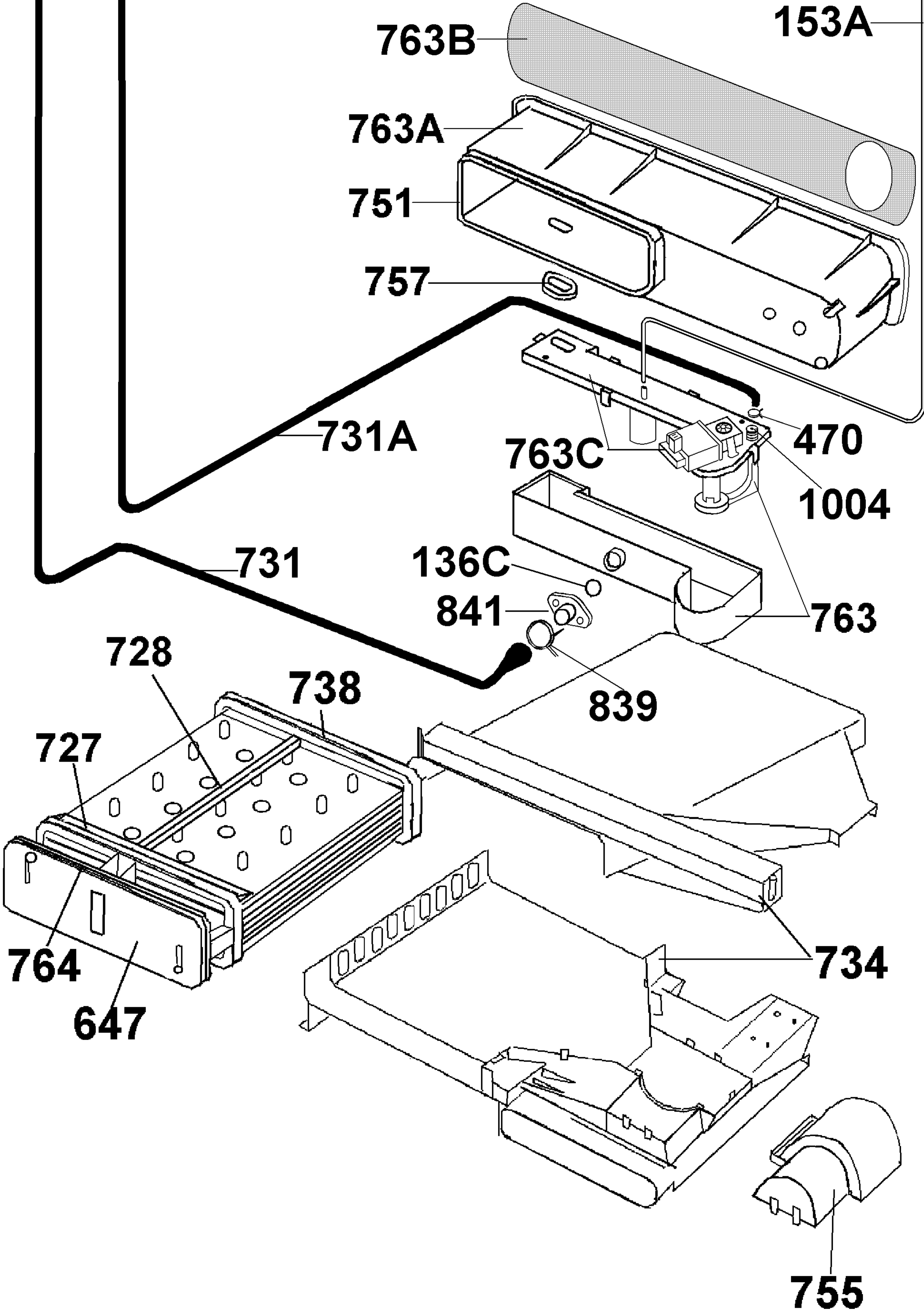
**CONDENSER CABINET**

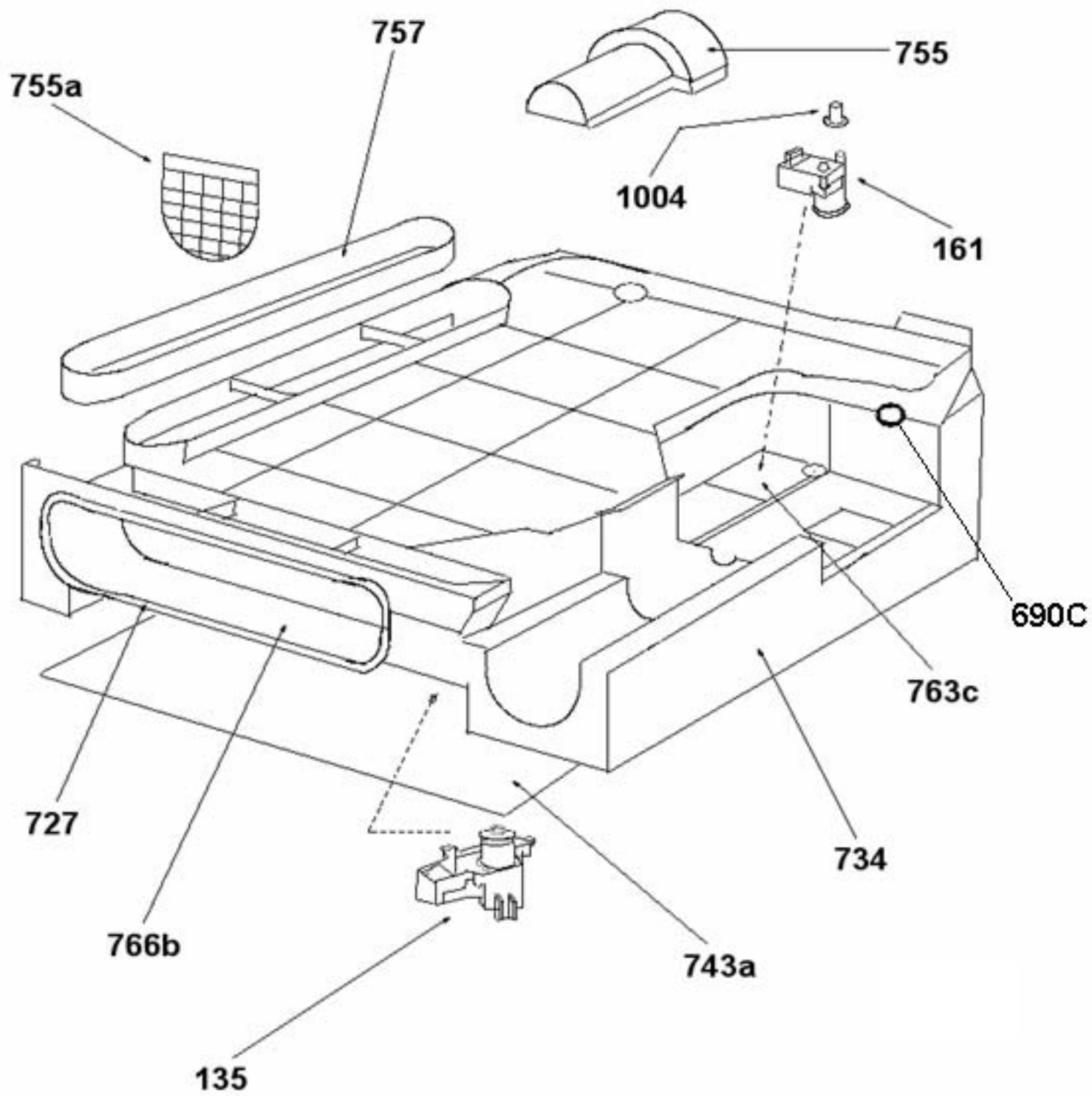


**DRUM ASSY - CONDENSER**

# 'B' CLASS DUCT ASSEMBLY









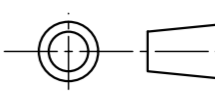
Sans titre

0014a 40004880 MANETTE  
0019a 40005130 TOUCHE M/A  
0031 40005240 TABLEAU DE BORD  
0032 40005150 FACADE  
0048 41019260 ENJOLIVEUR DROIT  
0048a 41019261 ENJOLIVEUR GAUCHE  
0049 40004597 ENJ. ARRIERE TOP  
0049g 91617795 SIGLE DE LA MARQUE ###  
0051 40004601 TOP  
0060 40005025 CHARNIERE  
0067 40005225 HUBLOT COMPLET  
0076 40005017 CARCASSE  
0077 40004062 PANNEAU ARRIERE  
0079 40002885 PIED  
0082 40005226 PANNEAU PORTE  
0088 40005140 PANNEAU AVANT  
0131 92470020 COLLIER  
0133 92470012 COLLIER  
0153 28375043 PRESSOSTAT  
0157 40004894 CABLAGE  
0159 41009471 SELECTEUR 12 POSITIONS  
0161 40005021 POMPE VIDANGE  
0164 91200489 ANTI PARASITES  
0171 40005004 MOTEUR  
0202 40002637 TAMBOUR  
0205 09200336 ARBRE PANIER  
0218 03210179 ROULEMENT  
0219 21446068 VIS  
0225a 03870715 JOINT CONDUIT ARRIERE  
0229 97911424 CIRCLIP  
0230 40004306 CIRCLIP  
0271 40005393 JOINT PORTE  
0292 40001012 COURROIE 1930H POLY V  
0328c 40005146 ENS. PLATINE  
0442 40004669 HELICE AIR FROID  
0442a 40001069 HELICE AIR CHAUD  
0448 40004316 RESISTANCE  
0461h 41014595 JOINT SONDE  
0473a 40005160 PANNEAU INFERIEUR  
0491 91200194 CABLE ALIMENTATION  
0494a 40004884 VOYANT ORANGE  
0494c 40004883 VOYANT JAUNE  
0520 40004092 SERRURE  
0619 41006591 INTER BIPOLAIRE NO  
0643a 41021708 ENJOLIVEUR  
0647 40004812 CONDENSEUR  
0671 03610428 SUPPORT PALIER  
0690 40003167 JOINT FEUTRE ARRIERE  
0690a 40004577 JOINT CARTER  
0690c 40003436 JOINT MOTEUR/CONDUIT EAU  
0696 40003227 ENS. PLAQUE SUP. FEUTRE PAL  
0697 40003226 PLAQUE SUP. RESISTANCE  
0699 40005026 PORTE  
0706 40005018 ENS. ANNEAU AVANT  
0707 40004311 FILTRE  
0710b 09200346 COUVERCLE  
0731 40004936 TUBE  
0731a 40004937 DURITE DE REFLUX  
0734 40004805 RESERVOIR  
0737a 40002777 RESERVOIR  
0745 40005233 GRILLE CONDENSEUR  
0748a 40004717 KIT VIDANGE  
0755 40004808 COUVERCLE  
0755a 40004809 GRILLE  
0756 23715194 CLIP SUPPORT PLINTHE  
0757 40003315 JOINT  
0763b 40003319 JOINT CONDUIT ARRIERE  
0763c 40005020 SUPPORT POMPE

Sans titre

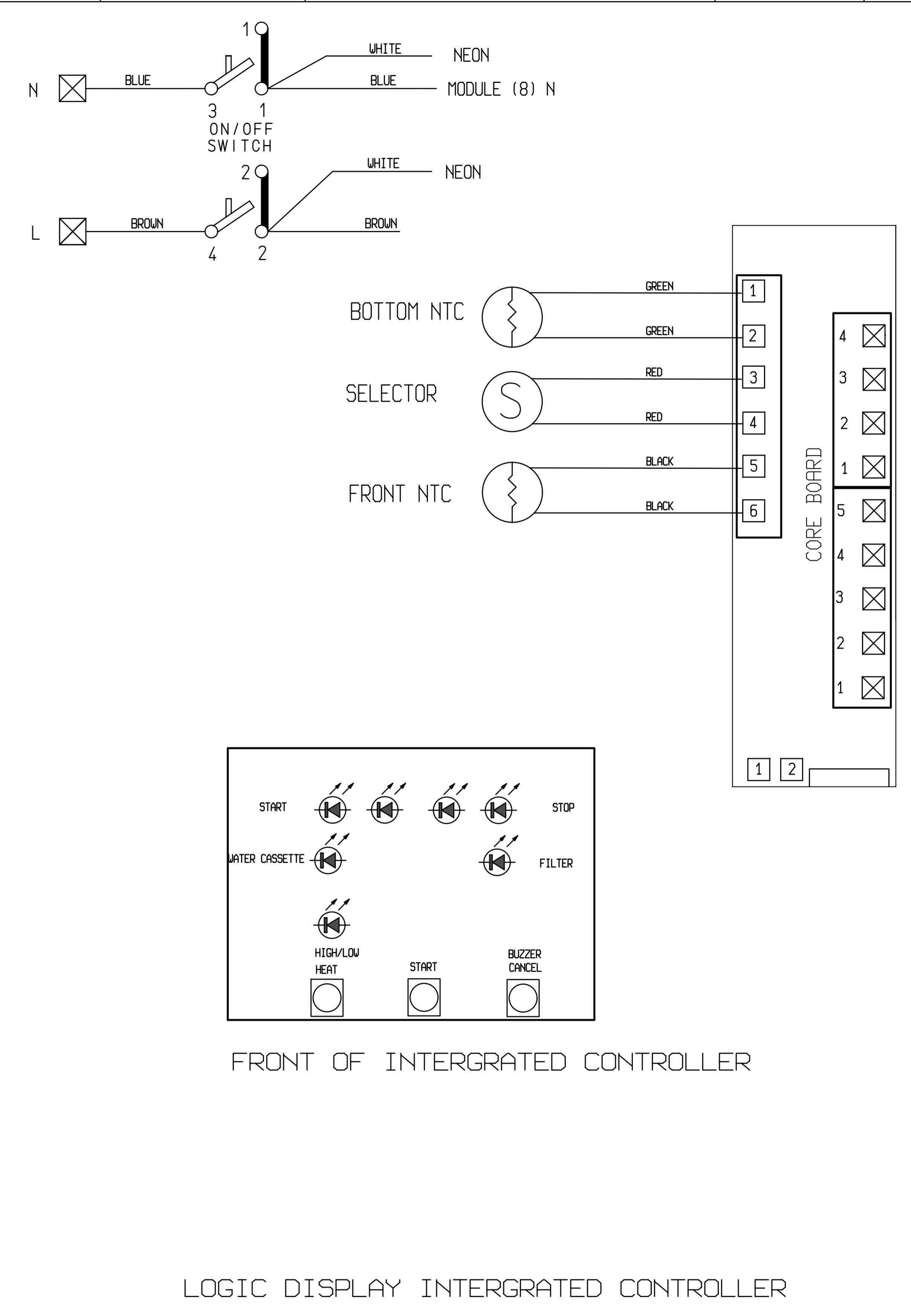
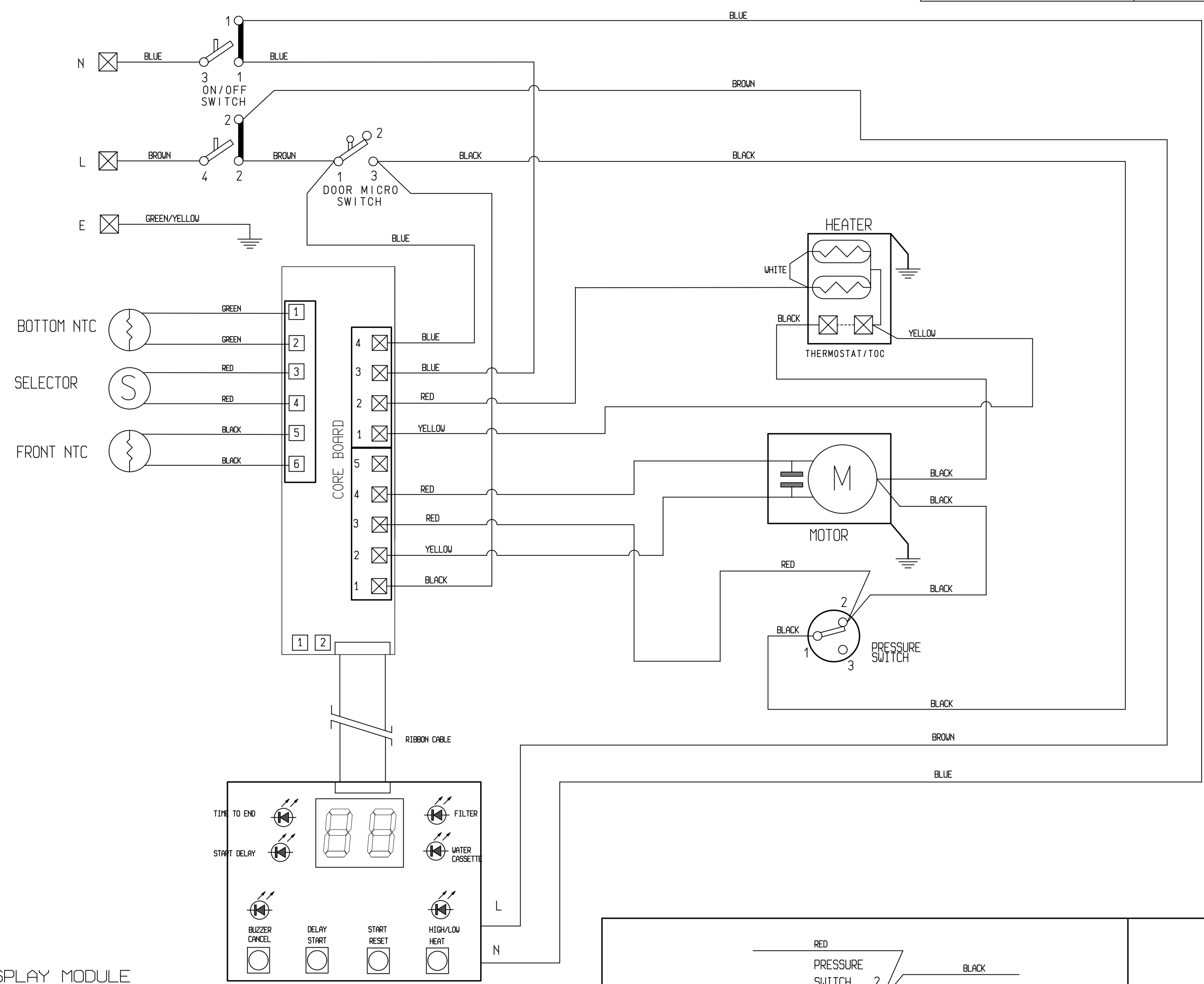
0766 40004578 CASSETTE RECUP EAU  
0766a 40002785 COUVERCLE AR CASSETTE  
0766b 40004928 FACADE  
0777 40004157 JOINT RESISTANCE  
0777a 03870777 JOINT RESISTANCE  
0797 40004610 GALET TENDEUR+SUPPORT  
0799 40001026 RESSORT TENDEUR COURROIE  
0806 41013810 CHARNIERE SUPERIEURE  
0807 41013811 CHARNIERE INFERIEURE  
0819 40003247 KIT AUBES  
0822 40005029 CONTRE-PORTE  
0826 40004091 CROCHET PORTE  
0835 40004307 GALET SUPPORT TAMBOUR X1  
1004 40005153 LIMITEUR DE REFLUX  
1017 40003258 THERMOSTAT  
1023 40004929 CONDUIT AIR FROID  
1026 40004946 FEUTRE AVANT

COPYRIGHT AND CONFIDENTIAL PROPERTY OF HOOVER LTD.

PROJECTION 

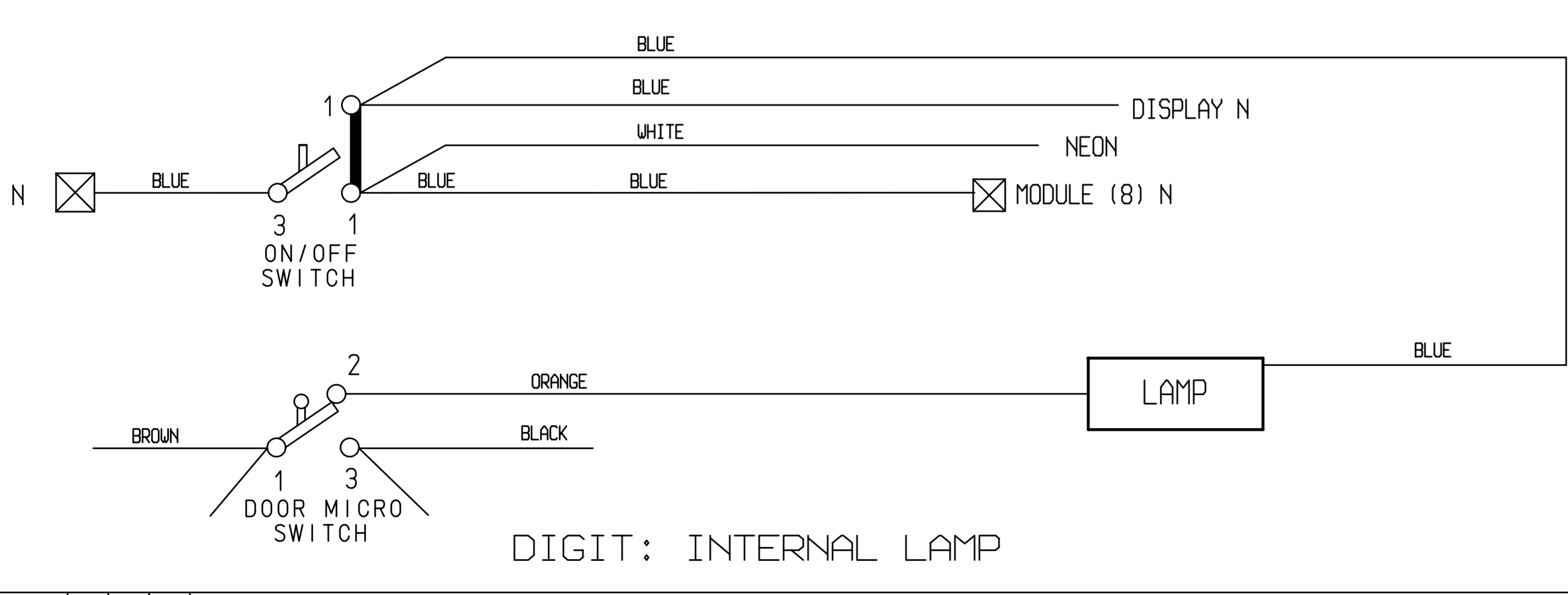
UNLESS OTHERWISE SPECIFIED ANGLES AND PERPENDICULARITY 1:1, BUT OF ROUNDNESS, PARALLELISM AND FLATNESS SHALL BE CONSIDERED AS INCLUDED IN THE TOLERANCE FOR SIZE. GEOMETRIC TOLERANCES ARE IN ACCORDANCE WITH B.S. 388 PART 3.

INTERCHANGEABLE WITH \_\_\_\_\_ EXCEPT FOR \_\_\_\_\_

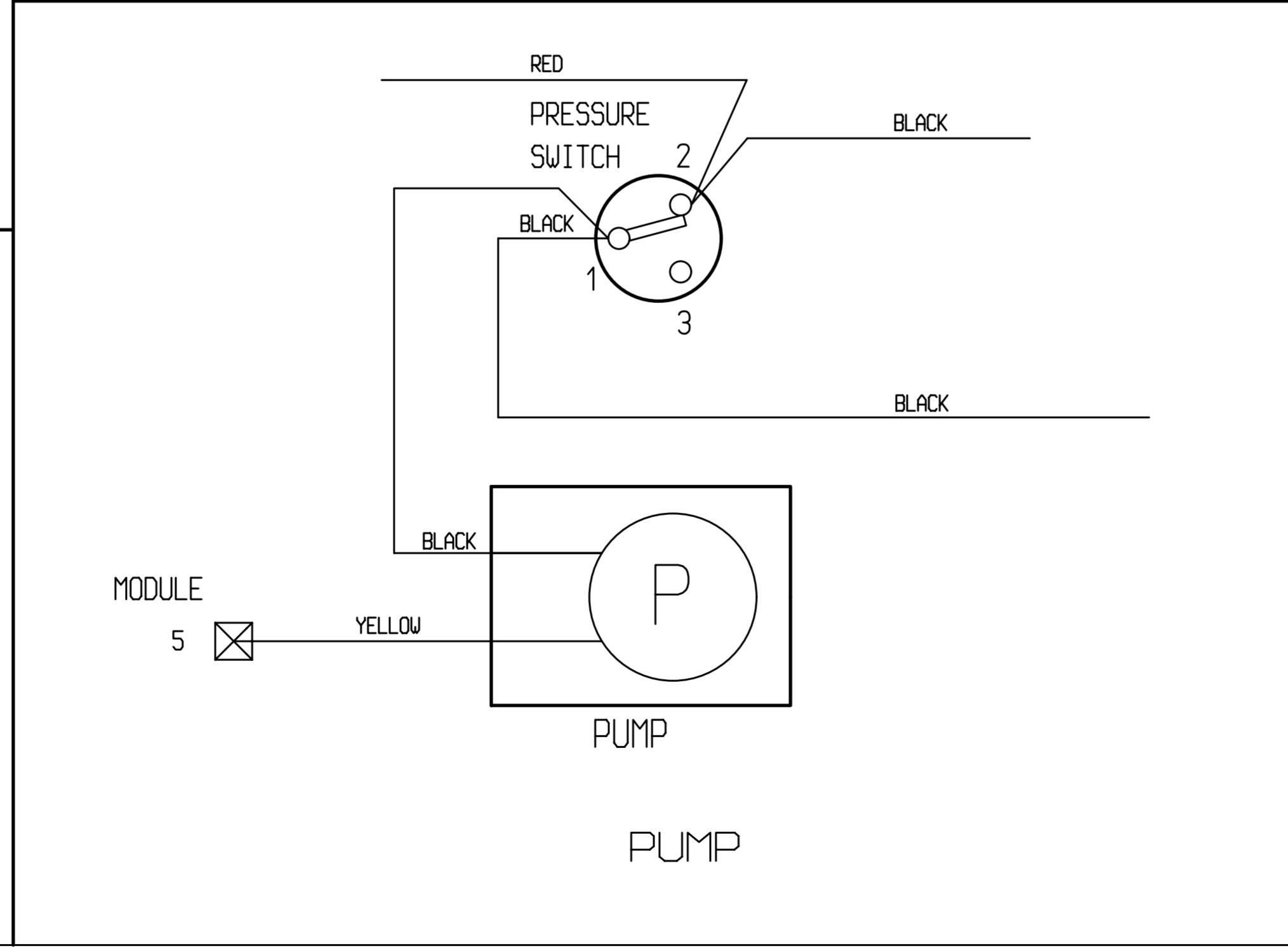


DIGIT DISPLAY MODULE

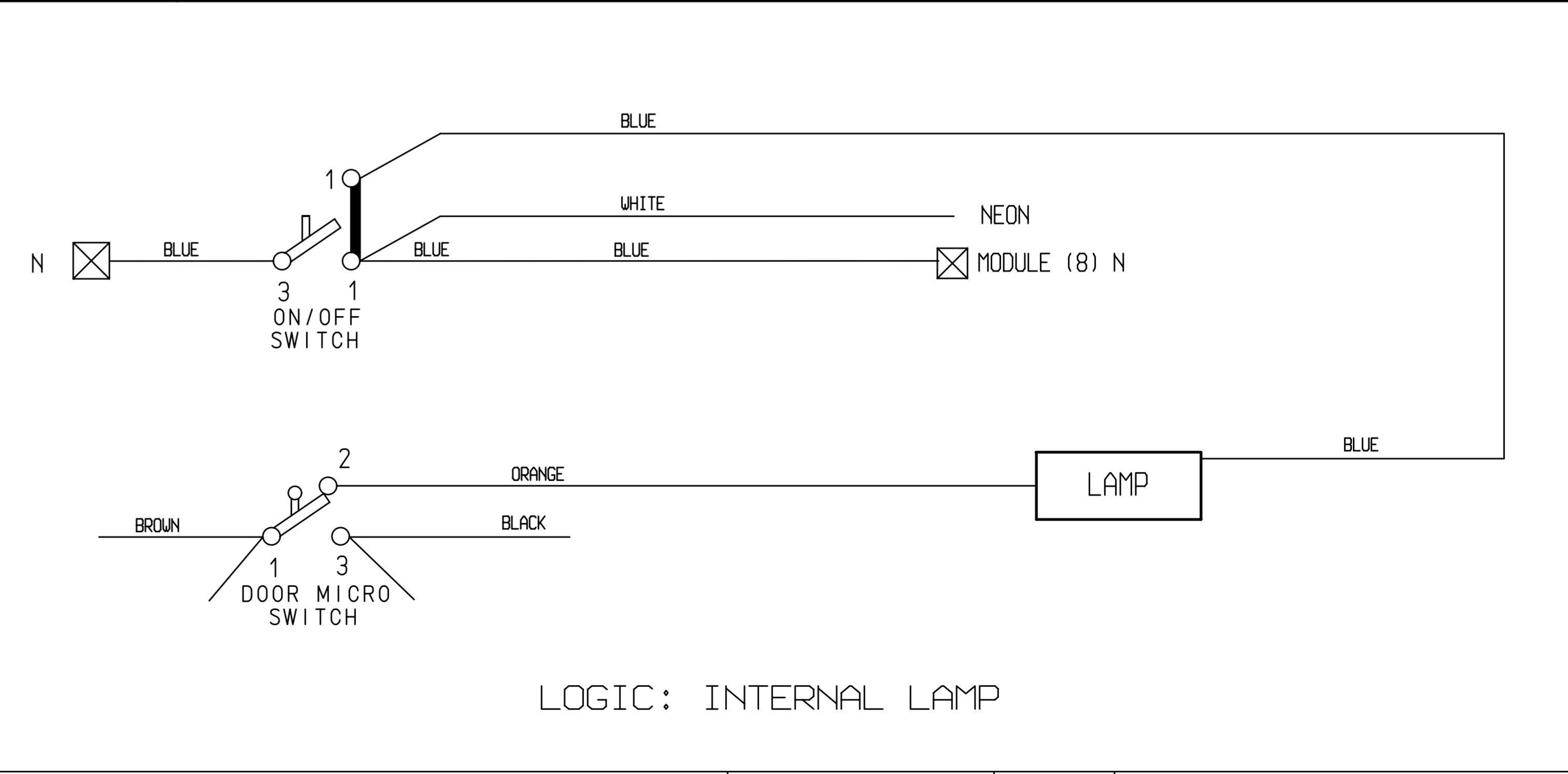
LOGIC DISPLAY INTEGRATED CONTROLLER



DIGIT: INTERNAL LAMP




PUMP



LOGIC: INTERNAL LAMP

CAD DRAWING DO NOT CHANGE MANUALLY  
 NO. DR. BY: N.D.C. DATE: 08 JUN 2005  
 00 CR 80006

SHEET 1 CARRIES THE CHANGE AND ISSUE No. FOR ALL SHEETS OF THIS DRAWING.

ALL DIMENSIONS ARE IN M.M. AND AFTER FINISHING			MATERIAL FINISH	
ELECTRONIC CONDENSER TD WIRING DIAGRAM				
EMER. No.	0000-0000	SCALE 1:1	D.C. W	D 40003101
INITIALLY INTRODUCED FOR MODEL	00000			