



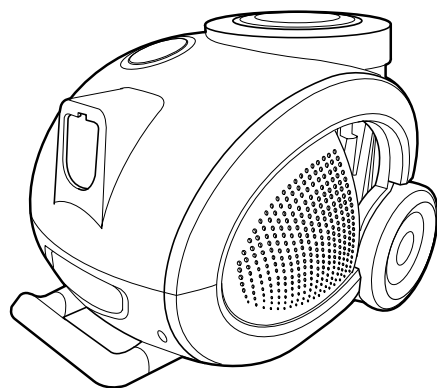
Website <http://biz.lgservice.com>

# VACUUM CLEANER **SERVICE MANUAL**

**MODEL : V-KC701HTR**

## CAUTION

BEFORE SERVICING THE UNIT, READ THE  
"SAFETY PRECAUTIONS" IN THIS MANUAL.



P/No. : 3828FI5917L

September. 2006  
Printed in Korea

# CONTENTS

---

**SAFETY PRECAUTIONS .....3**

**CAUTIONS .....3**

**DESCRIPTION .....4**

**SPECIFICATIONS.....4**

**DISASSEMBLY .....5~6**

**TROUBLE SHOOTING GUIDE.....7~9**

**SCHEMATIC DIAGRAM .....10**

**CIRCUIT DIAGRAM .....11**

**EXPLODED VIEW .....12~15**

**REPLACEMENT PARTS LIST.....16~17**

# SAFETY PRECAUTIONS

---

**BEFORE OPERATING THIS VACUUM CLEANER, READ THIS SERVICE MANUAL THOROUGHLY, AND OBSERVE EACH POINT CAREFULLY.**

## **1. Motor filter(Air Cleaner)**

- 1) This filter is reusable.
- 2) Never use the vacuum cleaner without filter.  
It may damage the motor.
- 3) When the light of body is on, wash the motor filter with water.
- 4) Even if the light is not on, wash the motor filter at least once 6 months.

**NOTE :** Reusing of the motor filter.

- Never wash the filter in a washing machine or in a dishwasher.
- Never use hot water for washing the filter.
- Reuse the filter after drying it completely in the shade for a day.
- Do not dry near fire or direct sunray.

## **2. Exhaust filter(Washable HEPA filter)**

- 1) This filter is reusable HEPA filter.
- 2) For clean air, this filter must be assembled.
- 3) Wash the exhaust filter with water once a year.
- 4) When the light of body is on, wash the exhaust filter with water.

**NOTE :** Reusing of the exhaust filter.

- Never wash the filter in a washing machine or in a dishwasher.
- Never use hot water for washing the filter.
- Reuse the filter after drying it completely in the shade for a half day.
- Do not dry near fire or direct sunray.
- Do not brush the filter. This will cause permanently damage allowing dust to by-pass the filter.
- Do not wash the blue side of the filter.

## **3. Avoid suction such materials as :**

- 1) Liquid or wet dust :  
Clogs the ventilation holes, reduces the suction power significantly and harms the motor.
- 2) Inflammable liquids such as benzene, alcohol or solvents.
- 3) Burning objects such as cigarette butts.
- 4) Bulky objects such as vinyl, paper etc.
- 5) Sharp objects such as needles, pins, metal, glass particles etc.

## **4. Attachments**

- Nozzle : for cleaning wooden floor, the room floor and carpet.
- Crevice Tool : for cleaning any crevice, inside corners or window frames. However, do not use the crevice tool more than 20 minutes because it may cause harm to the motor.
- Dusting brush : for cleaning clothes curtains.

## **5. Close supervision is necessary when this vacuum cleaner is used by or near children. Children's carelessness may cause damage to the cleaner or injure persons.**

## **6. Air exhausted from the vacuum cleaner is normally warm. But if extraordinarily hot air is exhausted, check if the telescopic tube, hose or clean filter is clogged or not.**

## **7. Electric shock could occur if used outdoors or on wet surfaces.**

# CAUTIONS

---

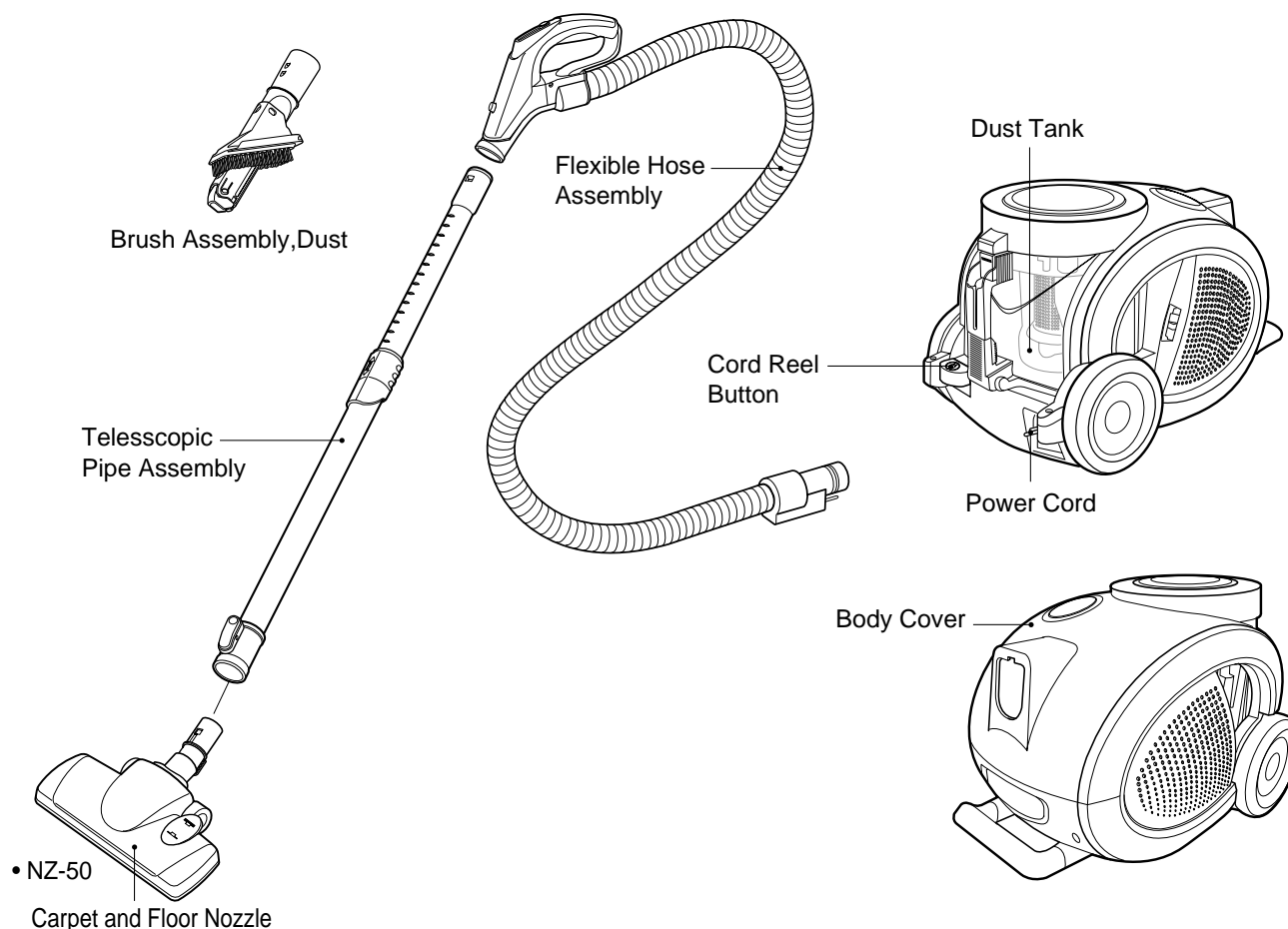
**BEFORE ATTEMPTING TO SERVICE OR ADJUST ANY PART OF THE VACUUM CLEANER, DISCONNECT THE ELECTRICAL POWER SUPPLY CORD FROM THE WALL OUTLET.**

## **1. Motor exchange**

- 1) Separate the Body Cover and Body Base by unfastening the screws.
- 2) After disconnecting the lead wires, replace the old motor with a new one.

## **2. In case of exchanging other parts. refer to the exploded view.**

# DESCRIPTION



# SPECIFICATIONS

- **MODEL** : REFER TO THE COVER PAGE
- **POWER SOURCE** : ON RATING PLATE
- **POWER CONSUMPTION** : ON RATING PLATE
- **POWER CONTROL** :
  - **MAIN** : SLIDE KNOB CONTROL (F/HOSE)
- **CORD LENGTH** : 10 m
- **HOSE LENGTH** : 1.5 m
- **NET WEIGHT** : 6.4 kg
- **PACKING WEIGHT** : 10 kg

- **NET DIMENSION** : 280 × 440 × 286 (W × D × H)mm
- **PACKING DIMENSION** : 330 × 615 × 330 (W × D × H)mm
- **ATTACHMENTS**

HOSE .....	1EA
TELESCOPIC PIPE ASSEMBLY .....	1EA
NOZZLE ASSEMBLY .....	1EA
BRUSH ASSEMBLY, DUST .....	1EA

• This specifications are subject to change according to the buyer's request.

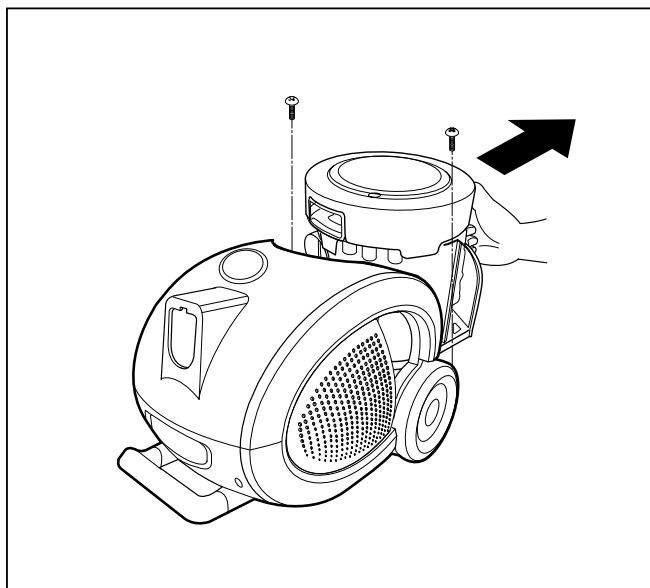
# DISASSEMBLY

**NOTE:** Before attempting to service or adjust any part of the vacuum cleaner, disconnect the electrical power supply cord from the wall outlet.

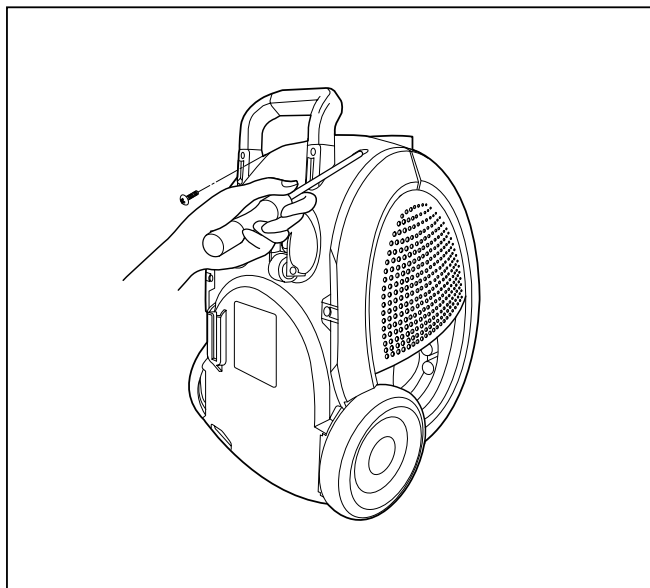
- Almost all of the parts of this vacuum cleaner can be disassembled with a screw driver and each connecting component easily fits each other. Disassemble one by one referring to the exploded view.
- If possible, don't disassemble except for the necessary parts. It is not necessary to disassemble the parts that are not detailed in the exploded view.

## 1. Body Cover Assembly Replacement

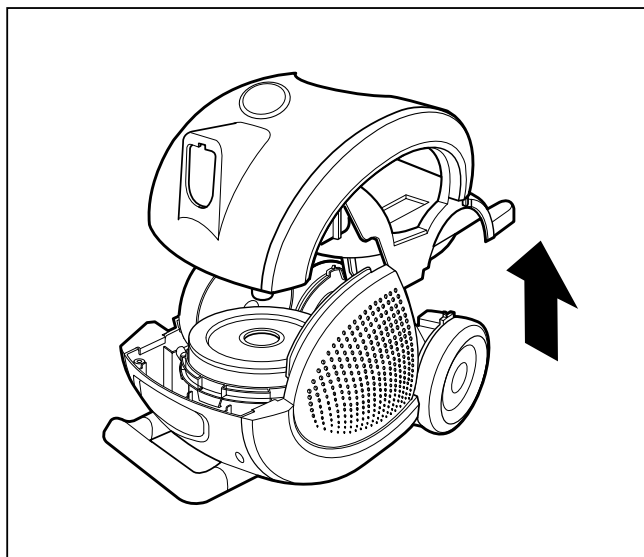
- 1) Remove the dust tank from the set.  
Remove the two screws fastening the sub cover.



- 2) Remove the four screws fastening the body base.

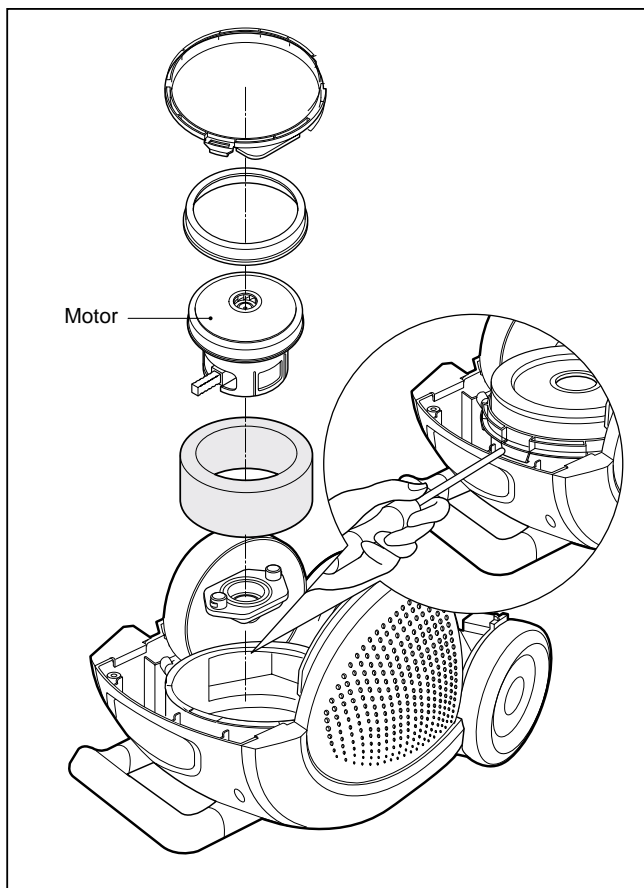


- 3) Disassemble the body cover, raising the body cover.



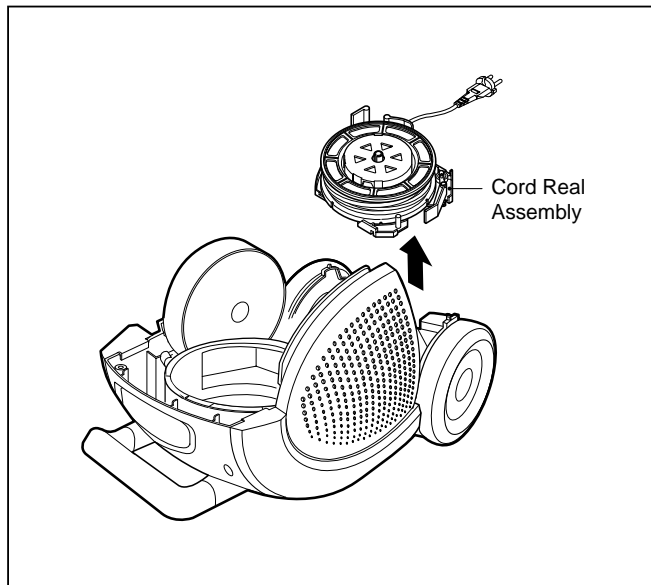
## 2. Motor Assembly Replacement

- 1) Unhook the four hook.
- 2) Pull out the motor and disconnect the lead wires from it.



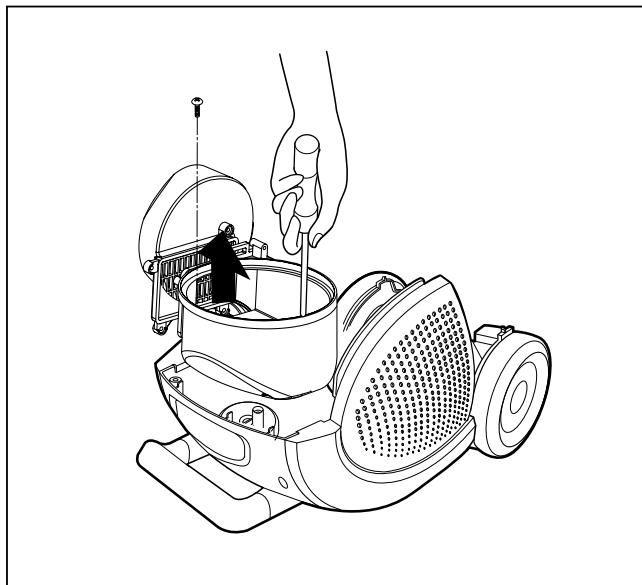
### 3. Cord Reel Assembly Replacement

1) Lift the cord reel assembly from body base.



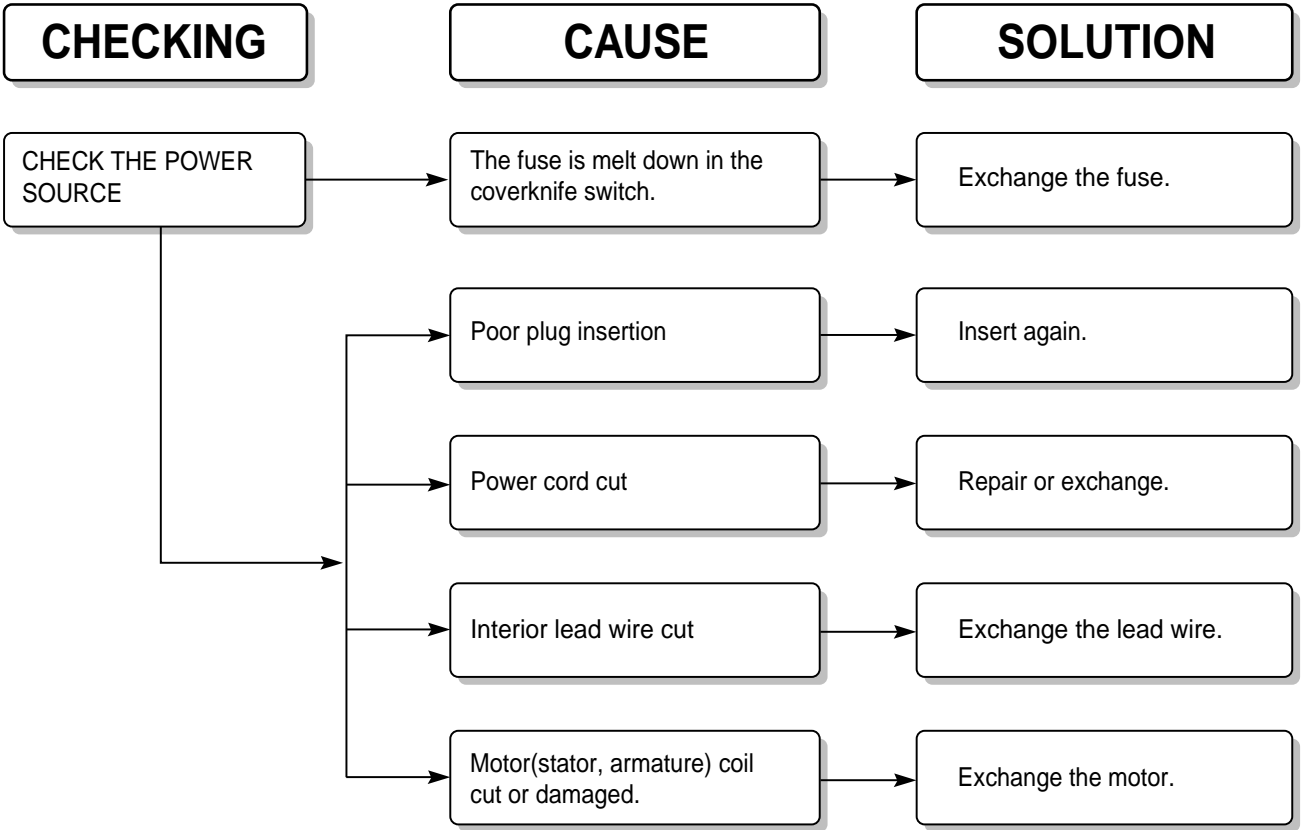
### 4. Disassembly of motor housing

1) Remove the two screws fastening the body base.

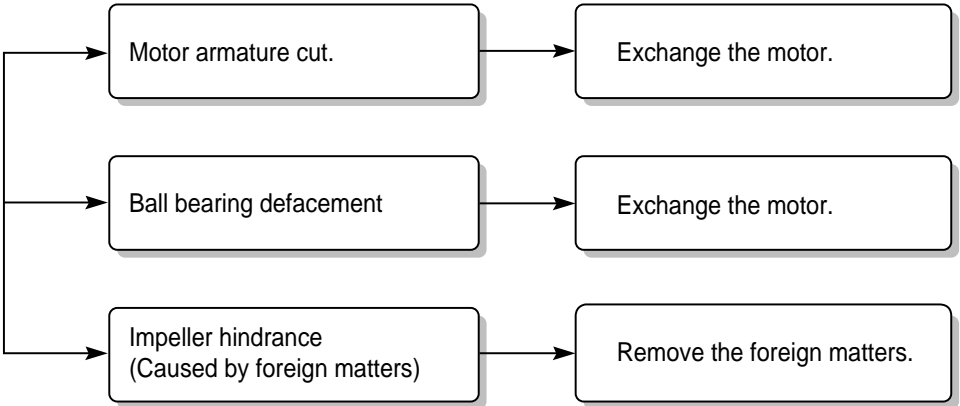


# TROUBLE SHOOTING GUIDE

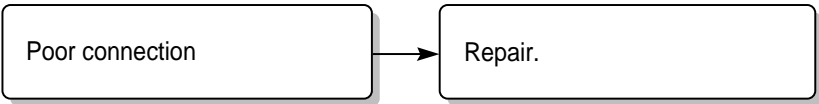
## 1. SWITCH ON BUT MOTOR DOSE NOT TURN.



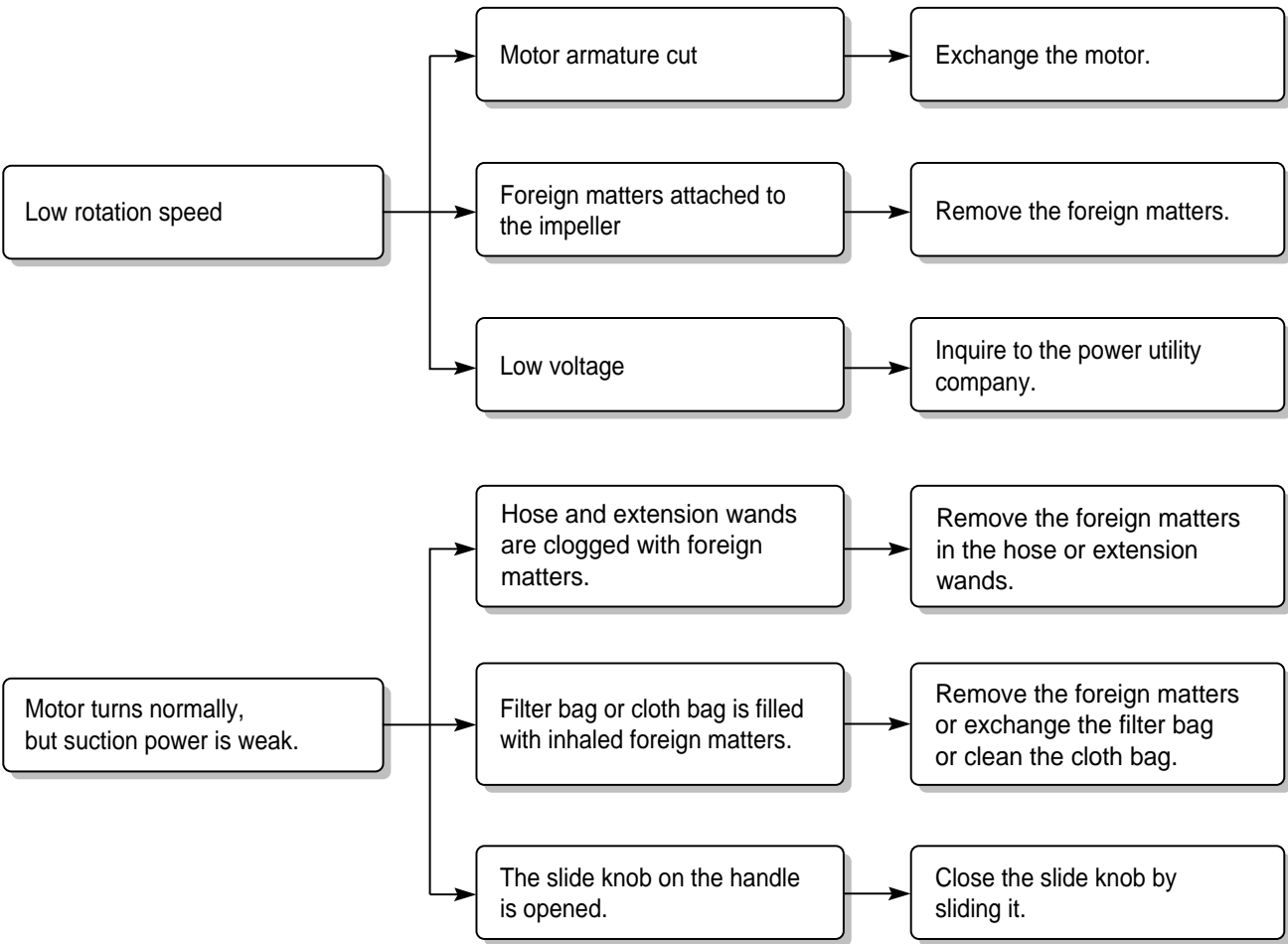
## 2. SWITCH ON, MOTOR DOES NOT TURN BUT BUZZES.



**3. SWITCH OFF BUT MOTOR TURNS**



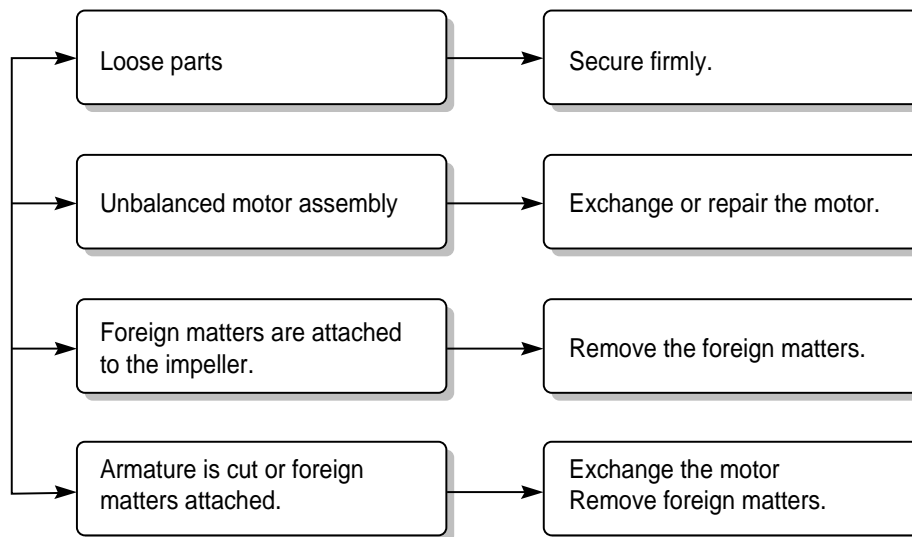
**4. WEAK SUCTION POWER**



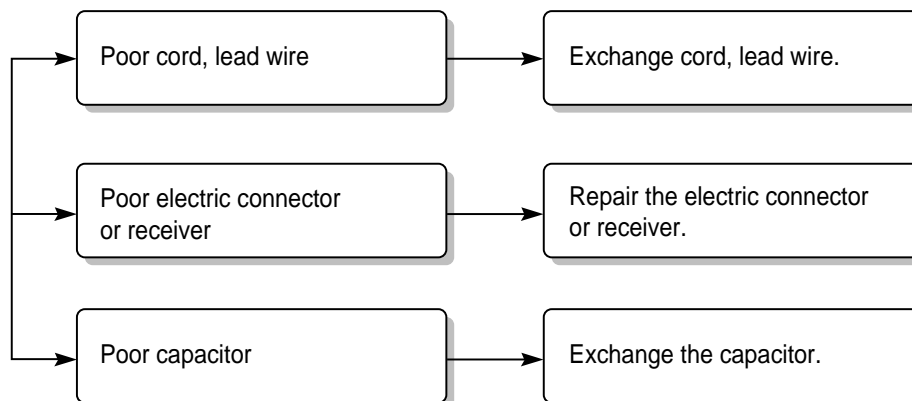


---

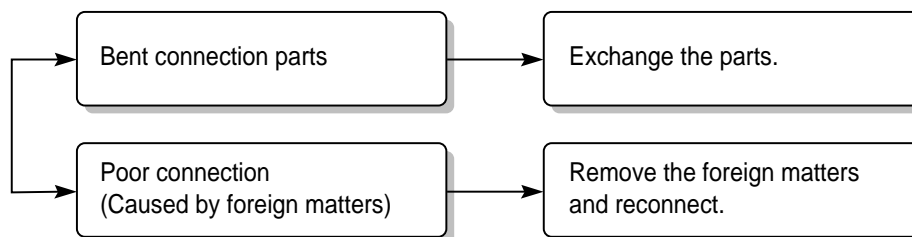
## 5. VIBRATION NOISES



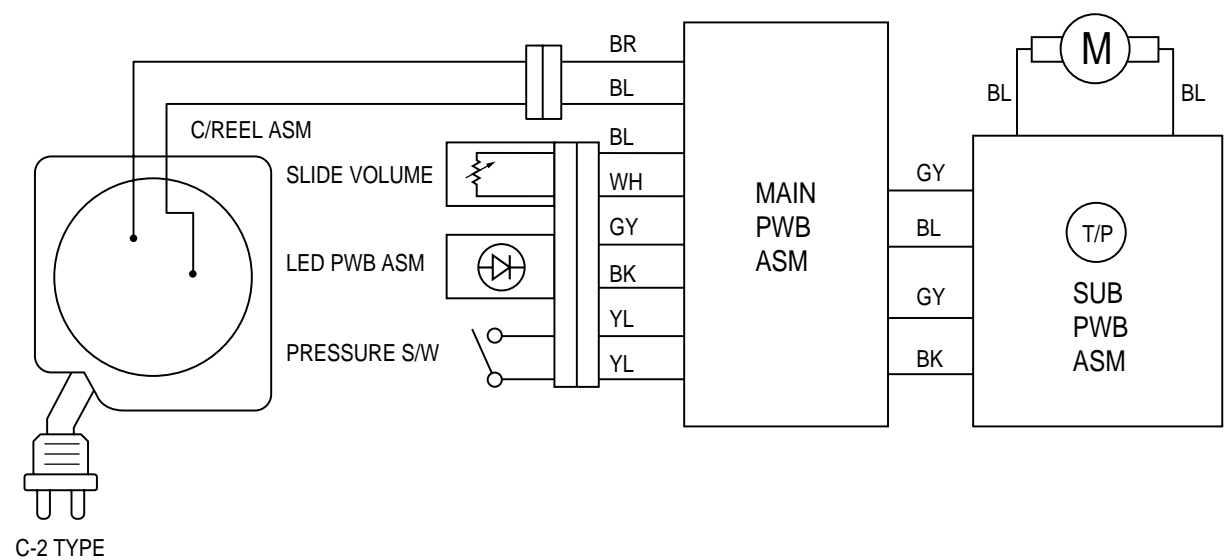
## 6. RADIO, TV RECEPTION DISTURBANCE



## 7. IMPROPER TUBE OF NOZZLE CONNECTION



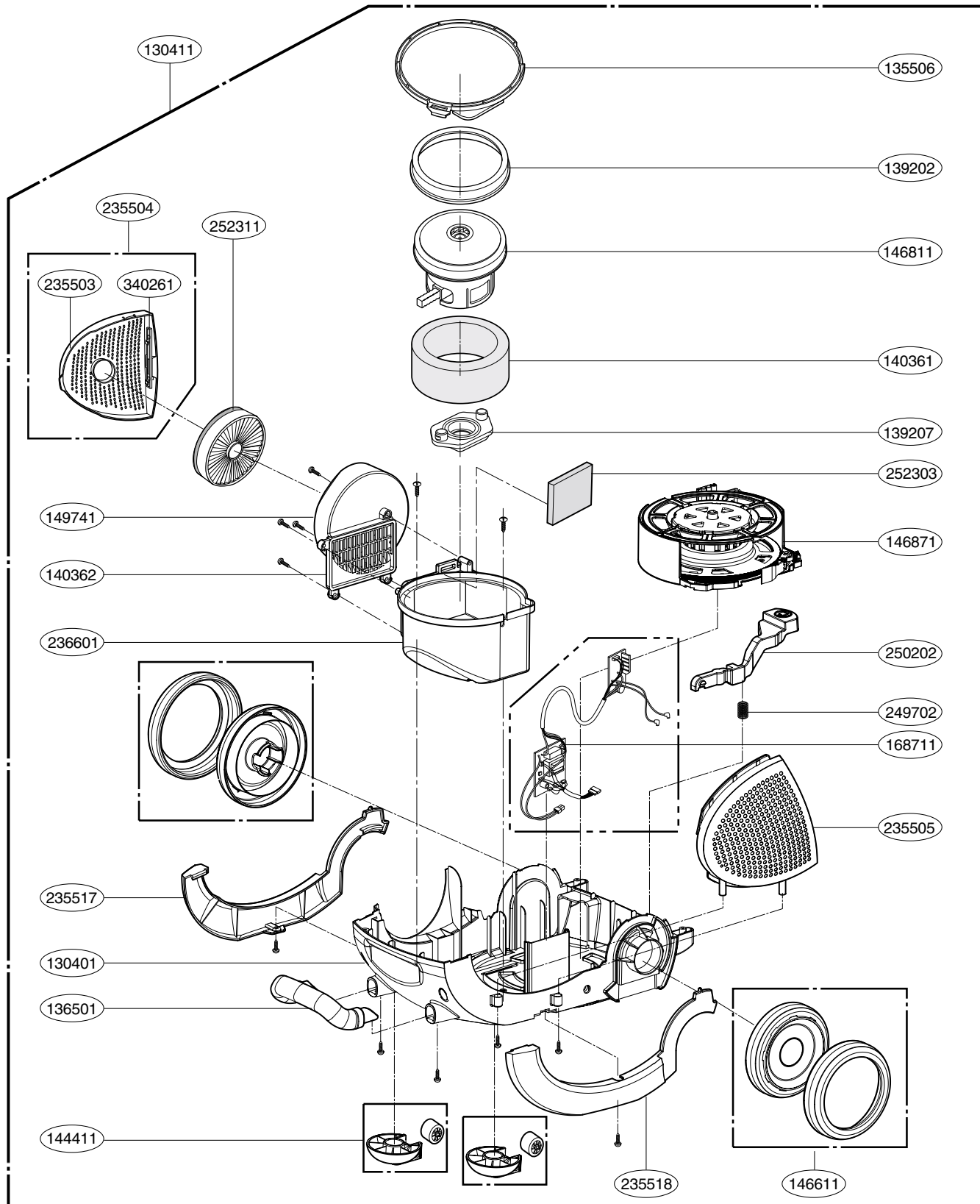
# SCHEMATIC DIAGRAM



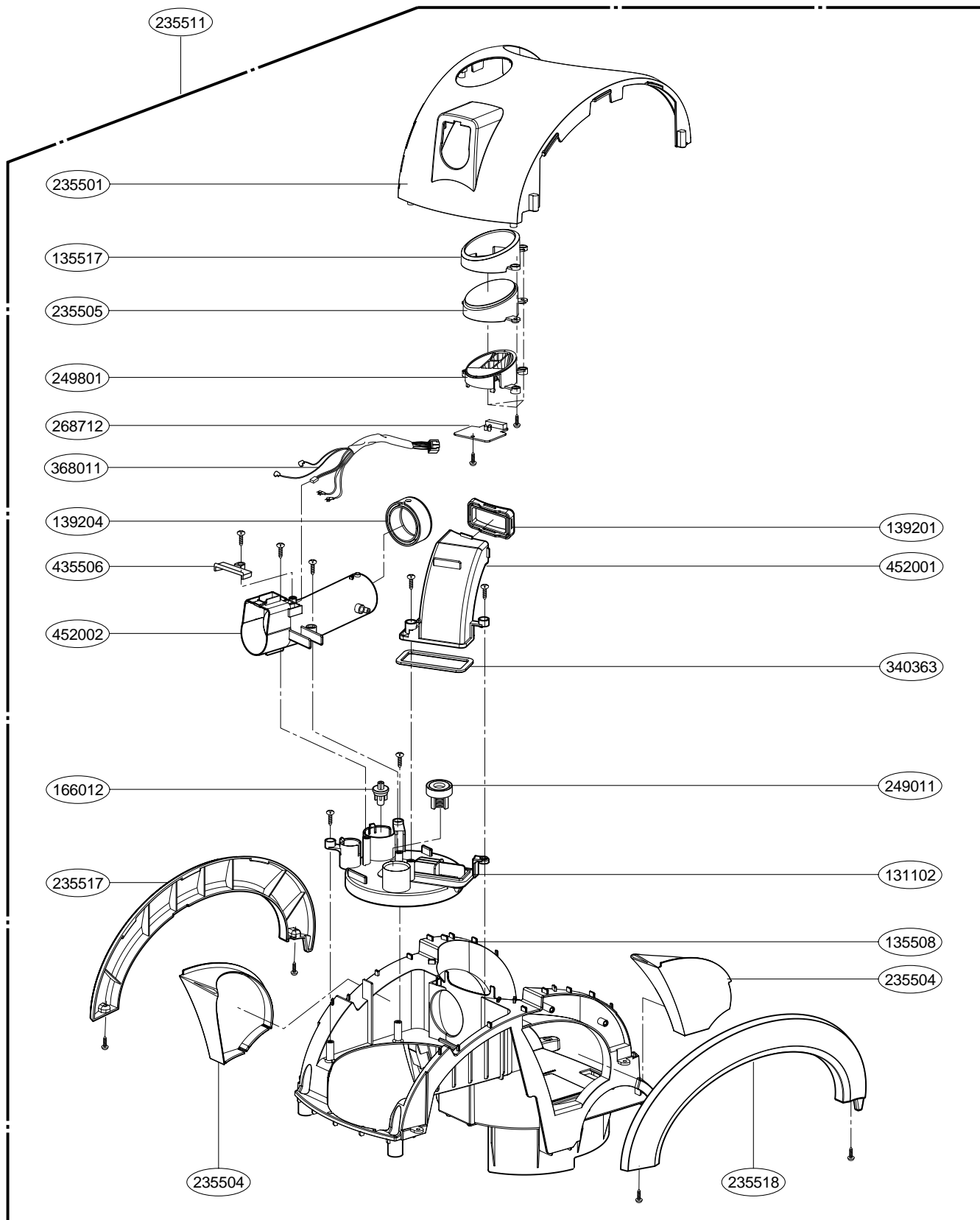


# EXPLODED VIEW

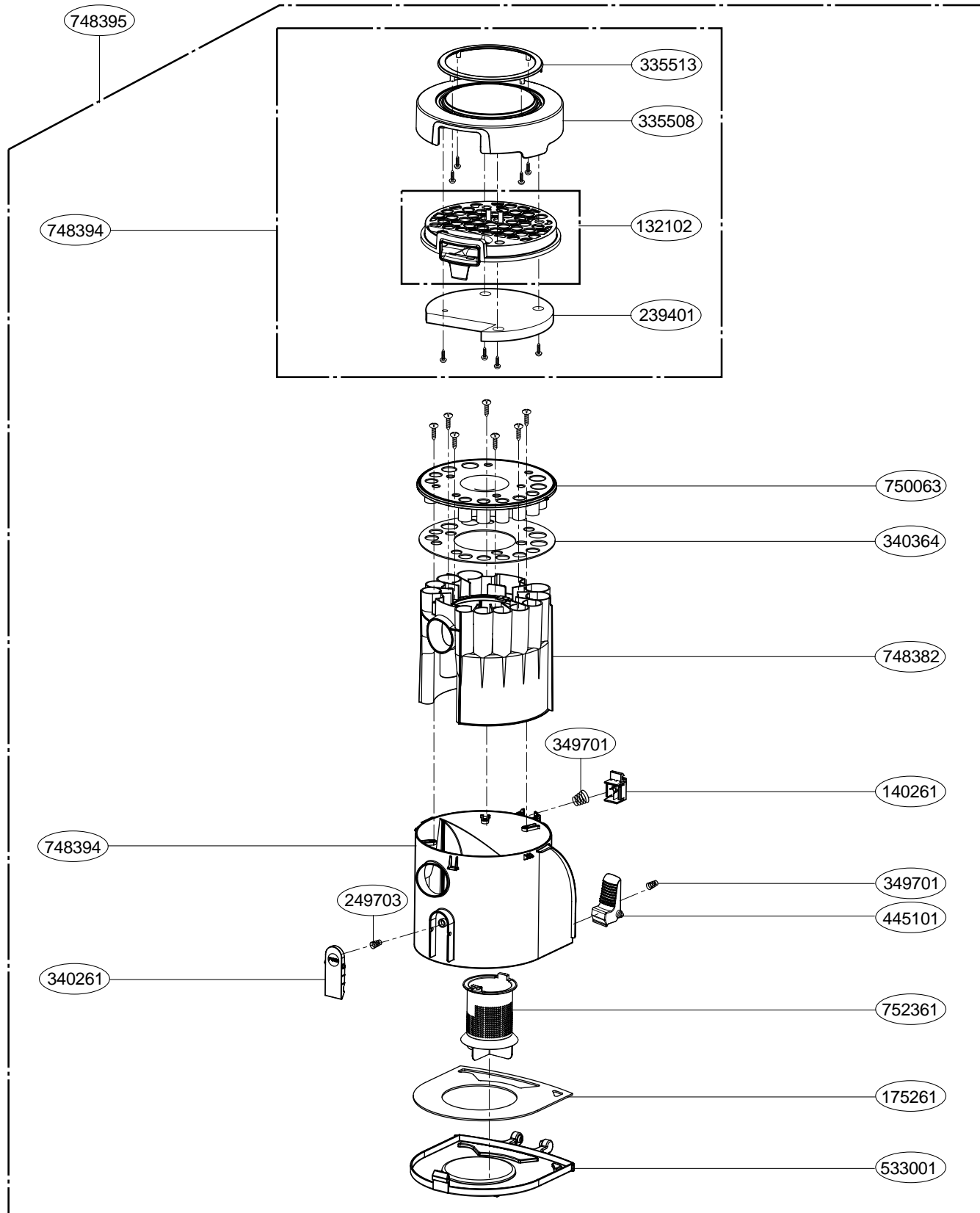
V-KC701HTR(V-KC701HTR.AXRQGSF)  
COVER ASS'Y, BODY

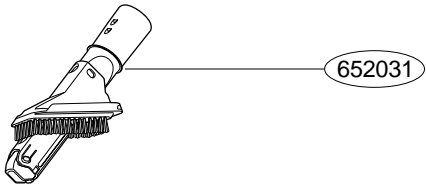
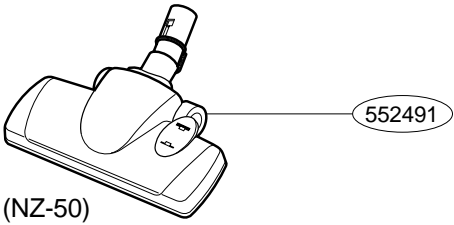
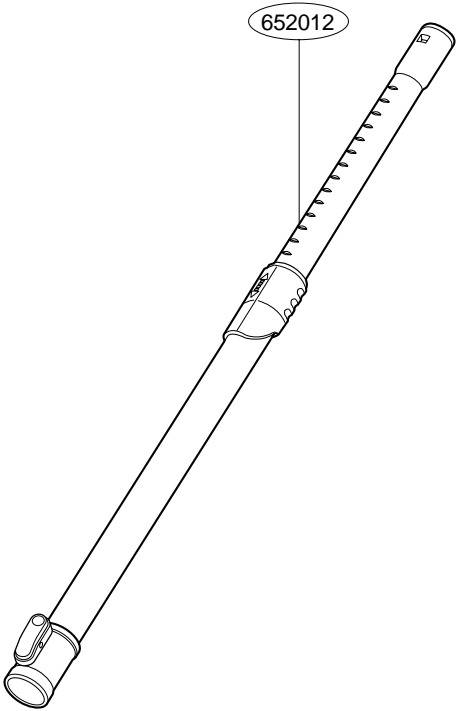
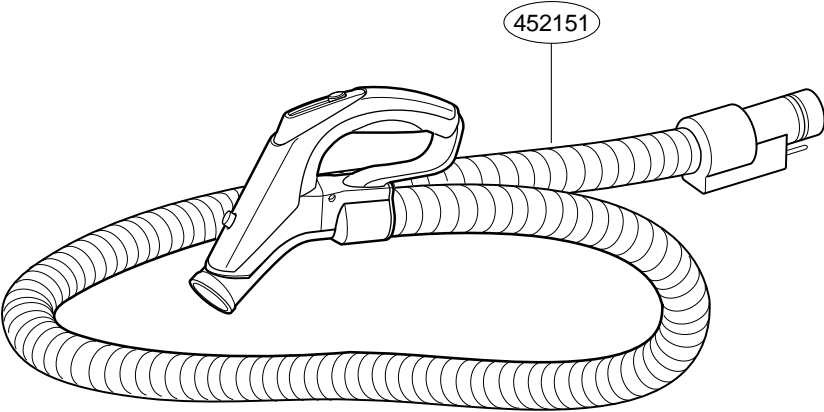


## BASE ASS'Y, BODY



## TANK ASS'Y, DUST





# REPLACEMENT PARTS LIST

LOC. NO.	PART NO.	DESCRIPTION	SVC	REMARK
146811	4681FI2467D	AC Motor	R	
139202	MCQ30443201	Damper,Motor Mount	R	
135506	3550FI2670A	Cover,Housing	R	
139207	MDS32309801	Gasket,Sealing	R	
152302	3920FI3791B	Damper,Absorbing	R	
130411	3041FI1598H	Base Assembly,Body	R	
130401	3040FI1567A	Base,Body	R	
144411	4441FI3621A	Roller Assembly	R	
146611	4661FI2424E	Wheel Assembly	R	
236601	3660FI1258A	Housing,Motor	R	
149741	4974FI1017A	Guide,Exhaust	R	
250202	5020FI3845A	Button,Cord Reel	R	
235517	3550FI2668B	Cover,Decor	R	
235518	3550FI2669B	Cover,Decor	R	
136501	3650FI2437A	Handle,Carrier	R	
235505	3550FI2667A	Cover,Exhaust Filter	R	
252303	5230FI3797C	Filter,Exhaust	R	
140362	4036FI3677G	Gasket	R	
249702	4970FI4694F	Spring,Coil	R	
146871	4687FI1501C	Reel Assembly	R	
168711	6871FX2216L	PCB Assembly,Main	R	
235511	3551FI1766H	Cover Assembly,Body	R	
135508	3550FI1937A	Cover,Body	R	
235501	3550FI1938F	Cover,Top	R	
452002	5200FI1241B	Pipe,Connector	R	
452001	5200FI1240A	Pipe,Bending	R	
131102	4974FI2414A	Guide,Air	R	
235517	3550FI2671B	Cover,Decor	R	
235518	3550FI2672B	Cover,Decor	R	
235505	3550FI3962A	Cover,Display	R	
249801	4980FI3806A	Holder,LED	R	
135517	3550FI3963B	Cover,Decor	R	
435506	3550FI3802D	Cover,Terminal	R	
268712	6871FX2237B	PCB Assembly,Display	R	
249011	4901FI2001Y	Damper Assembly	R	
166012	6601FI3501C	Switch,Pressure	R	
139204	3920FI3963A	Gasket,Terminal	R	
139201	3920FI3964A	Gasket,Sealing	R	
368011	6631FI3155E	Wire,Jump	R	
340363	403683I002A	Gasket	R	
235504	MCK30372801	Cover,Rear	R	



LOC. NO.	PART NO.	DESCRIPTION	SVC	REMARK
235504	MCK30372401	Cover,Rear	R	
748395	4839FI1053M	Tank Assembly,Dust	R	
748394	4838FI1432A	Tank,Dust	R	
748382	4838FI1431A	Tank	R	
335508	3550FI1939A	Cover,Dust	R	
533001	3300FI1479A	Plate,Bottom	R	
750063	MBL32968001	Cap,Dust	R	
132102	3211FI1005B	Frame Assembly,Filter	R	
752361	4814FI2004A	Strainer,Inner	R	
335513	3550FI2673B	Cover,Decor	R	
140261	4026FI3723A	Locker	R	
340261	4026FI3724A	Locker	R	
445101	4026FI3725A	Locker	R	
349701	4970FI3217J	Spring,Coil	R	
249703	4970FI3217C	Spring,Coil	R	
239401	3920FI3966A	Damper,Absorbing	R	
175261	4036FI3751A	Gasket	R	
340364	MDS34651001	Gasket	R	
349701	4970FI3211A	Spring	R	
235504	3551FI2451A	Cover Assembly,Exhaust	R	
235503	3550FI2674A	Cover,Exhaust Filter	R	
340261	4026FI3726A	Locker	R	
252311	5231FI2472D	Filter Assembly,Exhaust	R	
652012	5201FI2508J	Pipe Assembly,Telescopic	R	
452151	5215FI1364Q	Hose Assembly,Flexible	R	
552491	5249FI1445K	Nozzle Assembly,Floor	R	
652031	5203FI1216C	Brush Assembly	R	
638901	MAY34246901	Box,Color	R	

R: SERVICE PARTS

# MEMO

---

# MEMO

---

